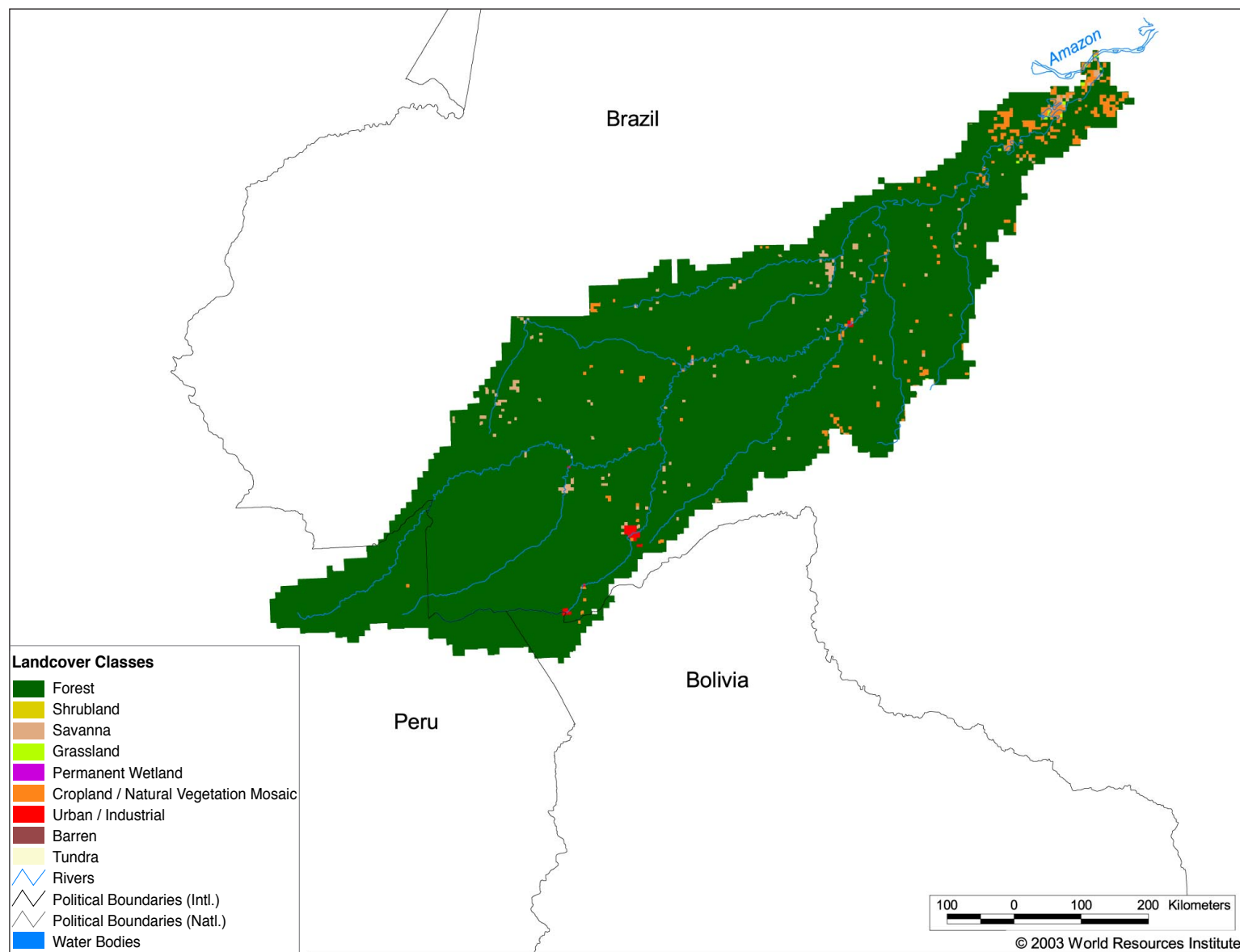


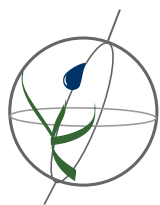
# Watersheds of South America

## SA01 Amazon I Purus



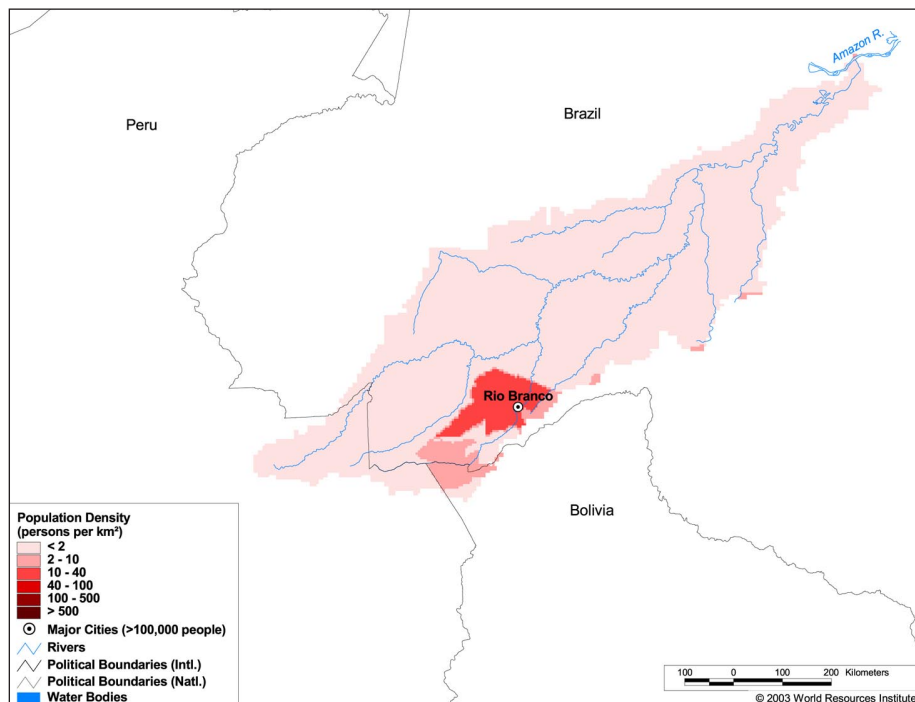
### Land Cover and Use Variables

Percent Forest Cover:	91.0
Percent Grassland, Savanna and Shrubland:	3.9
Percent Wetlands:	7.0
Percent Cropland:	3.9
Percent Irrigated Cropland:	0.0
Percent Dryland Area:	-
Percent Urban and Industrial Area:	0.1
Percent Loss of Original Forest Cover:	6.7



### Basin Indicators

Basin Area (sq. km):	371,042
Average Population Density (people per sq. km):	1
Number of Large Cities (>100,000 people):	1
Water Supply per Person (1995)(m <sup>3</sup> /year):	>10,000
Degree of River Fragmentation:	-
Number of Dams (>15m high) in Basin:	0
Number of Dams (>150m high) in Basin:	0
Number of Dams (>60m high) under Construction:	0
Number of Dams (>15m high) on Main Stem of River:	0
Number of Dams (>150m high) on Main Stem of River:	0



### Biodiversity Information and Indicators

Number of Fish Species:	-
Number of Fish Endemics:	-
Number of Amphibian Species:	-
Number of Ramsar Sites:	0
Number of Wetland-Dependent IBAs:	-
Number of Endemic Bird Areas:	2
Percent Protected Area:	2.6

