

Land Cover and Use Variables

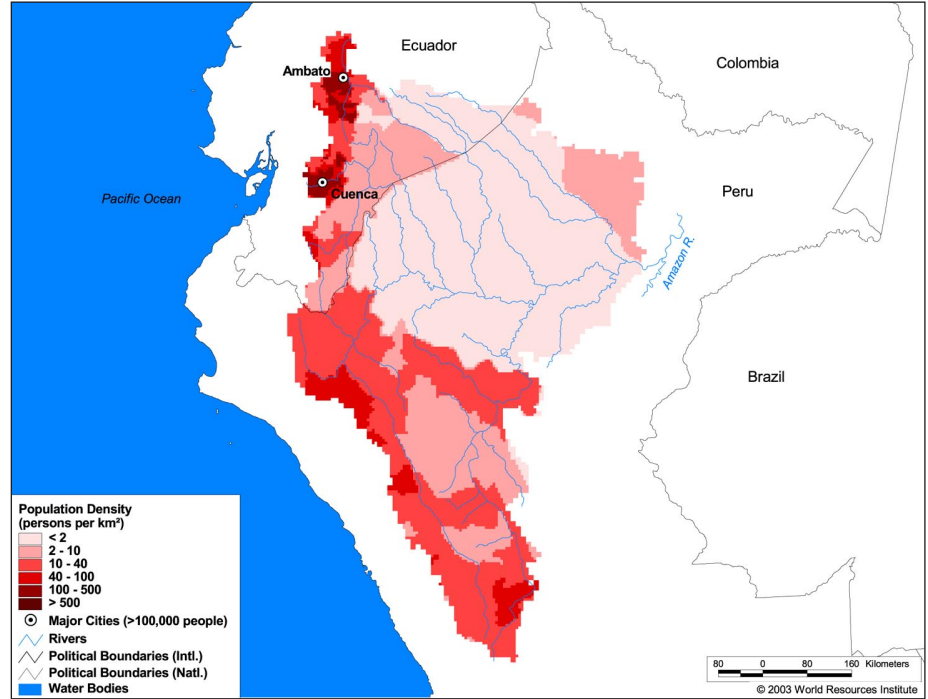
Percent Forest Cover:	61.3
Percent Grassland, Savanna and Shrubland:	12.8
Percent Wetlands:	21.1
Percent Cropland:	19.1
Percent Irrigated Cropland:	0.8
Percent Dryland Area:	-
Percent Urban and Industrial Area:	1.3
Percent Loss of Original Forest Cover:	17.0



Watersheds of South America SA01 Amazon I Marañón

Basin Indicators

Basin Area (sq. km):	382,877
Average Population Density (people per sq. km):	12
Number of Large Cities (>100,000 people):	2
Water Supply per Person (1995)(m ³ /year):	>10,000
Degree of River Fragmentation:	-
Number of Dams (>15m high) in Basin:	2
Number of Dams (>150m high) in Basin:	1
Number of Dams (>60m high) under Construction:	0
Number of Dams (>15m high) on Main Stem of River:	0
Number of Dams (>150m high) on Main Stem of River:	0



Biodiversity Information and Indicators

Number of Fish Species:	-
Number of Fish Endemics:	-
Number of Amphibian Species:	-
Number of Ramsar Sites:	1
Number of Wetland-Dependent IBAs:	-
Number of Endemic Bird Areas:	12
Percent Protected Area:	3.4

