

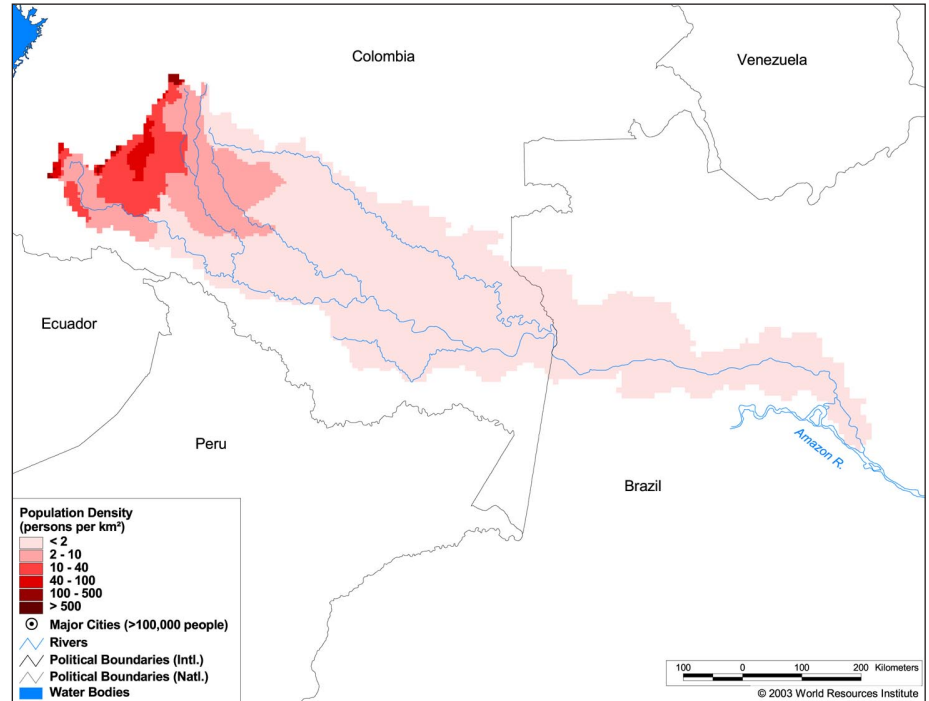
### Land Cover and Use Variables

Percent Forest Cover:	85.1
Percent Grassland, Savanna and Shrubland:	4.2
Percent Wetlands:	6.0
Percent Cropland:	8.3
Percent Irrigated Cropland:	0.2
Percent Dryland Area:	-
Percent Urban and Industrial Area:	0.2
Percent Loss of Original Forest Cover:	17.1



## Basin Indicators

Basin Area (sq. km):	255,709
Average Population Density (people per sq. km):	3
Number of Large Cities (>100,000 people):	1
Water Supply per Person (1995)(m <sup>3</sup> /year):	>10,000
Degree of River Fragmentation:	-
Number of Dams (>15m high) in Basin:	0
Number of Dams (>150m high) in Basin:	0
Number of Dams (>60m high) under Construction:	0
Number of Dams (>15m high) on Main Stem of River:	0
Number of Dams (>150m high) on Main Stem of River:	0



## Biodiversity Information and Indicators

Number of Fish Species:	-
Number of Fish Endemics:	-
Number of Amphibian Species:	-
Number of Ramsar Sites:	1
Number of Wetland-Dependent IBAs:	-
Number of Endemic Bird Areas:	5
Percent Protected Area:	11.1

