

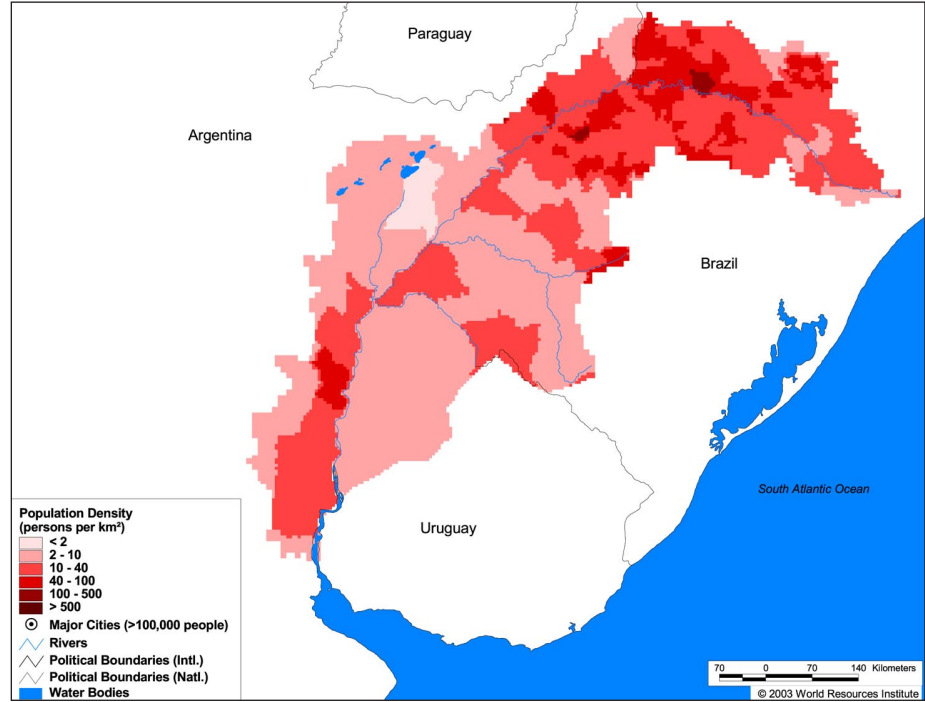
Land Cover and Use Variables

Percent Forest Cover:	7.2
Percent Grassland, Savanna and Shrubland:	44.4
Percent Wetlands:	3.9
Percent Cropland:	43.7
Percent Irrigated Cropland:	0.3
Percent Dryland Area:	0.0
Percent Urban and Industrial Area:	3.5
Percent Loss of Original Forest Cover:	92.4



Basin Indicators

Basin Area (sq. km):	297,211
Average Population Density (people per sq. km):	17
Number of Large Cities (>100,000 people):	0
Water Supply per Person (1995)(m ³ /year):	32,731
Degree of River Fragmentation:	High
Number of Dams (>15m high) in Basin:	9
Number of Dams (>150m high) in Basin:	0
Number of Dams (>60m high) under Construction:	1
Number of Dams (>15m high) on Main Stem of River:	4
Number of Dams (>150m high) on Main Stem of River:	0



Biodiversity Information and Indicators

Number of Fish Species:	160
Number of Fish Endemics:	35
Number of Amphibian Species:	-
Number of Ramsar Sites:	1
Number of Wetland-Dependent IBAs:	-
Number of Endemic Bird Areas:	3
Percent Protected Area:	1.5

