

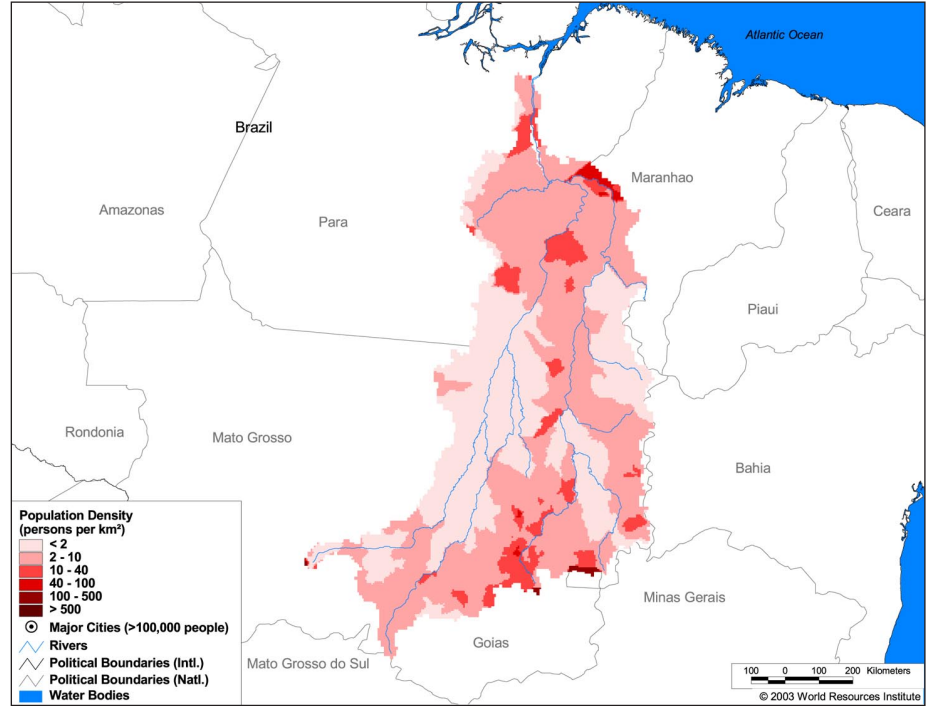
Land Cover and Use Variables

Percent Forest Cover:	9.9
Percent Grassland, Savanna and Shrubland:	26.2
Percent Wetlands:	19.1
Percent Cropland:	61.5
Percent Irrigated Cropland:	0.0
Percent Dryland Area:	0.0
Percent Urban and Industrial Area:	1.3
Percent Loss of Original Forest Cover:	49.7



Basin Indicators

Basin Area (sq. km):	764,213
Average Population Density (people per sq. km):	5
Number of Large Cities (>100,000 people):	0
Water Supply per Person (1995)(m ³ /year):	103,383
Degree of River Fragmentation:	Medium
Number of Dams (>15m high) in Basin:	4
Number of Dams (>150m high) in Basin:	1
Number of Dams (>60m high) under Construction:	1
Number of Dams (>15m high) on Main Stem of River:	2
Number of Dams (>150m high) on Main Stem of River:	1



Biodiversity Information and Indicators

Number of Fish Species:	-
Number of Fish Endemics:	-
Number of Amphibian Species:	-
Number of Ramsar Sites:	1
Number of Wetland-Dependent IBAs:	-
Number of Endemic Bird Areas:	1
Percent Protected Area:	1.3

