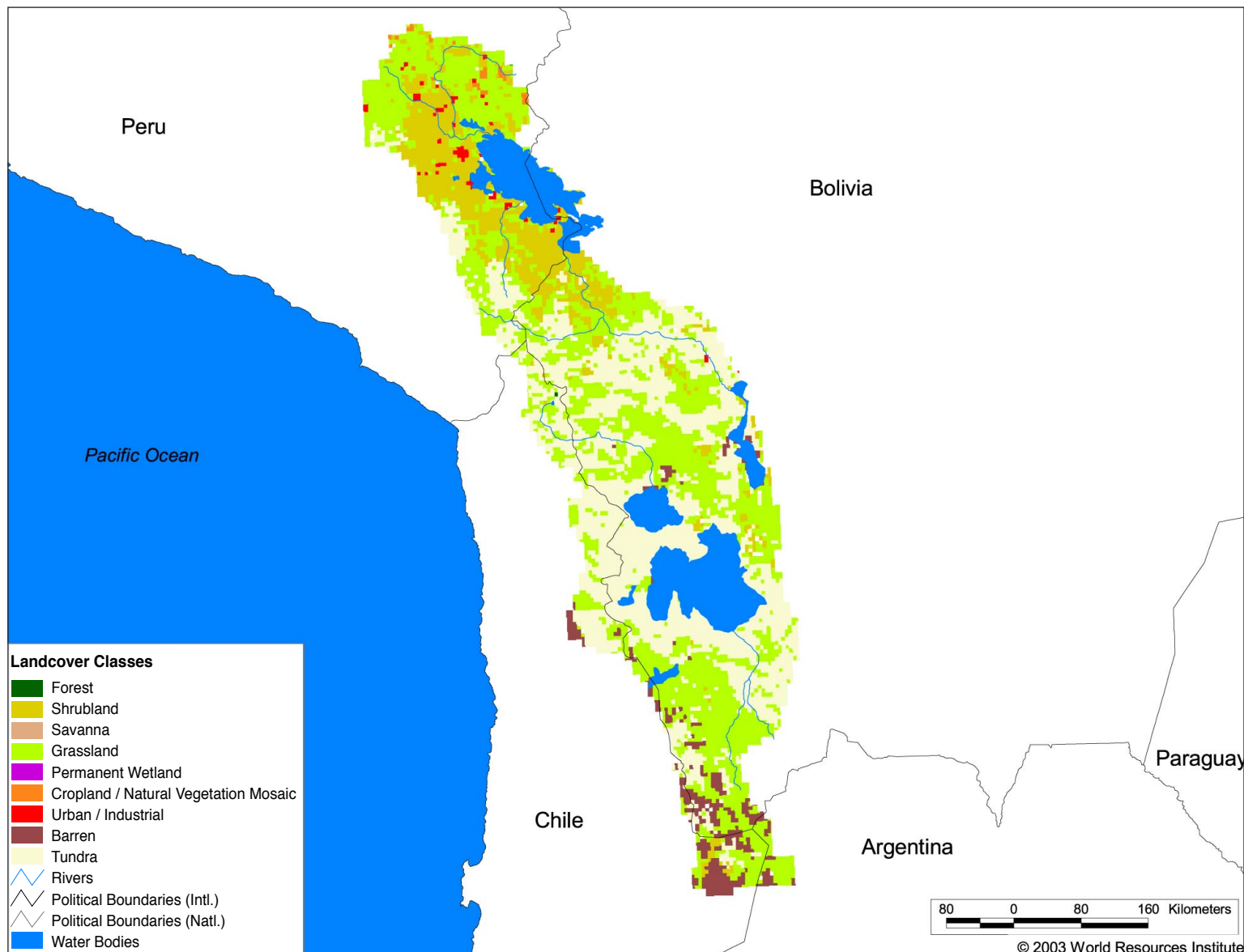
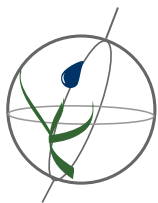


# Watersheds of South America SA09 Lake Titicaca & Salar de Uyuni



## Land Cover and Use Variables

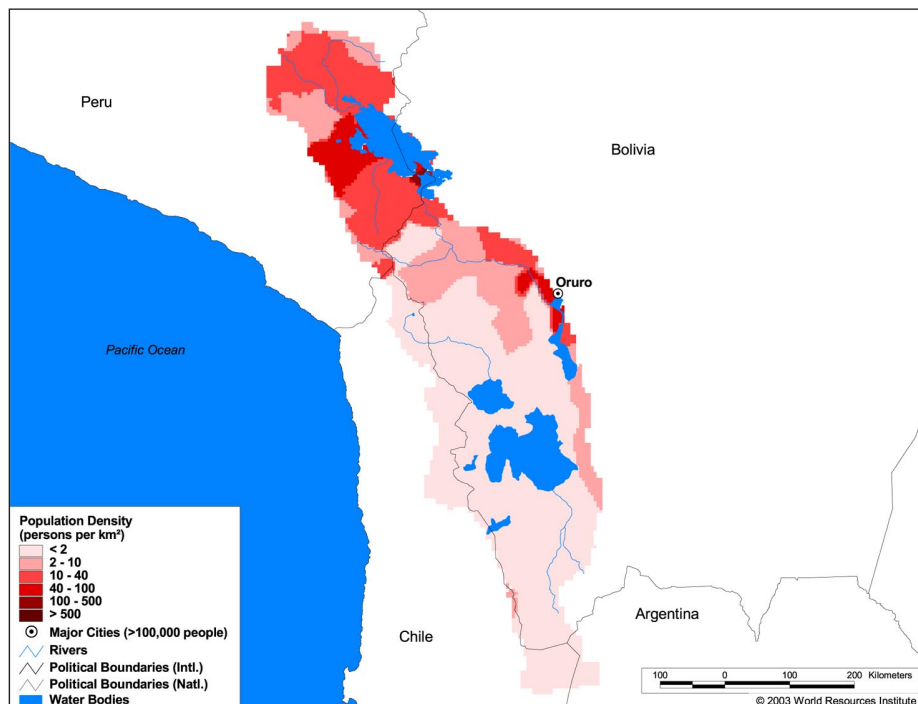
Percent Forest Cover:	0.1
Percent Grassland, Savanna and Shrubland:	89.4
Percent Wetlands:	0.0
Percent Cropland:	0.6
Percent Irrigated Cropland:	0.4
Percent Dryland Area:	72.0
Percent Urban and Industrial Area:	0.9
Percent Loss of Original Forest Cover:	99.9



# Watersheds of South America SA09 Lake Titicaca & Salar de Uyuni

## Basin Indicators

Basin Area (sq. km):	193,090
Average Population Density (people per sq. km):	8
Number of Large Cities (>100,000 people):	1
Water Supply per Person (1995)(m <sup>3</sup> /year):	15,980
Degree of River Fragmentation:	-
Number of Dams (>15m high) in Basin:	0
Number of Dams (>150m high) in Basin:	0
Number of Dams (>60m high) under Construction:	0
Number of Dams (>15m high) on Main Stem of River:	0
Number of Dams (>150m high) on Main Stem of River:	0



## Biodiversity Information and Indicators

Number of Fish Species:	20
Number of Fish Endemics:	14
Number of Amphibian Species:	-
Number of Ramsar Sites:	6
Number of Wetland-Dependent IBAs:	-
Number of Endemic Bird Areas:	2
Percent Protected Area:	10.4

