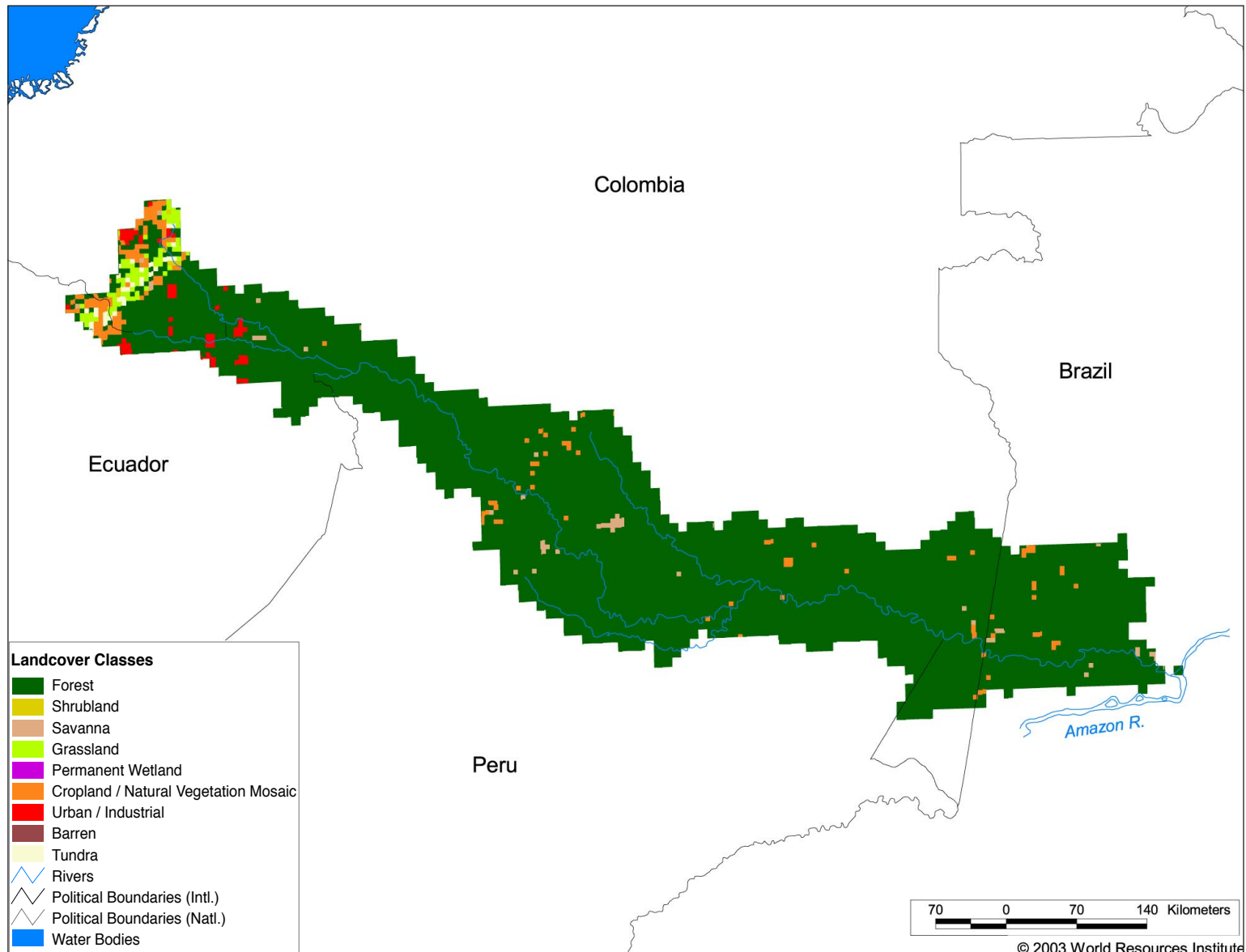




Watersheds of South America SA01 Amazon I Ica-Putumayo



Land Cover and Use Variables

Percent Forest Cover:	87.0
Percent Grassland, Savanna and Shrubland:	4.0
Percent Wetlands:	10.0
Percent Cropland:	5.7
Percent Irrigated Cropland:	0.3
Percent Dryland Area:	-
Percent Urban and Industrial Area:	0.9
Percent Loss of Original Forest Cover:	6.8

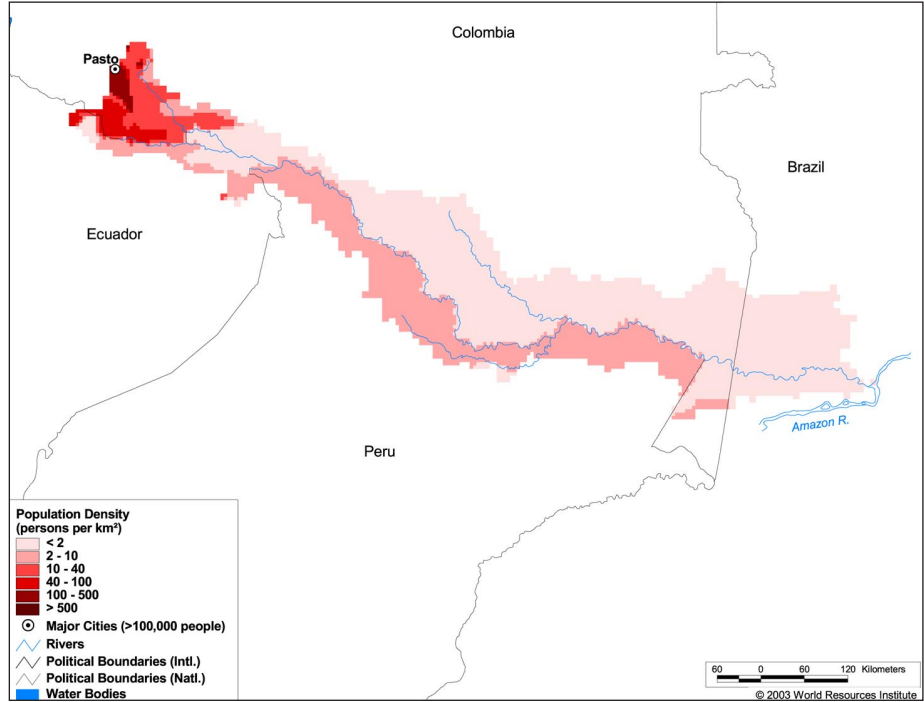


Watersheds of South America

SA01 Amazon I Ica-Putumayo

Basin Indicators

Basin Area (sq. km):	139,300
Average Population Density (people per sq. km):	6
Number of Large Cities (>100,000 people):	1
Water Supply per Person (1995)(m ³ /year):	>10,000
Degree of River Fragmentation:	-
Number of Dams (>15m high) in Basin:	0
Number of Dams (>150m high) in Basin:	0
Number of Dams (>60m high) under Construction:	0
Number of Dams (>15m high) on Main Stem of River:	0
Number of Dams (>150m high) on Main Stem of River:	0



Biodiversity Information and Indicators

Number of Fish Species:	-
Number of Fish Endemics:	-
Number of Amphibian Species:	-
Number of Ramsar Sites:	1
Number of Wetland-Dependent IBAs:	-
Number of Endemic Bird Areas:	5
Percent Protected Area:	3.0

