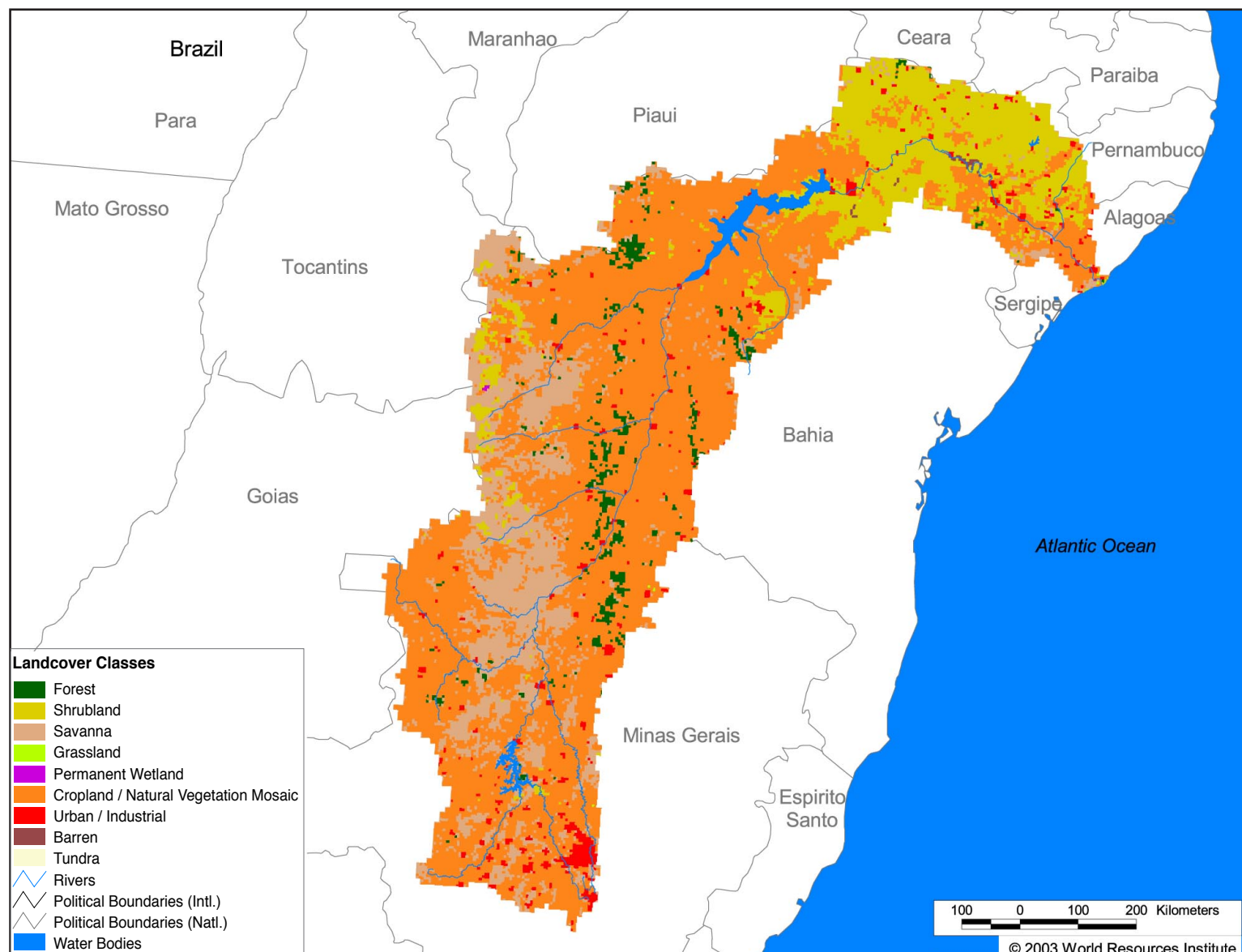


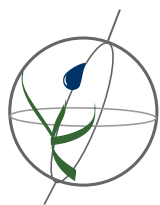
# Watersheds of South America

## SA08 São Francisco



### Land Cover and Use Variables

Percent Forest Cover:	3.1
Percent Grassland, Savanna and Shrubland:	31.8
Percent Wetlands:	9.7
Percent Cropland:	60.2
Percent Irrigated Cropland:	0.3
Percent Dryland Area:	46.3
Percent Urban and Industrial Area:	2.8
Percent Loss of Original Forest Cover:	64.4

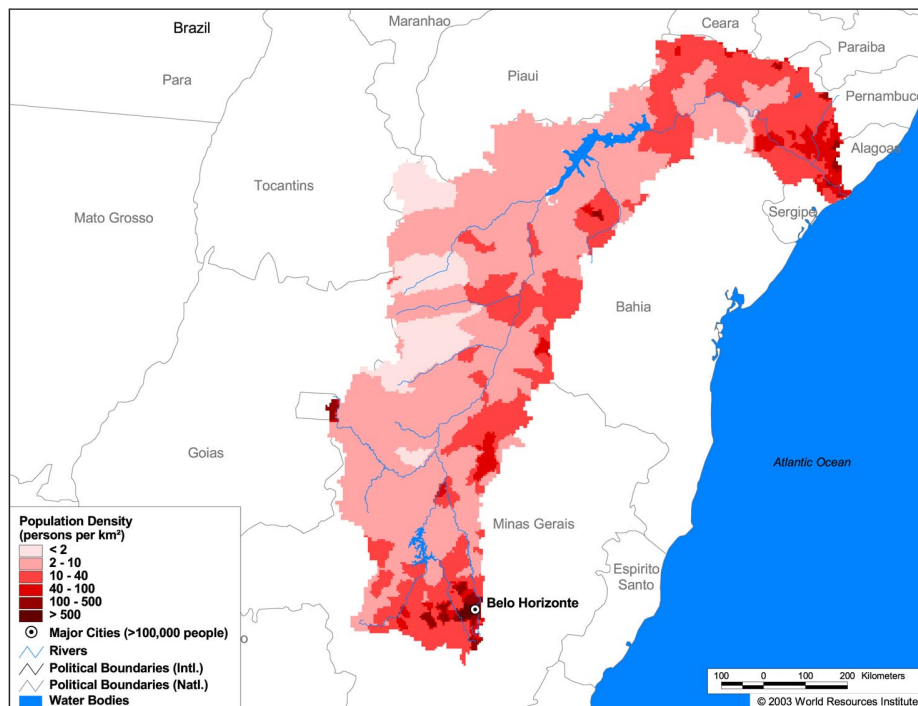


# Watersheds of South America

## SA08 São Francisco

### Basin Indicators

Basin Area (sq. km):	617,814
Average Population Density (people per sq. km):	18
Number of Large Cities (>100,000 people):	1
Water Supply per Person (1995)(m <sup>3</sup> /year):	8,261
Degree of River Fragmentation:	High
Number of Dams (>15m high) in Basin:	26
Number of Dams (>150m high) in Basin:	1
Number of Dams (>60m high) under Construction:	3
Number of Dams (>15m high) on Main Stem of River:	16
Number of Dams (>150m high) on Main Stem of River:	1



### Biodiversity Information and Indicators

Number of Fish Species:	-
Number of Fish Endemics:	-
Number of Amphibian Species:	-
Number of Ramsar Sites:	0
Number of Wetland-Dependent IBAs:	-
Number of Endemic Bird Areas:	3
Percent Protected Area:	0.5

