

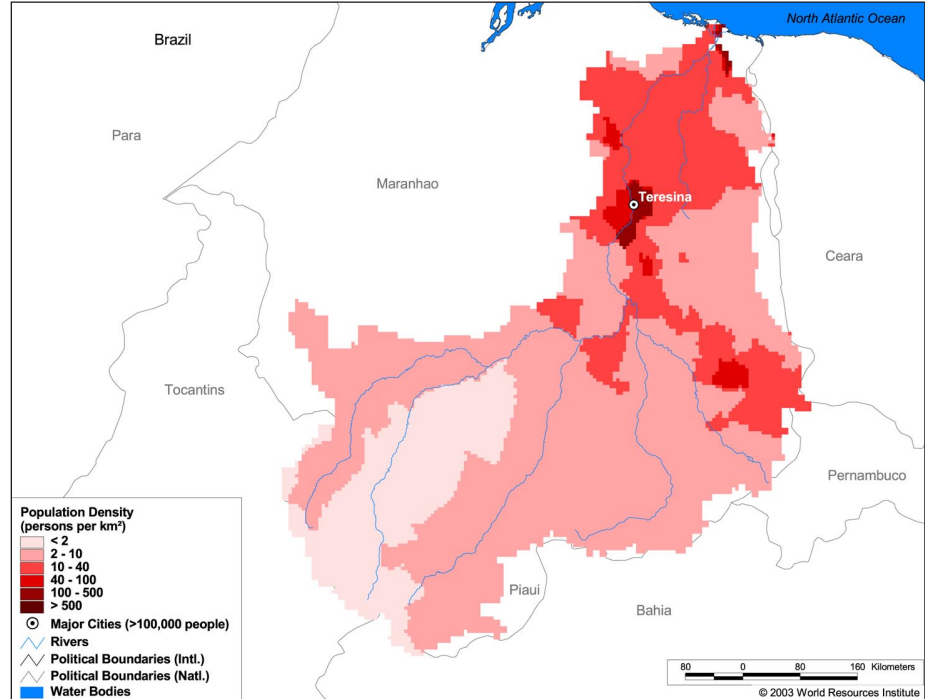
Land Cover and Use Variables

Percent Forest Cover:	5.8
Percent Grassland, Savanna and Shrubland:	47.4
Percent Wetlands:	18.8
Percent Cropland:	44.8
Percent Irrigated Cropland:	0.1
Percent Dryland Area:	57.7
Percent Urban and Industrial Area:	1.8
Percent Loss of Original Forest Cover:	26.8



Basin Indicators

Basin Area (sq. km):	322,887
Average Population Density (people per sq. km):	10
Number of Large Cities (>100,000 people):	1
Water Supply per Person (1995)(m ³ /year):	7,729
Degree of River Fragmentation:	Medium
Number of Dams (>15m high) in Basin:	13
Number of Dams (>150m high) in Basin:	0
Number of Dams (>60m high) under Construction:	1
Number of Dams (>15m high) on Main Stem of River:	8
Number of Dams (>150m high) on Main Stem of River:	0



Biodiversity Information and Indicators

Number of Fish Species:	90
Number of Fish Endemics:	-
Number of Amphibian Species:	-
Number of Ramsar Sites:	0
Number of Wetland-Dependent IBAs:	-
Number of Endemic Bird Areas:	1
Percent Protected Area:	0.7

