

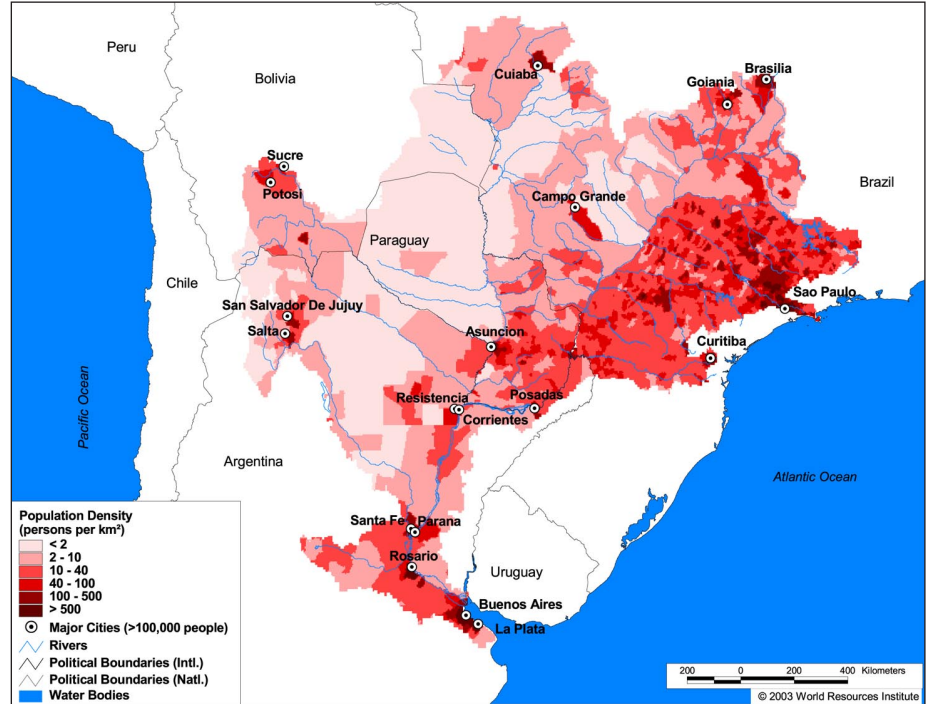
Land Cover and Use Variables

Percent Forest Cover:	18.1
Percent Grassland, Savanna and Shrubland:	33.0
Percent Wetlands:	10.9
Percent Cropland:	43.3
Percent Irrigated Cropland:	0.5
Percent Dryland Area:	0.6
Percent Urban and Industrial Area:	4.2
Percent Loss of Original Forest Cover:	70.6



Basin Indicators

Basin Area (sq. km):	2,582,704
Average Population Density (people per sq. km):	26
Number of Large Cities (>100,000 people):	19
Water Supply per Person (1995)(m ³ /year):	8,025
Degree of River Fragmentation:	High
Number of Dams (>15m high) in Basin:	29
Number of Dams (>150m high) in Basin:	1
Number of Dams (>60m high) under Construction:	4
Number of Dams (>15m high) on Main Stem of River:	15
Number of Dams (>150m high) on Main Stem of River:	1



Biodiversity Information and Indicators

Number of Fish Species:	355
Number of Fish Endemics:	-
Number of Amphibian Species:	-
Number of Ramsar Sites:	12
Number of Wetland-Dependent IBAs:	-
Number of Endemic Bird Areas:	6
Percent Protected Area:	2.8

