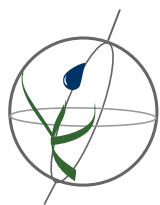
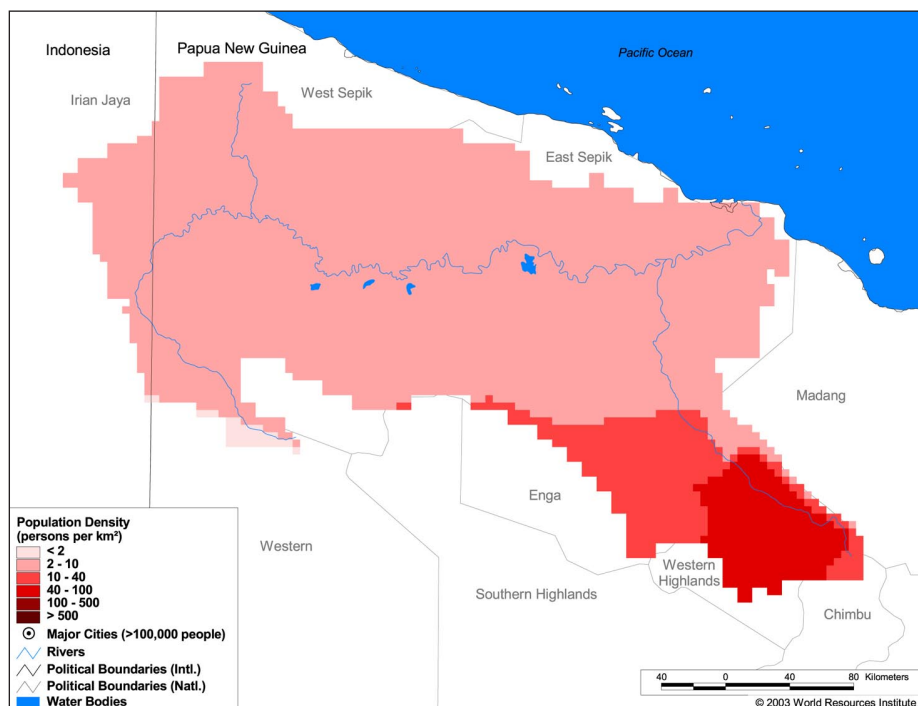


## Land Cover and Use Variables

Percent Forest Cover:	76.3
Percent Grassland, Savanna and Shrubland:	15.1
Percent Wetlands:	33.8
Percent Cropland:	6.6
Percent Irrigated Cropland:	0.0
Percent Dryland Area:	0.0
Percent Urban and Industrial Area:	0.1
Percent Loss of Original Forest Cover:	23.8

**Basin Indicators**

Basin Area (sq. km):	80,321
Average Population Density (people per sq. km):	9
Number of Large Cities (>100,000 people):	0
Water Supply per Person (1995)(m <sup>3</sup> /year):	143,175
Degree of River Fragmentation:	-
Number of Dams (>15m high) in Basin:	0
Number of Dams (>150m high) in Basin:	0
Number of Dams (>60m high) under Construction:	0
Number of Dams (>15m high) on Main Stem of River:	0
Number of Dams (>150m high) on Main Stem of River:	0

**Biodiversity Information and Indicators**

Number of Fish Species:	57
Number of Fish Endemics:	0
Number of Amphibian Species:	-
Number of Ramsar Sites:	0
Number of Wetland-Dependent IBAs:	-
Number of Endemic Bird Areas:	3
Percent Protected Area:	0.0

