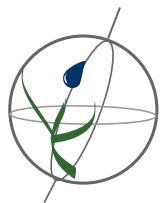


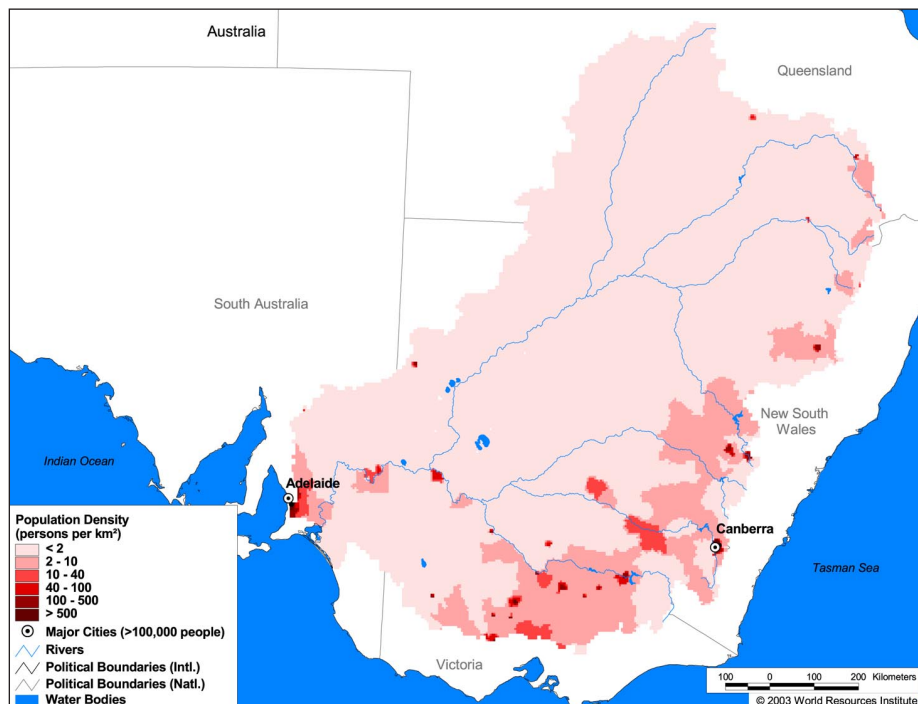
## Land Cover and Use Variables

Percent Forest Cover:	8.0
Percent Grassland, Savanna and Shrubland:	62.1
Percent Wetlands:	3.4
Percent Cropland:	28.4
Percent Irrigated Cropland:	1.6
Percent Dryland Area:	80.7
Percent Urban and Industrial Area:	1.2
Percent Loss of Original Forest Cover:	63.7



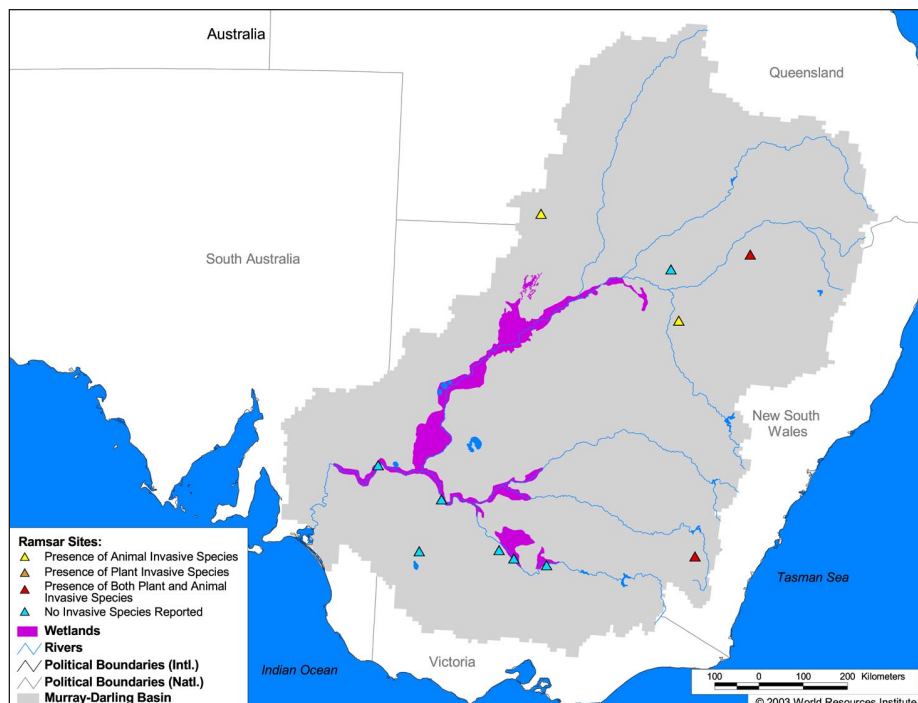
### Basin Indicators

Basin Area (sq. km):	1,050,116
Average Population Density (people per sq. km):	2
Number of Large Cities (>100,000 people):	2
Water Supply per Person (1995)(m <sup>3</sup> /year):	11,549
Degree of River Fragmentation:	-
Number of Dams (>15m high) in Basin:	116
Number of Dams (>150m high) in Basin:	1
Number of Dams (>60m high) under Construction:	0
Number of Dams (>15m high) on Main Stem of River:	3
Number of Dams (>150m high) on Main Stem of River:	0



### Biodiversity Information and Indicators

Number of Fish Species:	35
Number of Fish Endemics:	7
Number of Amphibian Species:	67
Number of Ramsar Sites:	11
Number of Wetland-Dependent IBAs:	-
Number of Endemic Bird Areas:	2
Percent Protected Area:	4.2



Murray-Darling Basin Commission: <http://www.mdbc.gov.au/>