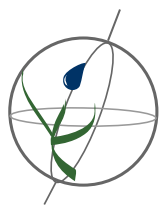


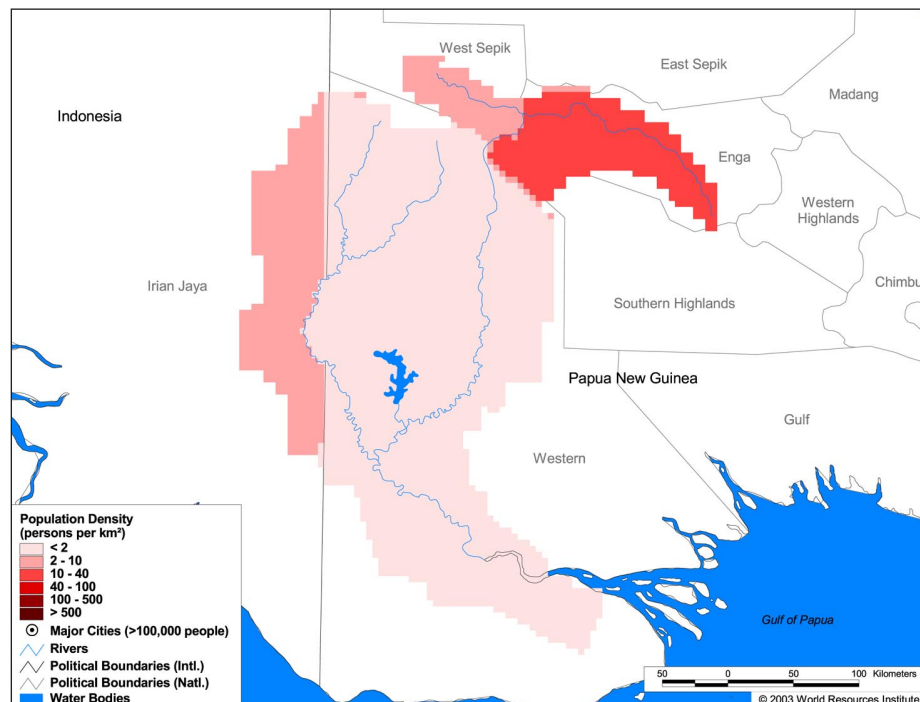
Land Cover and Use Variables

Percent Forest Cover:	75.8
Percent Grassland, Savanna and Shrubland:	18.3
Percent Wetlands:	41.7
Percent Cropland:	2.4
Percent Irrigated Cropland:	0.0
Percent Dryland Area:	0.0
Percent Urban and Industrial Area:	0.3
Percent Loss of Original Forest Cover:	6.1



Basin Indicators

Basin Area (sq. km):	78,855
Average Population Density (people per sq. km):	3
Number of Large Cities (>100,000 people):	0
Water Supply per Person (1995)(m ³ /year):	555,800
Degree of River Fragmentation:	-
Number of Dams (>15m high) in Basin:	0
Number of Dams (>150m high) in Basin:	0
Number of Dams (>60m high) under Construction:	0
Number of Dams (>15m high) on Main Stem of River:	0
Number of Dams (>150m high) on Main Stem of River:	0



Biodiversity Information and Indicators

Number of Fish Species:	128
Number of Fish Endemics:	5
Number of Amphibian Species:	-
Number of Ramsar Sites:	0
Number of Wetland-Dependent IBAs:	-
Number of Endemic Bird Areas:	3
Percent Protected Area:	0.0

