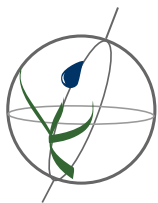


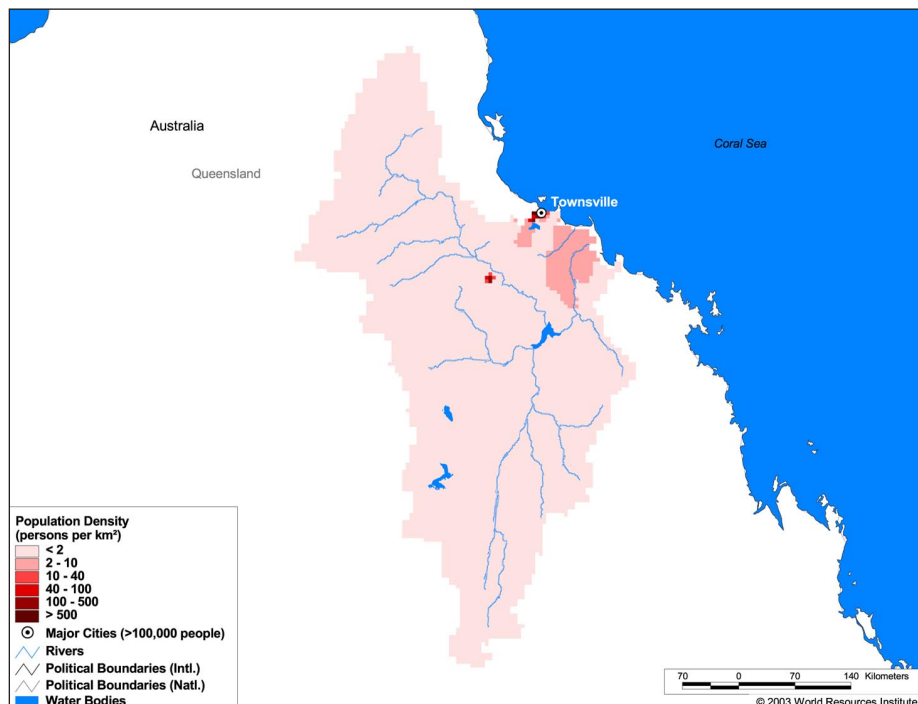
Land Cover and Use Variables

Percent Forest Cover:	3.6
Percent Grassland, Savanna and Shrubland:	93.5
Percent Wetlands:	0.3
Percent Cropland:	2.2
Percent Irrigated Cropland:	1.3
Percent Dryland Area:	73.6
Percent Urban and Industrial Area:	0.6
Percent Loss of Original Forest Cover:	-



Basin Indicators

Basin Area (sq. km):	146,219
Average Population Density (people per sq. km):	1
Number of Large Cities (>100,000 people):	1
Water Supply per Person (1995)(m ³ /year):	239,338
Degree of River Fragmentation:	-
Number of Dams (>15m high) in Basin:	1
Number of Dams (>150m high) in Basin:	0
Number of Dams (>60m high) under Construction:	0
Number of Dams (>15m high) on Main Stem of River:	1
Number of Dams (>150m high) on Main Stem of River:	0



Biodiversity Information and Indicators

Number of Fish Species:	-
Number of Fish Endemics:	-
Number of Amphibian Species:	32
Number of Ramsar Sites:	1
Number of Wetland-Dependent IBAs:	-
Number of Endemic Bird Areas:	-
Percent Protected Area:	-

