

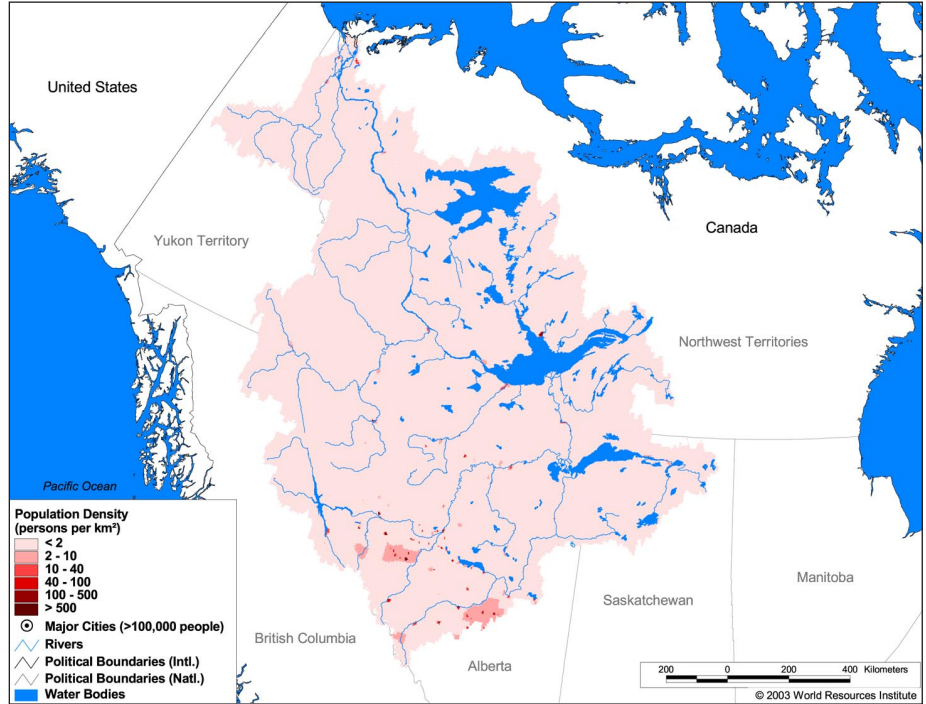
### Land Cover and Use Variables

Percent Forest Cover:	66.0
Percent Grassland, Savanna and Shrubland:	14.7
Percent Wetlands:	48.9
Percent Cropland:	2.6
Percent Irrigated Cropland:	0.0
Percent Dryland Area:	26.4
Percent Urban and Industrial Area:	1.9
Percent Loss of Original Forest Cover:	6.7



### Basin Indicators

Basin Area (sq. km.):	1,706,388
Average Population Density (people per sq. km.):	< 1
Number of Large Cities (>100,000 people)	0
Water Supply per Person (1995)(m <sup>3</sup> /year):	408,243
Degree of river fragmentation:	Medium
Number of Dams (>15m high) in Basin:	2
Number of Dams (>150m high) in Basin:	0
Number of Dams (>60m high) under Construction:	0
Number of Dams (>15m high) on Main Stem of River:	0
Number of Dams (>150m high) on Main Stem of River:	0



### Biodiversity Information and Indicators

Number of Fish Species:	53
Number of Fish Endemics:	0
Number of Amphibian Species:	-
Number of Ramsar Sites:	3
Number of Wetland-Dependent IBAs:	-
Number of Endemic Bird Areas:	0
Percent Protected Area:	5.1

