

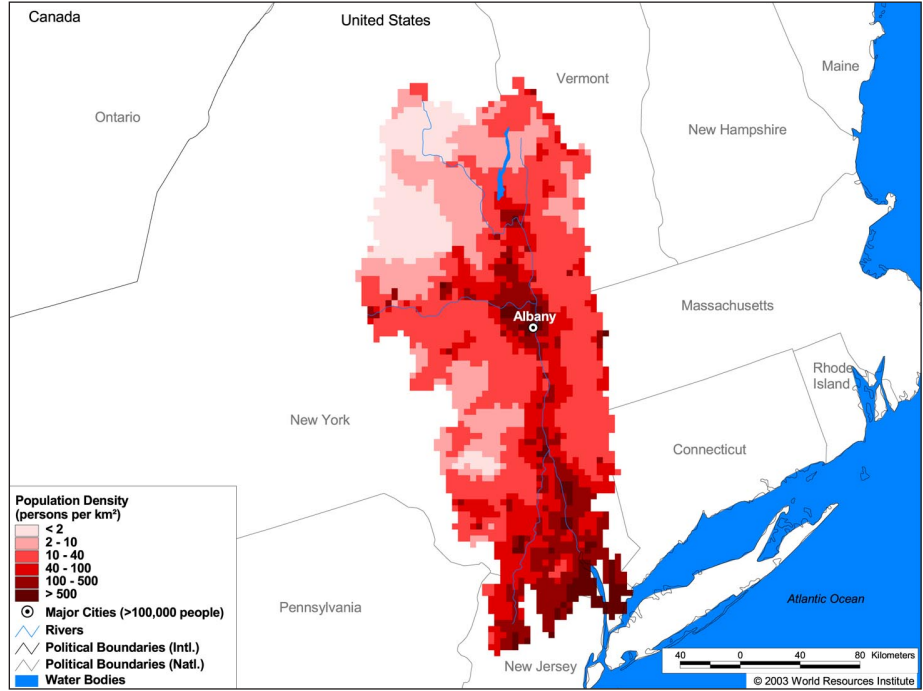
Land Cover and Use Variables

Percent Forest Cover:	76.3
Percent Grassland, Savanna and Shrubland:	0.0
Percent Wetlands:	15.0
Percent Cropland:	0.3
Percent Irrigated Cropland:	0.0
Percent Dryland Area:	0.0
Percent Urban and Industrial Area:	22.8
Percent Loss of Original Forest Cover:	9.1



Basin Indicators

Basin Area (sq. km.):	41,906
Average Population Density (people per sq. km.):	101
Number of Large Cities (>100,000 people):	1
Water Supply per Person (1995)(m ³ /year):	3,335
Degree of river fragmentation:	Medium
Number of Dams (>15m high) in Basin:	53
Number of Dams (>150m high) in Basin:	7
Number of Dams (>60m high) under Construction:	0
Number of Dams (>15m high) on Main Stem of River:	2
Number of Dams (>150m high) on Main Stem of River:	0



Biodiversity Information and Indicators

Number of Fish Species:	84
Number of Fish Endemics:	0
Number of Amphibian Species:	3
Number of Ramsar Sites:	0
Number of Wetland-Dependent IBAs:	-
Number of Endemic Bird Areas:	0
Percent Protected Area:	1.5

