

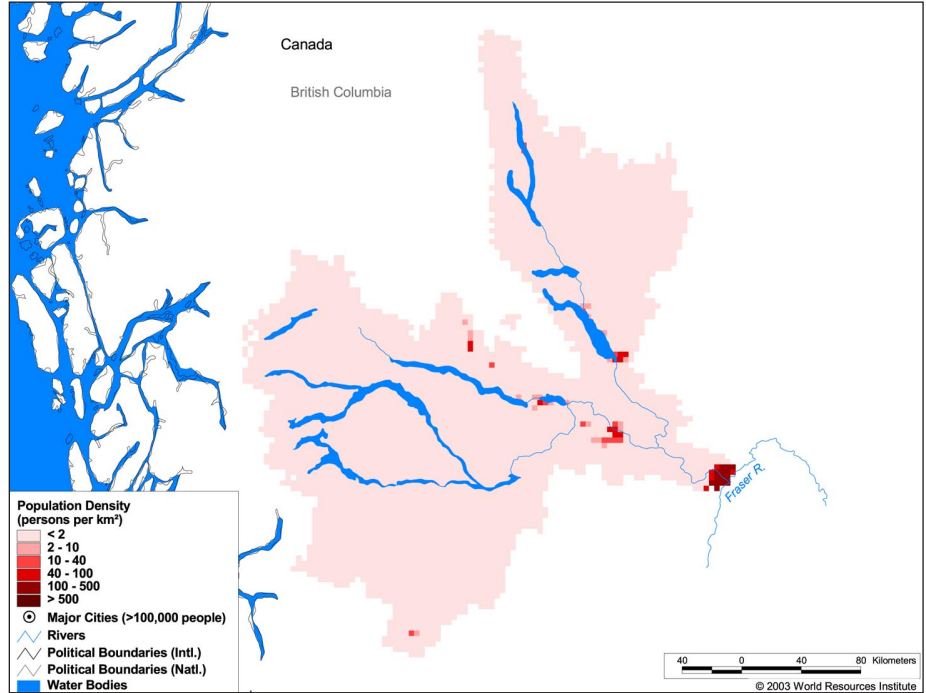
### Land Cover and Use Variables

|   |      |
|---|------|
| Percent Forest Cover:                     | 87.8 |
| Percent Grassland, Savanna and Shrubland: | 0.9  |
| Percent Wetlands:                         | 4.3  |
| Percent Cropland:                         | 0.2  |
| Percent Irrigated Cropland:               | 59.3 |
| Percent Dryland Area:                     | -    |
| Percent Urban and Industrial Area:        | -    |
| Percent Loss of Original Forest Cover:    | 3.3  |



### Basin Indicators

|   |          |
|---|----------|
| Basin Area (sq. km.):                                 | 60,084   |
| Average Population Density (people per sq. km.):      | 1        |
| Number of Large Cities (>100,000 people):             | 5        |
| Water Supply per Person (1995)(m <sup>3</sup> /year): | > 10,000 |
| Degree of river fragmentation:                        | -        |
| Number of Dams (>15m high) in Basin:                  | 2        |
| Number of Dams (>150m high) in Basin:                 | 0        |
| Number of Dams (>60m high) under Construction:        | 0        |
| Number of Dams (>15m high) on Main Stem of River:     | 1        |
| Number of Dams (>150m high) on Main Stem of River:    | 0        |



### Biodiversity Information and Indicators

|                                   |      |
|-----------------------------------|------|
| Number of Fish Species:           | 38   |
| Number of Fish Endemics:          | 0    |
| Number of Amphibian Species:      | -    |
| Number of Ramsar Sites:           | 0    |
| Number of Wetland-Dependent IBAs: | -    |
| Number of Endemic Bird Areas:     | 0    |
| Percent Protected Area:           | 17.5 |

