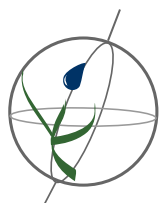


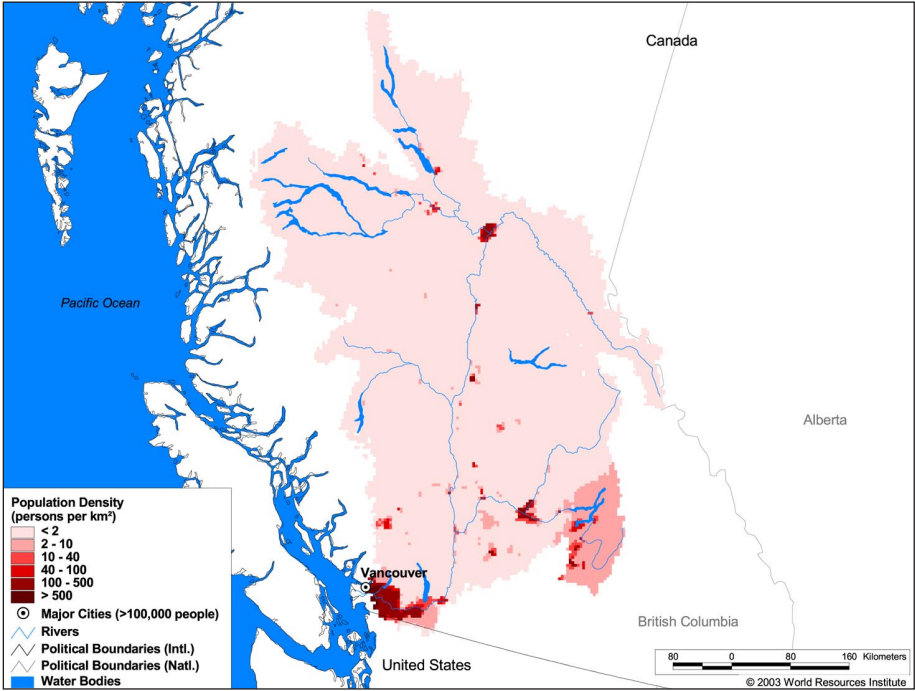
### Land Cover and Use Variables

Percent Forest Cover:	85.7
Percent Grassland, Savanna and Shrubland:	6.2
Percent Wetlands:	1.7
Percent Cropland:	0.4
Percent Irrigated Cropland:	0.0
Percent Dryland Area:	9.3
Percent Urban and Industrial Area:	4.1
Percent Loss of Original Forest Cover:	7.0



**Basin Indicators**

Basin Area (sq. km.):	248,016
Average Population Density (people per sq. km.):	4
Number of Large Cities (>100,000 people):	1
Water Supply per Person (1995)(m <sup>3</sup> /year):	60,950
Degree of river fragmentation:	Medium
Number of Dams (>15m high) in Basin:	3
Number of Dams (>150m high) in Basin:	0
Number of Dams (>60m high) under Construction:	0
Number of Dams (>15m high) on Main Stem of River:	0
Number of Dams (>150m high) on Main Stem of River:	0



**Biodiversity Information and Indicators**

Number of Fish Species:	46
Number of Fish Endemics:	0
Number of Amphibian Species:	5
Number of Ramsar Sites:	0
Number of Wetland-Dependent IBAs:	-
Number of Endemic Bird Areas:	0
Percent Protected Area:	11.8

