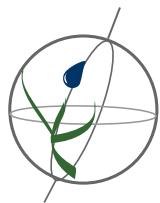


Land Cover and Use Variables

Percent Forest Cover:	61.5
Percent Grassland, Savanna and Shrubland:	33.0
Percent Wetlands:	0.0
Percent Cropland:	1.9
Percent Irrigated Cropland:	2.1
Percent Dryland Area:	99.8
Percent Urban and Industrial Area:	3.0
Percent Loss of Original Forest Cover:	16.2

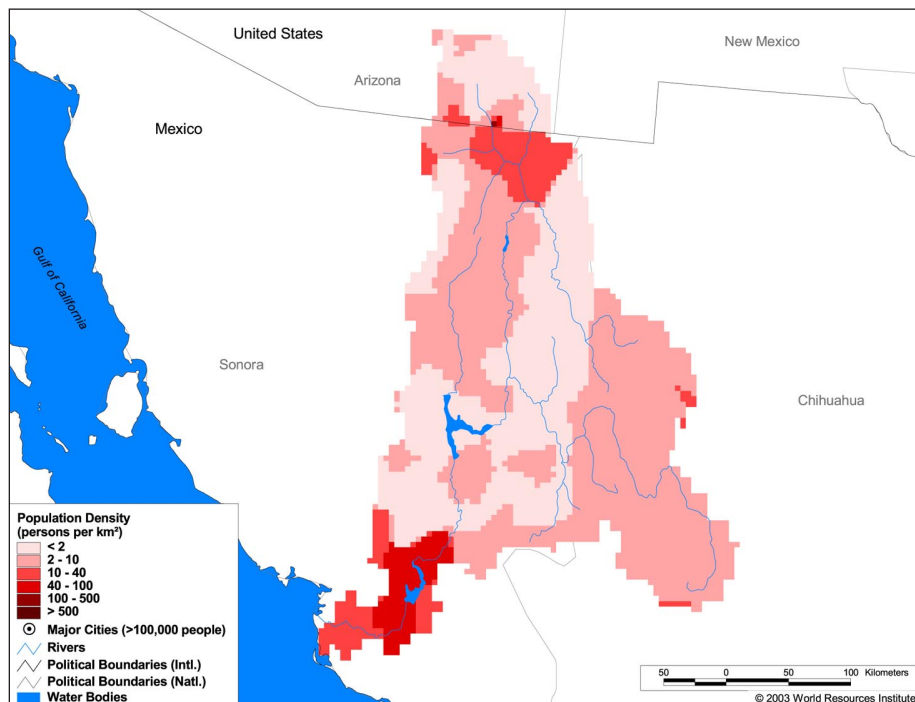


Watersheds of North and Central America

NA18 Yaqui

Basin Indicators

Basin Area (sq. km.):	79,162
Average Population Density (people per sq. km.):	7
Number of Large Cities (>100,000 people)	0
Water Supply per Person (1995)(m ³ /year):	173
Degree of river fragmentation:	-
Number of Dams (>15m high) in Basin:	3
Number of Dams (>150m high) in Basin:	0
Number of Dams (>60m high) under Construction:	0
Number of Dams (>15m high) on Main Stem of River:	1
Number of Dams (>150m high) on Main Stem of River:	0



Biodiversity Information and Indicators

Number of Fish Species:	62
Number of Fish Endemics:	5
Number of Amphibian Species:	24
Number of Ramsar Sites:	0
Number of Wetland-Dependent IBAs:	-
Number of Endemic Bird Areas:	2
Percent Protected Area:	8.7

