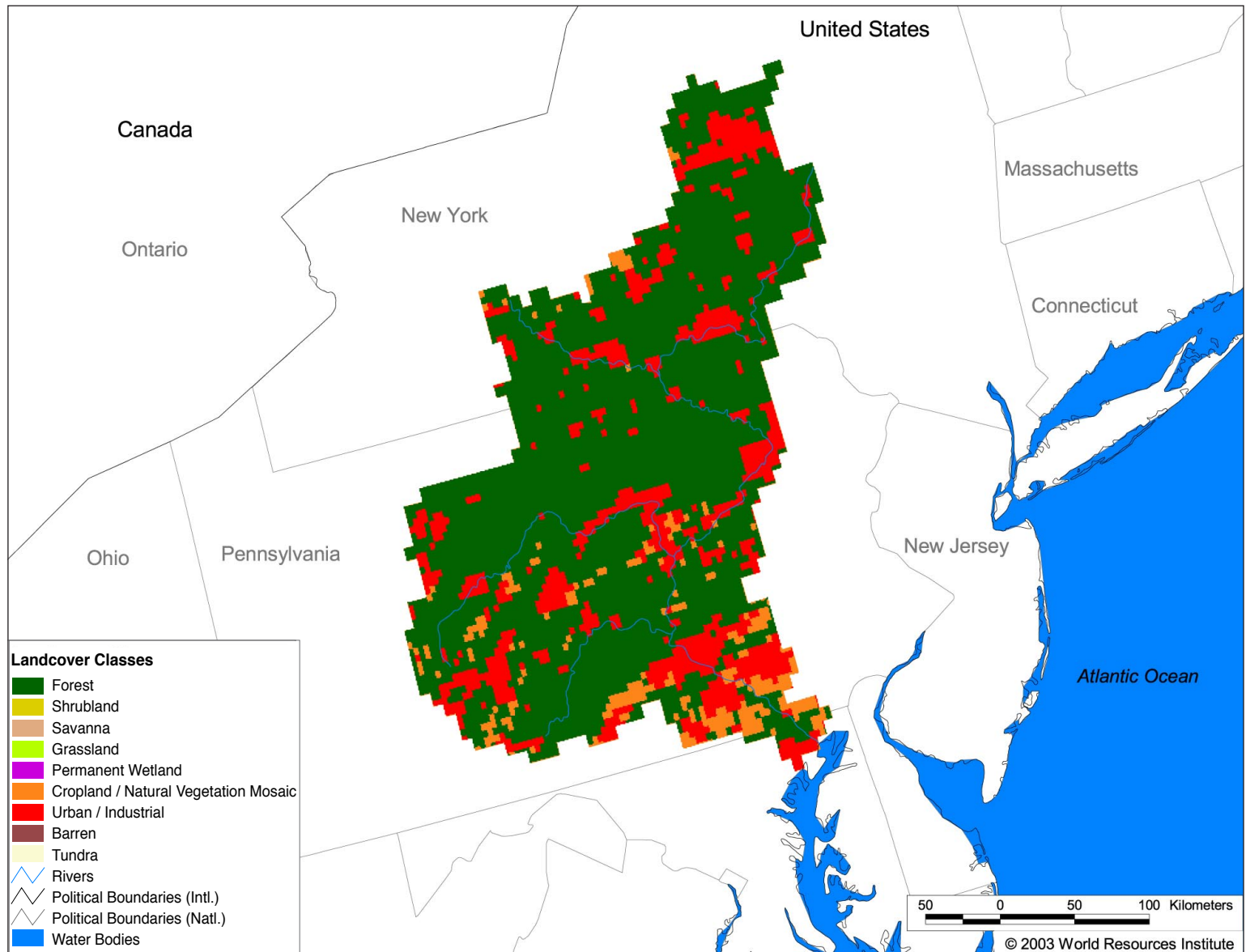




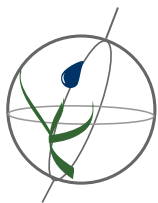
Watersheds of North and Central America

NA16 Susquehanna



Land Cover and Use Variables

| | |
|---|------|
| Percent Forest Cover: | 73.3 |
| Percent Grassland, Savanna and Shrubland: | 0.0 |
| Percent Wetlands: | 4.0 |
| Percent Cropland: | 7.0 |
| Percent Irrigated Cropland: | 0.0 |
| Percent Dryland Area: | 0.0 |
| Percent Urban and Industrial Area: | 19.2 |
| Percent Loss of Original Forest Cover: | 14.0 |

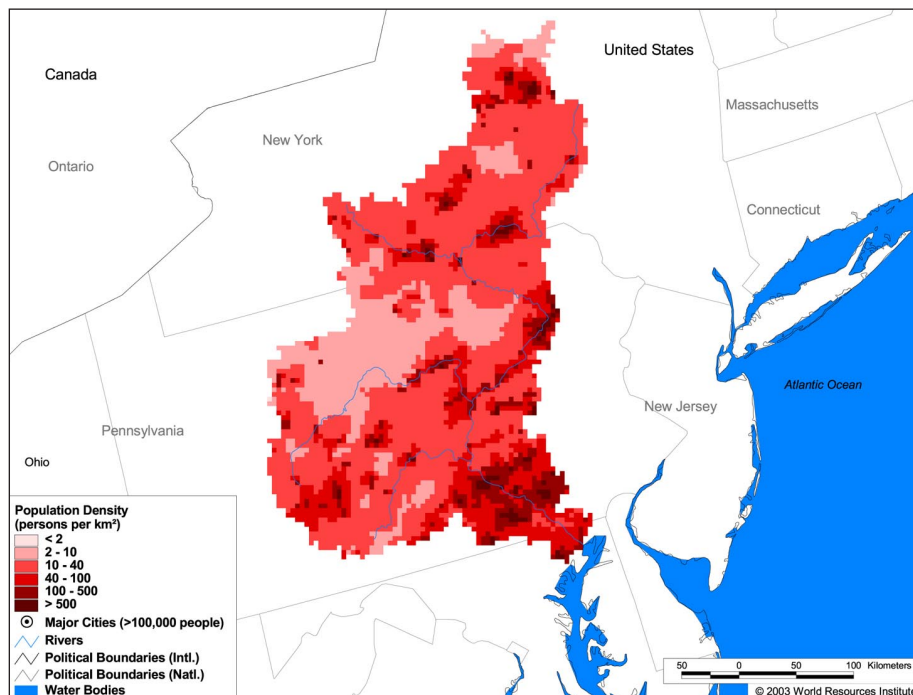


Watersheds of North and Central America

NA16 Susquehanna

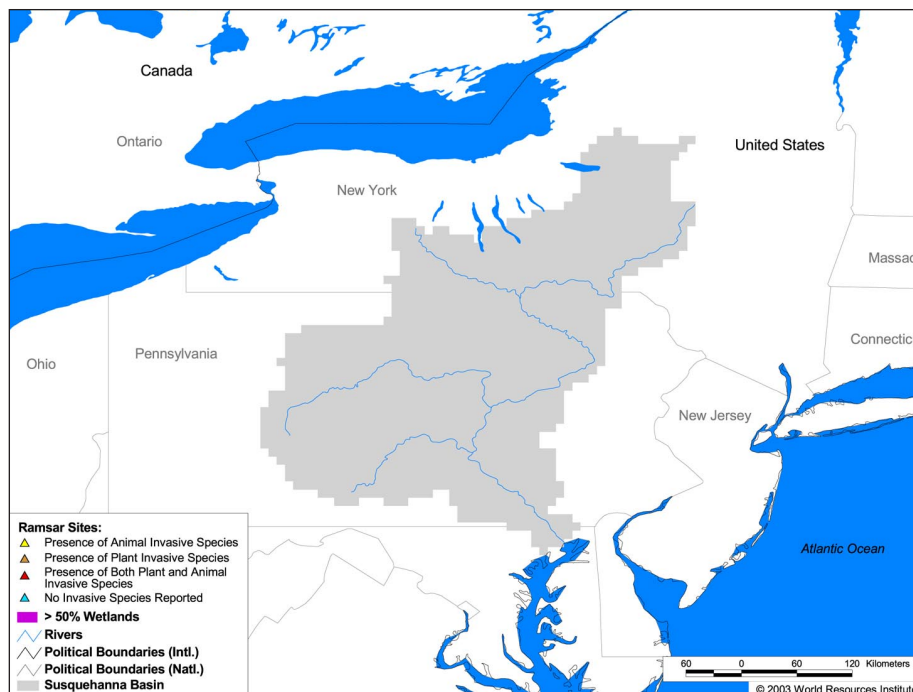
Basin Indicators

| | |
|---|--------|
| Basin Area (sq. km.): | 78,672 |
| Average Population Density (people per sq. km.): | 56 |
| Number of Large Cities (>100,000 people): | 0 |
| Water Supply per Person (1995)(m ³ /year): | 9,029 |
| Degree of river fragmentation: | Medium |
| Number of Dams (>15m high) in Basin: | 124 |
| Number of Dams (>150m high) in Basin: | 3 |
| Number of Dams (>60m high) under Construction: | 0 |
| Number of Dams (>15m high) on Main Stem of River: | 5 |
| Number of Dams (>150m high) on Main Stem of River: | 0 |



Biodiversity Information and Indicators

| | |
|-----------------------------------|-----|
| Number of Fish Species: | 128 |
| Number of Fish Endemics: | 0 |
| Number of Amphibian Species: | 3 |
| Number of Ramsar Sites: | 0 |
| Number of Wetland-Dependent IBAs: | - |
| Number of Endemic Bird Areas: | 0 |
| Percent Protected Area: | 0.3 |



Susquehanna River Basin Commission: <http://www.srbc.net/>