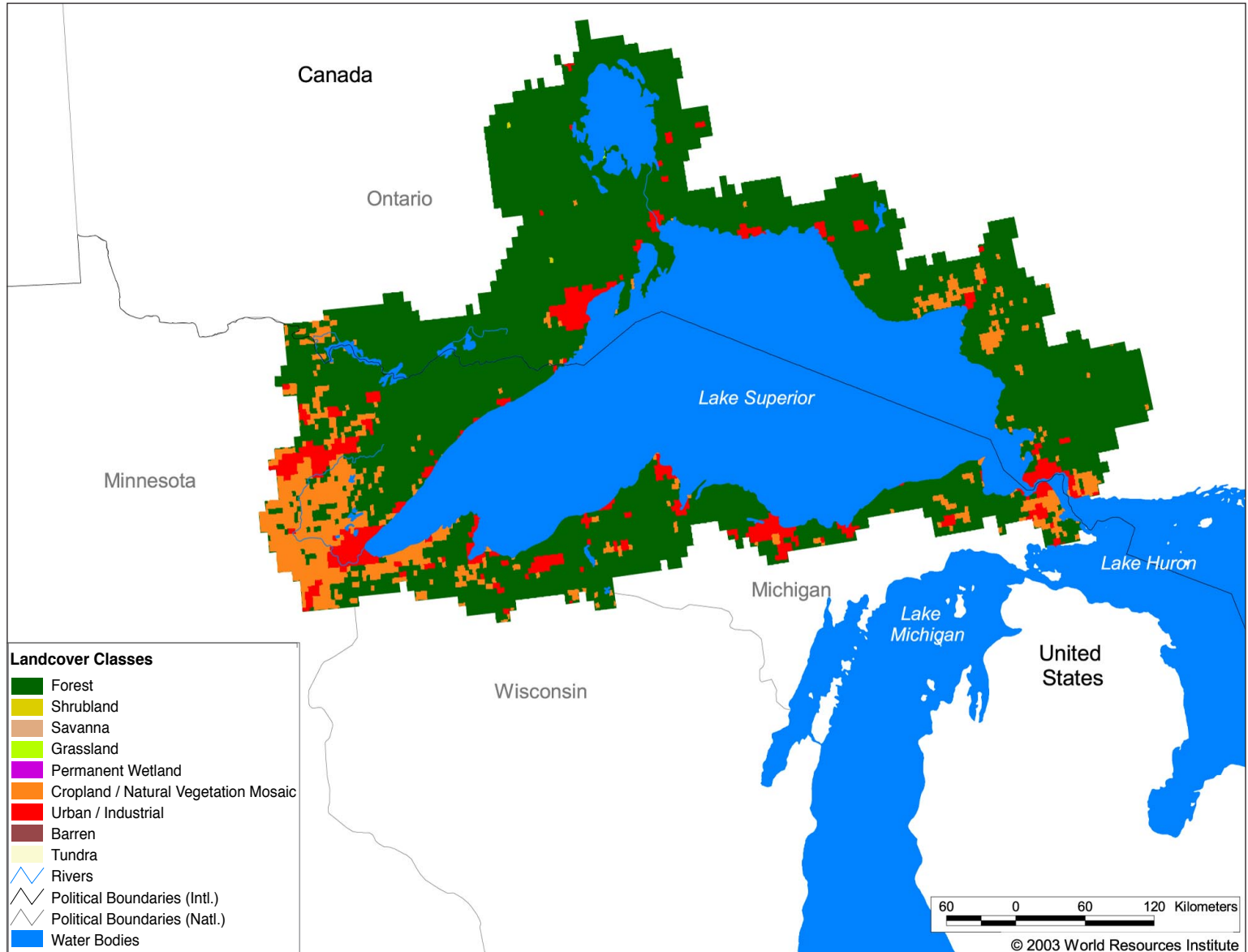




# Watersheds of North and Central America

## NA14 Saint Lawrence I Lake Superior



### Land Cover and Use Variables

Percent Forest Cover:	71.5
Percent Grassland, Savanna and Shrubland:	0.0
Percent Wetlands:	16.0
Percent Cropland:	10.4
Percent Irrigated Cropland:	0.1
Percent Dryland Area:	0.0
Percent Urban and Industrial Area:	10.2
Percent Loss of Original Forest Cover:	1.2

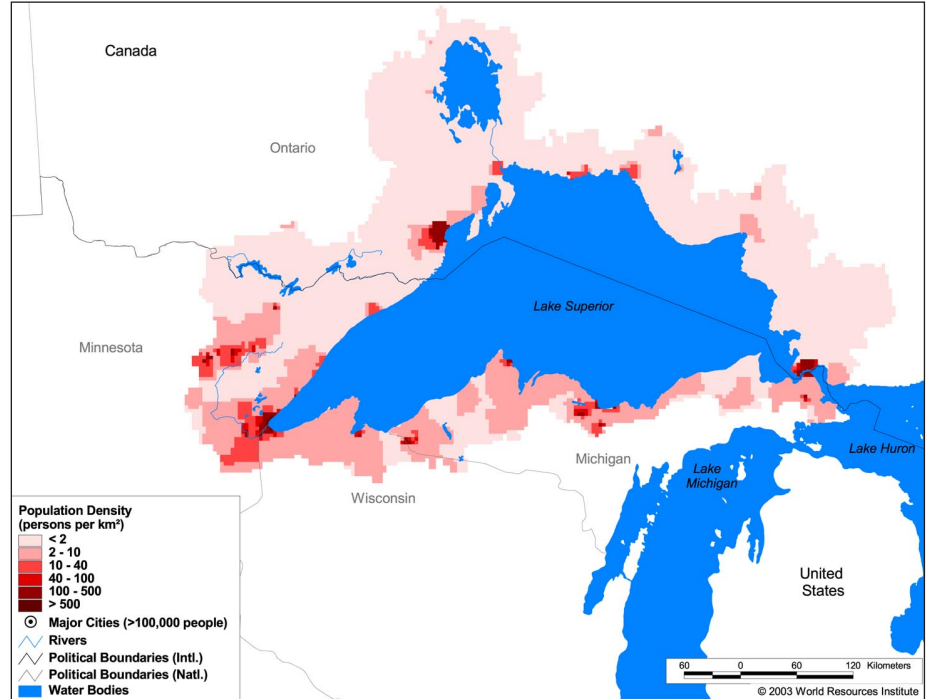


# Watersheds of North and Central America

## NA14 Saint Lawrence I Lake Superior

### Basin Indicators

Basin Area (sq. km.):	219,442
Average Population Density (people per sq. km.):	5
Number of Large Cities (>100,000 people):	0
Water Supply per Person (1995)(m <sup>3</sup> /year):	4,000-10,000
Degree of river fragmentation:	-
Number of Dams (>15m high) in Basin:	1
Number of Dams (>150m high) in Basin:	0
Number of Dams (>60m high) under Construction:	0
Number of Dams (>15m high) on Main Stem of River:	0
Number of Dams (>150m high) on Main Stem of River:	0



### Biodiversity Information and Indicators

Number of Fish Species:	60
Number of Fish Endemics:	0
Number of Amphibian Species:	2
Number of Ramsar Sites:	0
Number of Wetland-Dependent IBAs:	-
Number of Endemic Bird Areas:	0
Percent Protected Area:	10.2

