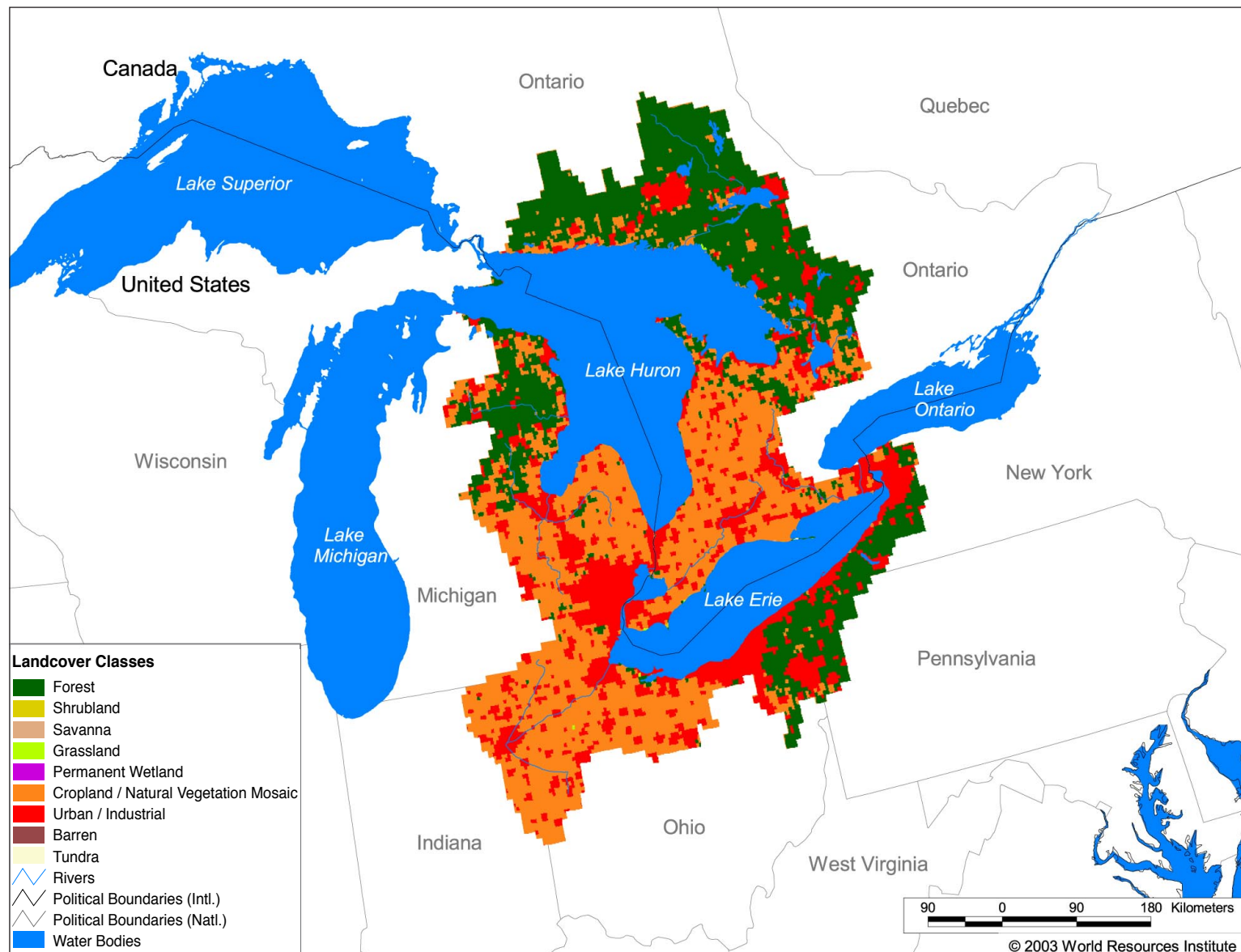


Watersheds of North and Central America

NA14 Saint Lawrence | Lakes Huron & Erie

Water Resources eAtlas



Land Cover and Use Variables

Percent Forest Cover:	32.5
Percent Grassland, Savanna and Shrubland:	0.1
Percent Wetlands:	5.0
Percent Cropland:	37.5
Percent Irrigated Cropland:	0.1
Percent Dryland Area:	0.0
Percent Urban and Industrial Area:	28.8
Percent Loss of Original Forest Cover:	58.2



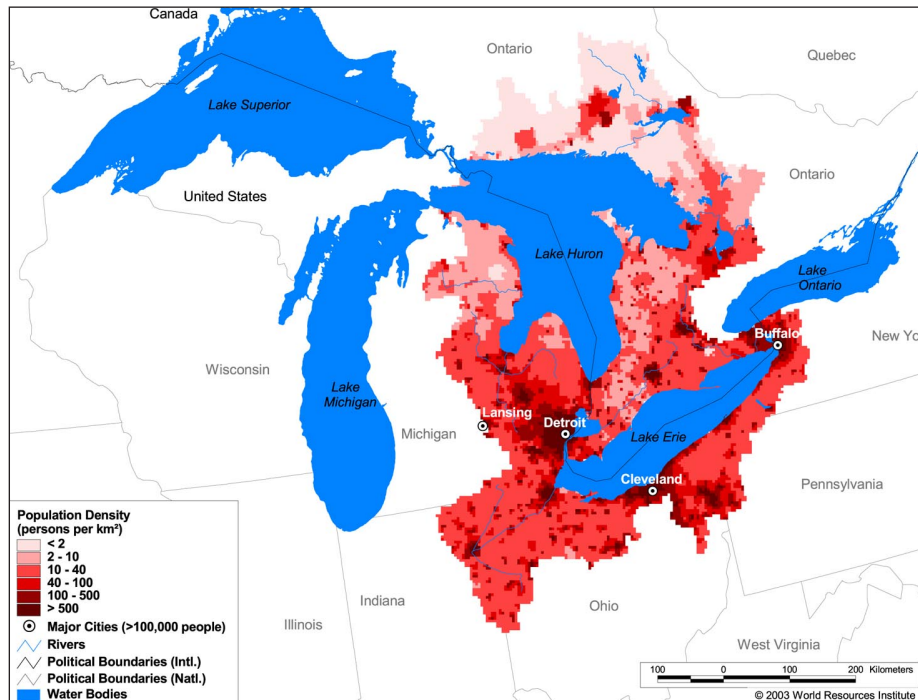
Watersheds of North and Central America

NA14 Saint Lawrence | Lakes Huron & Erie

Water Resources eAtlas

Basin Indicators

Basin Area (sq. km.):	307,422
Average Population Density (people per sq. km.):	77
Number of Large Cities (>100,000 people):	4
Water Supply per Person (1995)(m ³ /year):	4,000-10,000
Degree of river fragmentation:	-
Number of Dams (>15m high) in Basin:	1
Number of Dams (>150m high) in Basin:	0
Number of Dams (>60m high) under Construction:	0
Number of Dams (>15m high) on Main Stem of River:	0
Number of Dams (>150m high) on Main Stem of River:	0



Biodiversity Information and Indicators

Number of Fish Species:	103
Number of Fish Endemics:	0
Number of Amphibian Species:	3
Number of Ramsar Sites:	5
Number of Wetland-Dependent IBAs:	-
Number of Endemic Bird Areas:	0
Percent Protected Area:	1.4

