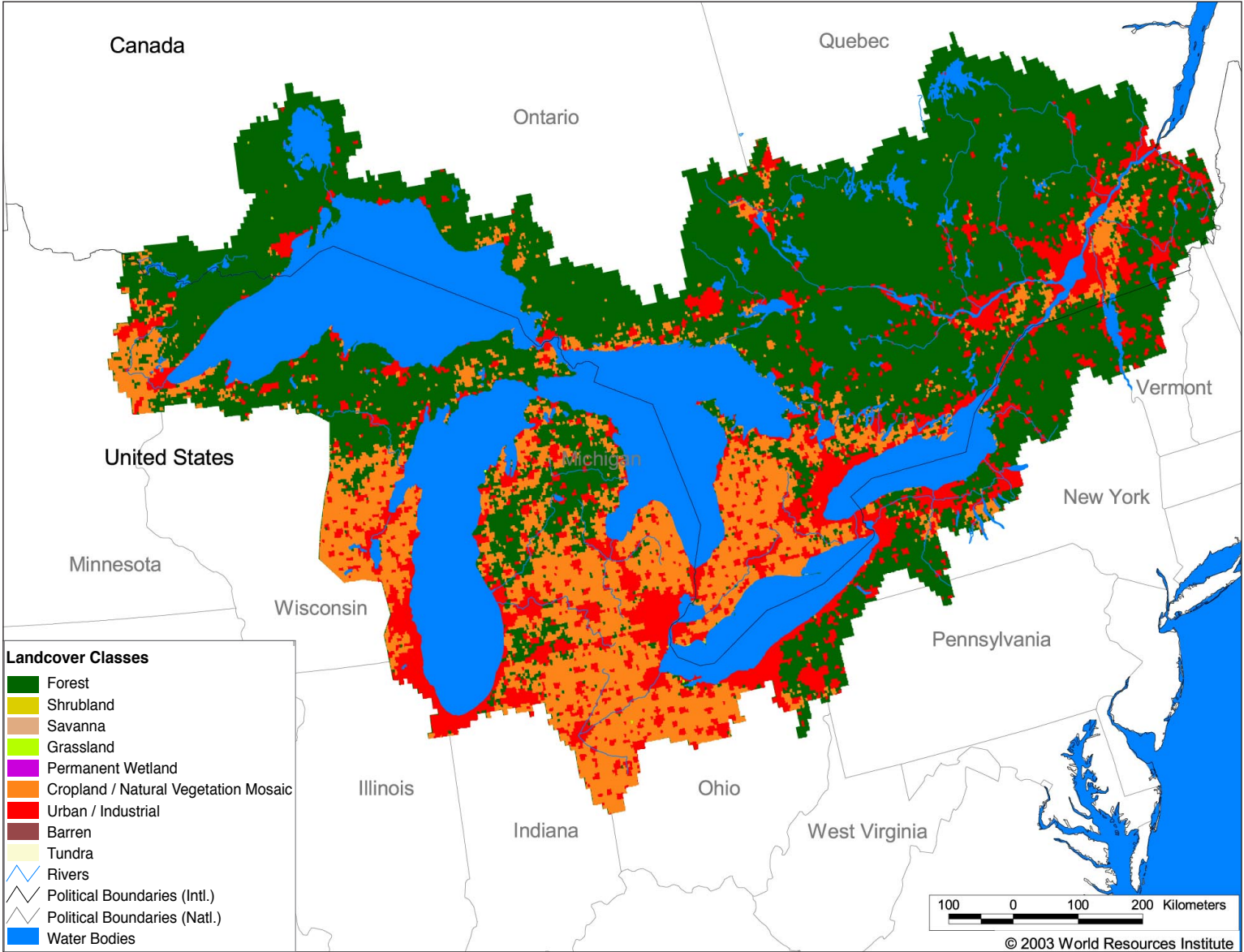
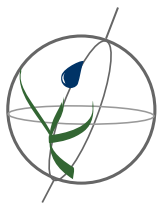


Watersheds of North and Central America  
**NA14 Saint Lawrence**



**Land Cover and Use Variables**

Percent Forest Cover:	43.5
Percent Grassland, Savanna and Shrubland:	0.1
Percent Wetlands:	47.2
Percent Cropland:	16.4
Percent Irrigated Cropland:	0.2
Percent Dryland Area:	0.0
Percent Urban and Industrial Area:	14.5
Percent Loss of Original Forest Cover:	31.0

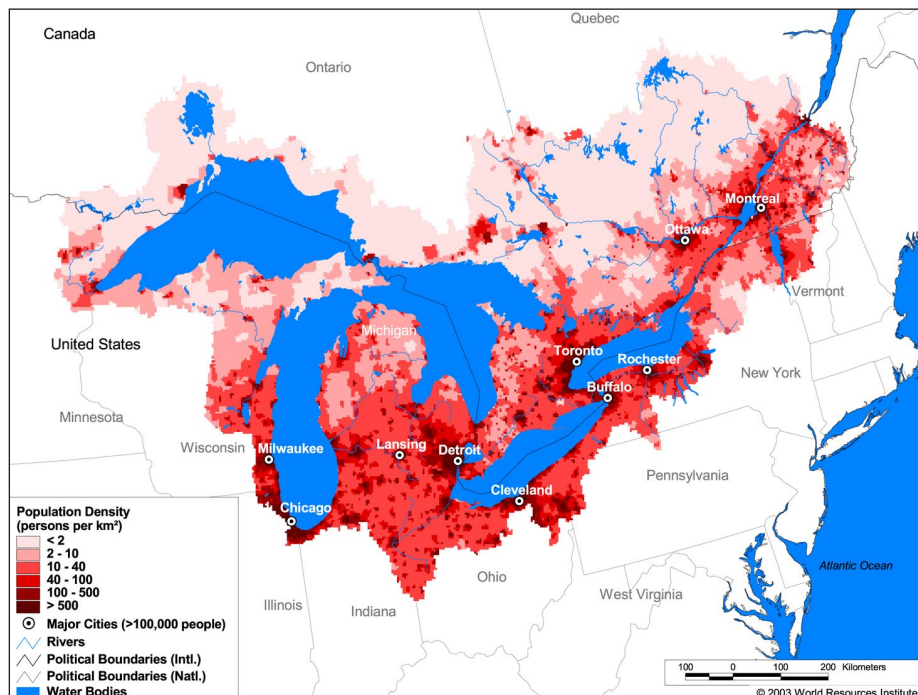


# Watersheds of North and Central America

## NA14 Saint Lawrence

### Basin Indicators

Basin Area (sq. km.):	1,049,636
Average Population Density (people per sq. km.):	59
Number of Large Cities (>100,000 people):	10
Water Supply per Person (1995)(m <sup>3</sup> /year):	9,095
Degree of river fragmentation:	High
Number of Dams (>15m high) in Basin:	109
Number of Dams (>150m high) in Basin:	2
Number of Dams (>60m high) under Construction:	0
Number of Dams (>15m high) on Main Stem of River:	14
Number of Dams (>150m high) on Main Stem of River:	0



### Biodiversity Information and Indicators

Number of Fish Species (St. Lawrence River only):	98
Number of Fish Endemics (St. Lawrence River only):	1
Number of Amphibian Species:	4
Number of Ramsar Sites:	8
Number of Wetland-Dependent IBAs:	-
Number of Endemic Bird Areas:	0
Percent Protected Area:	10.3

