

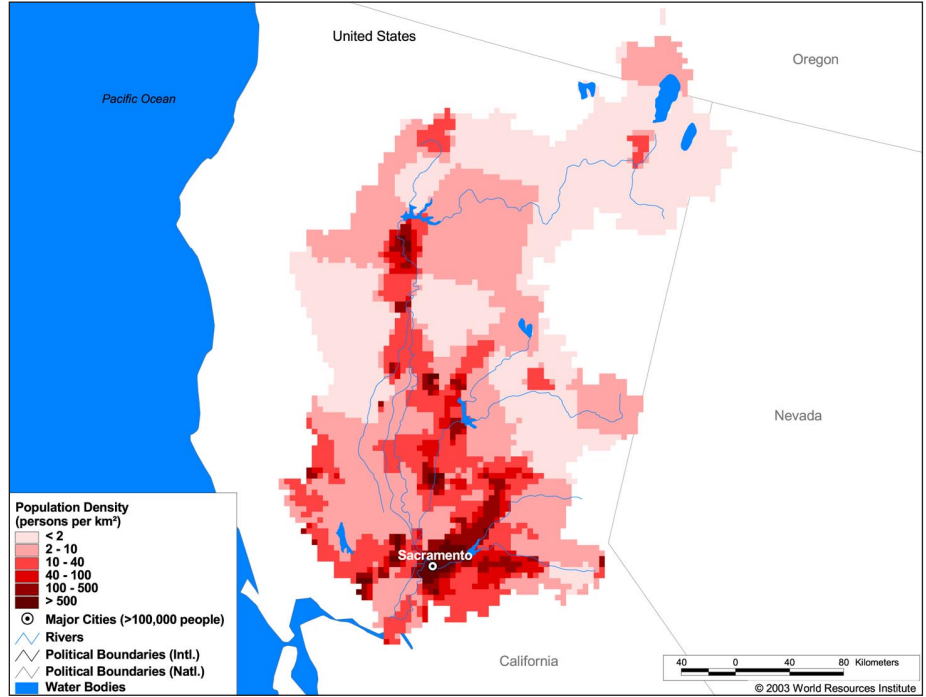
### Land Cover and Use Variables

Percent Forest Cover:	48.6
Percent Grassland, Savanna and Shrubland:	33.3
Percent Wetlands:	3.0
Percent Cropland:	6.0
Percent Irrigated Cropland:	11.5
Percent Dryland Area:	29.3
Percent Urban and Industrial Area:	11.5
Percent Loss of Original Forest Cover:	26.0



### Basin Indicators

Basin Area (sq. km.):	78,757
Average Population Density (people per sq. km.):	32
Number of Large Cities (>100,000 people):	1
Water Supply per Person (1995)(m <sup>3</sup> /year):	3,474
Degree of river fragmentation:	High
Number of Dams (>15m high) in Basin:	147
Number of Dams (>150m high) in Basin:	39
Number of Dams (>60m high) under Construction:	0
Number of Dams (>15m high) on Main Stem of River:	4
Number of Dams (>150m high) on Main Stem of River:	1



### Biodiversity Information and Indicators

Number of Fish Species:	-
Number of Fish Endemics:	6
Number of Amphibian Species:	10
Number of Ramsar Sites:	0
Number of Wetland-Dependent IBAs:	-
Number of Endemic Bird Areas:	1
Percent Protected Area:	3.4

