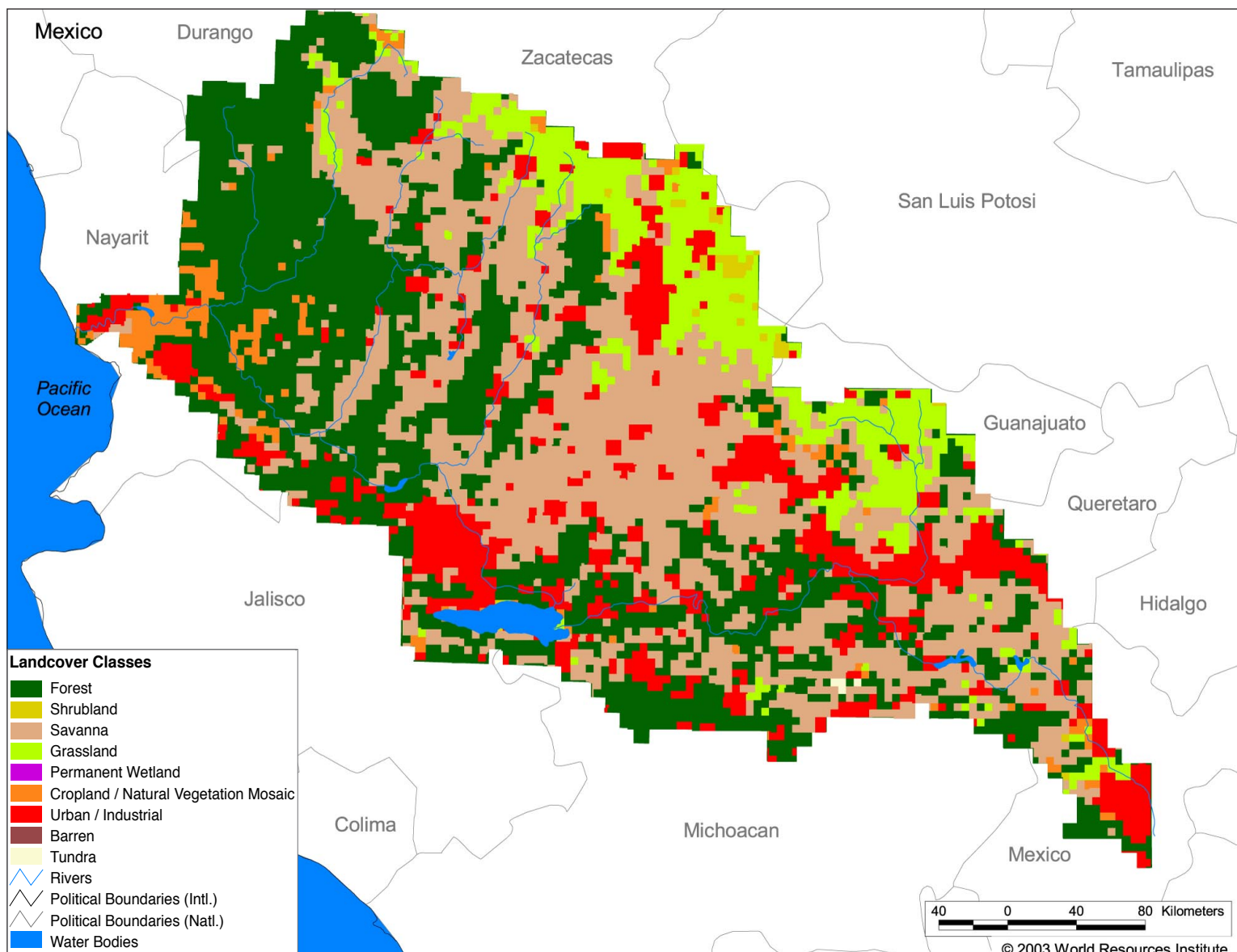


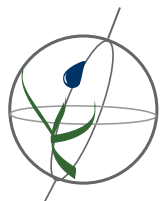
# Watersheds of North and Central America

## NA12 Rio Grande de Santiago



### Land Cover and Use Variables

Percent Forest Cover:	36.3
Percent Grassland, Savanna and Shrubland:	45.0
Percent Wetlands:	0.0
Percent Cropland:	4.2
Percent Irrigated Cropland:	9.0
Percent Dryland Area:	52.8
Percent Urban and Industrial Area:	13.9
Percent Loss of Original Forest Cover:	51.6

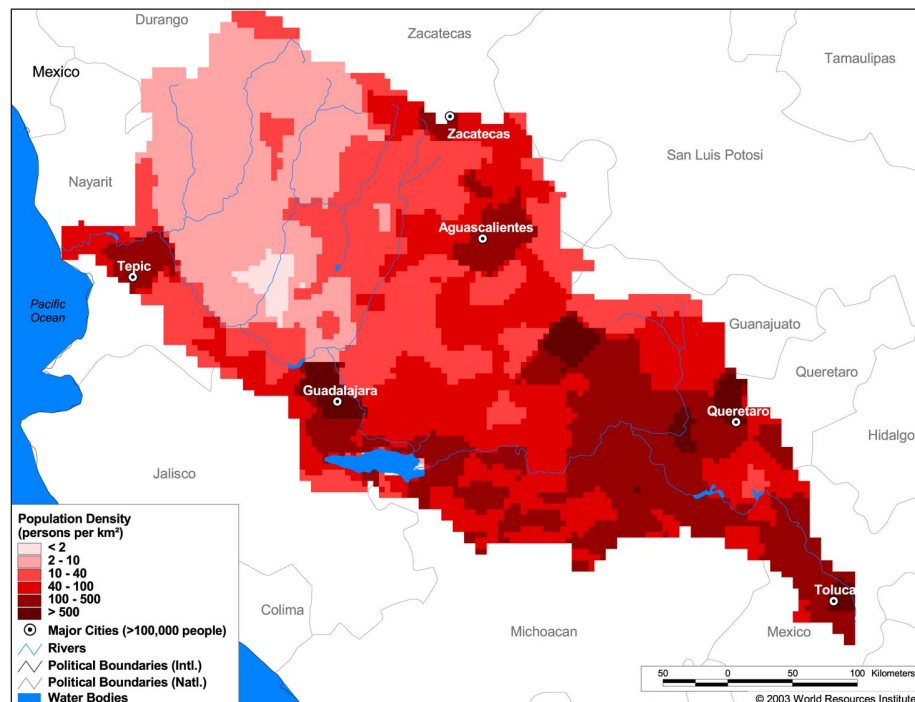


# Watersheds of North and Central America

## NA12 Rio Grande de Santiago

### Basin Indicators

Basin Area (sq. km.):	136,694
Average Population Density (people per sq. km.):	111
Number of Large Cities (>100,000 people):	6
Water Supply per Person (1995)(m <sup>3</sup> /year):	655
Degree of river fragmentation:	High
Number of Dams (>15m high) in Basin:	3
Number of Dams (>150m high) in Basin:	0
Number of Dams (>60m high) under Construction:	0
Number of Dams (>15m high) on Main Stem of River:	0
Number of Dams (>150m high) on Main Stem of River:	0



### Biodiversity Information and Indicators

Number of Fish Species:	-
Number of Fish Endemics:	-
Number of Amphibian Species:	50
Number of Ramsar Sites:	0
Number of Wetland-Dependent IBAs:	-
Number of Endemic Bird Areas:	3
Percent Protected Area:	0.3

