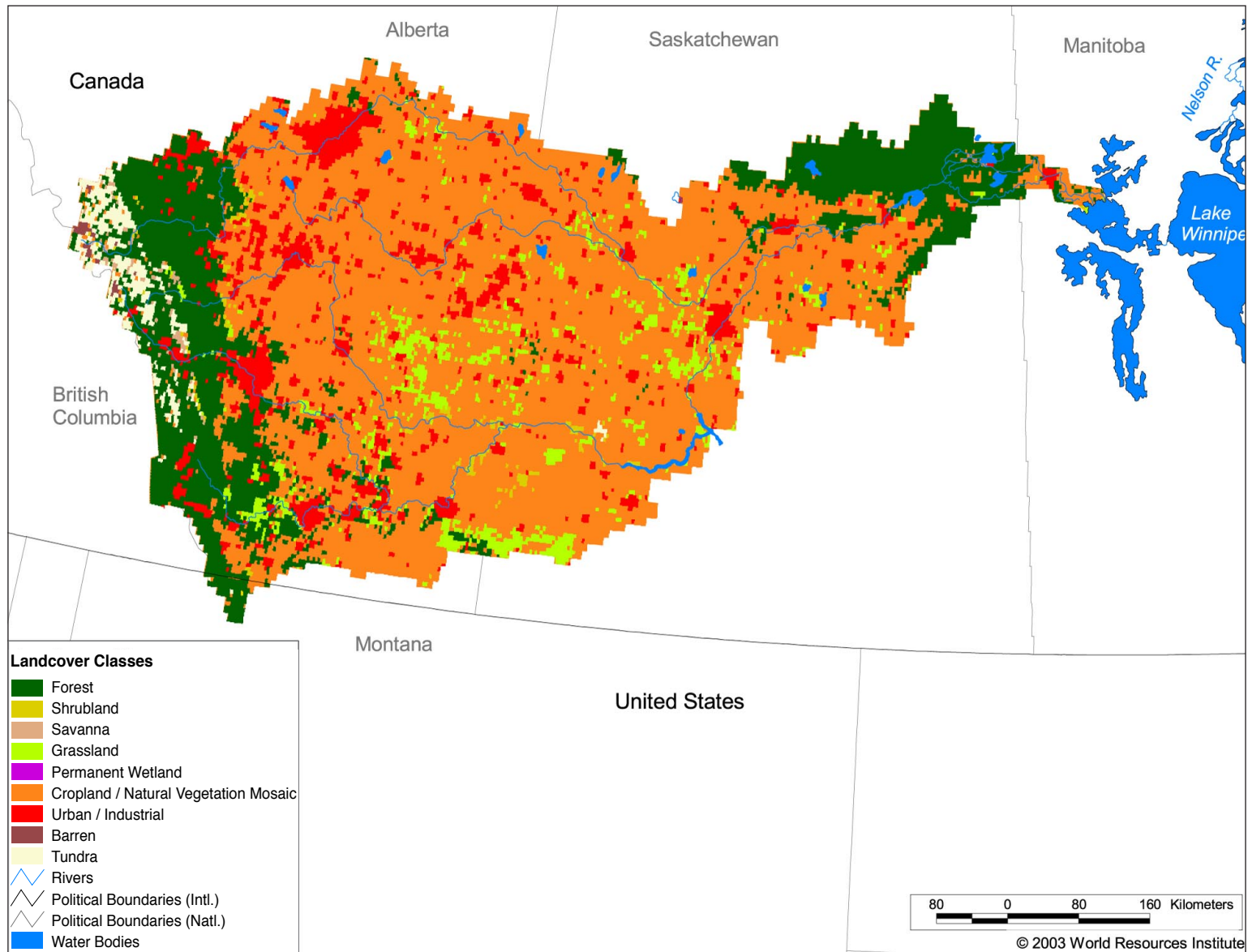




# Watersheds of North and Central America NA10 Nelson | Saskatchewan



## Land Cover and Use Variables

Percent Forest Cover:	21.7
Percent Grassland, Savanna and Shrubland:	6.8
Percent Wetlands:	24.0
Percent Cropland:	66.8
Percent Irrigated Cropland:	0.2
Percent Dryland Area:	-
Percent Urban and Industrial Area:	-
Percent Loss of Original Forest Cover:	34.6

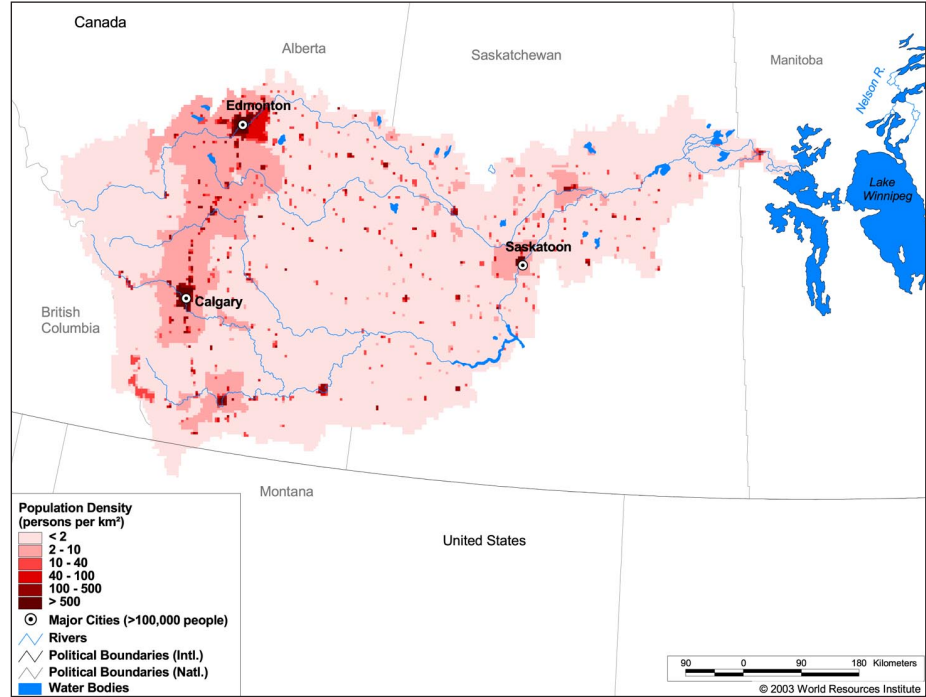


# Watersheds of North and Central America

## NA10 Nelson | Saskatchewan

### Basin Indicators

Basin Area (sq. km.):	370,884
Average Population Density (people per sq. km.):	8
Number of Large Cities (>100,000 people):	3
Water Supply per Person (1995)(m <sup>3</sup> /year):	> 10,000
Degree of river fragmentation:	-
Number of Dams (>15m high) in Basin:	3
Number of Dams (>150m high) in Basin:	0
Number of Dams (>60m high) under Construction:	0
Number of Dams (>15m high) on Main Stem of River:	3
Number of Dams (>150m high) on Main Stem of River:	0



### Biodiversity Information and Indicators

Number of Fish Species:	-
Number of Fish Endemics:	-
Number of Amphibian Species:	4
Number of Ramsar Sites:	1
Number of Wetland-Dependent IBAs:	-
Number of Endemic Bird Areas:	0
Percent Protected Area:	4.6

