

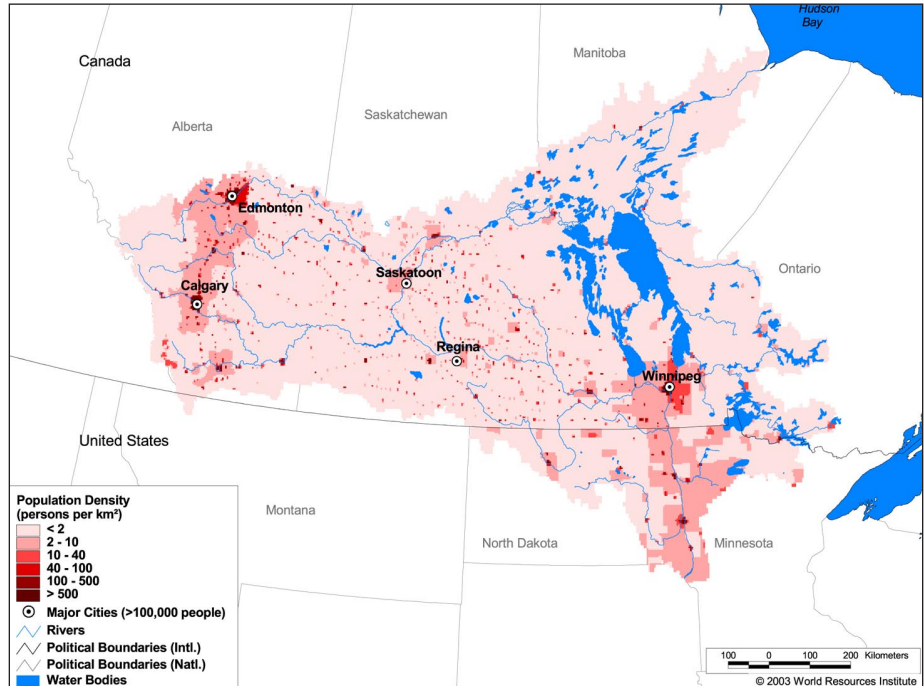
## Land Cover and Use Variables

Percent Forest Cover:	31.9
Percent Grassland, Savanna and Shrubland:	6.1
Percent Wetlands:	86.8
Percent Cropland:	47.4
Percent Irrigated Cropland:	0.5
Percent Dryland Area:	79.9
Percent Urban and Industrial Area:	7.1
Percent Loss of Original Forest Cover:	20.6



### Basin Indicators

Basin Area (sq. km.):	1,093,141
Average Population Density (people per sq. km.):	5
Number of Large Cities (>100,000 people):	5
Water Supply per Person (1995)(m <sup>3</sup> /year):	15,167
Degree of river fragmentation:	High
Number of Dams (>15m high) in Basin:	13
Number of Dams (>150m high) in Basin:	0
Number of Dams (>60m high) under Construction:	0
Number of Dams (>15m high) on Main Stem of River:	8
Number of Dams (>150m high) on Main Stem of River:	0



### Biodiversity Information and Indicators

Number of Fish Species:	47
Number of Fish Endemics:	0
Number of Amphibian Species:	5
Number of Ramsar Sites:	5
Number of Wetland-Dependent IBAs:	-
Number of Endemic Bird Areas:	0
Percent Protected Area:	4.1

