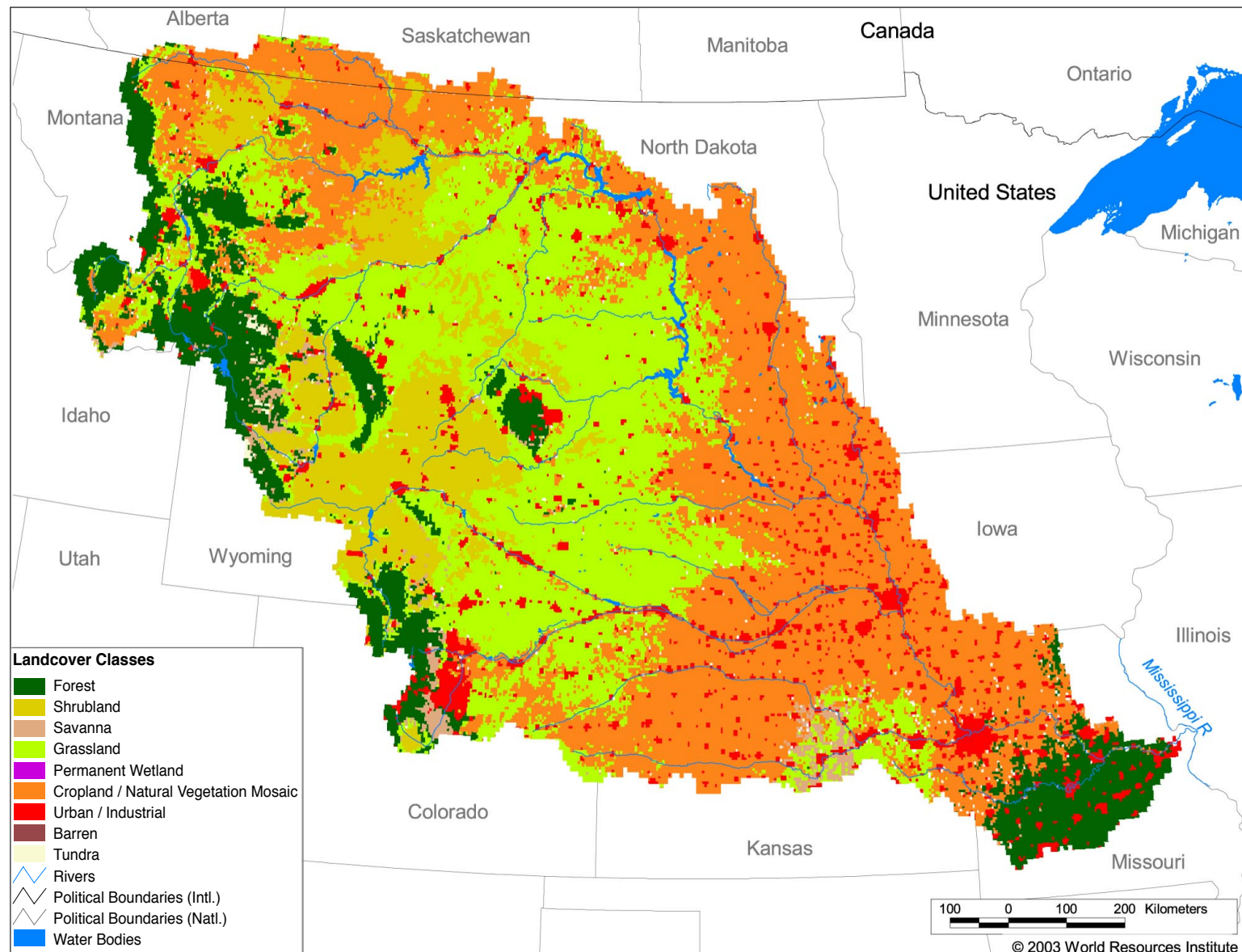


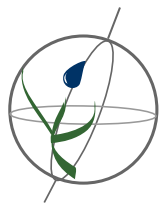
# Watersheds of North and Central America

## NA09 Mississippi I Missouri



### Land Cover and Use Variables

Percent Forest Cover:	11.1
Percent Grassland, Savanna and Shrubland:	30.2
Percent Wetlands:	5.0
Percent Cropland:	36.7
Percent Irrigated Cropland:	6.8
Percent Dryland Area:	-
Percent Urban and Industrial Area:	8.7
Percent Loss of Original Forest Cover:	54.1

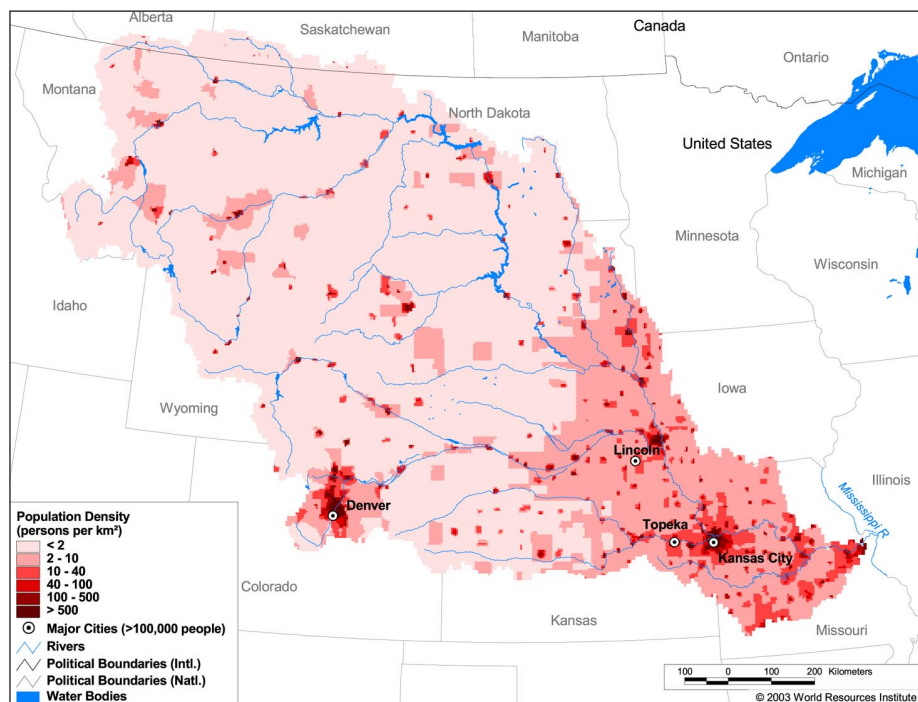


# Watersheds of North and Central America

## NA09 Mississippi I Missouri

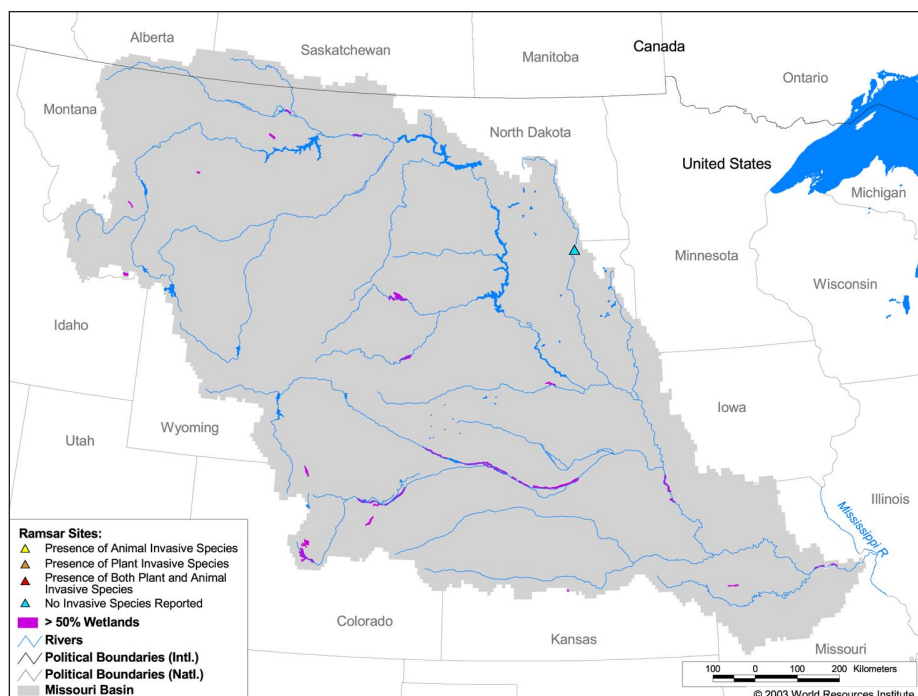
### Basin Indicators

Basin Area (sq. km.):	1,331,810
Average Population Density (people per sq. km.):	8
Number of Large Cities (>100,000 people):	0
Water Supply per Person (1995)(m <sup>3</sup> /year):	4,000-10,000
Degree of river fragmentation:	-
Number of Dams (>15m high) in Basin:	581
Number of Dams (>150m high) in Basin:	35
Number of Dams (>60m high) under Construction:	0
Number of Dams (>15m high) on Main Stem of River:	13
Number of Dams (>150m high) on Main Stem of River:	0



### Biodiversity Information and Indicators

Number of Fish Species:	155
Number of Fish Endemics:	26
Number of Amphibian Species:	19
Number of Ramsar Sites:	1
Number of Wetland-Dependent IBAs:	-
Number of Endemic Bird Areas:	0
Percent Protected Area:	2.6



US Environmental Protection Agency's Missouri River Basin Website: <http://www.epa.gov/msbasin/missouri.htm>