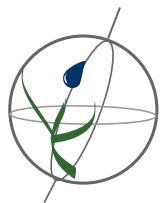


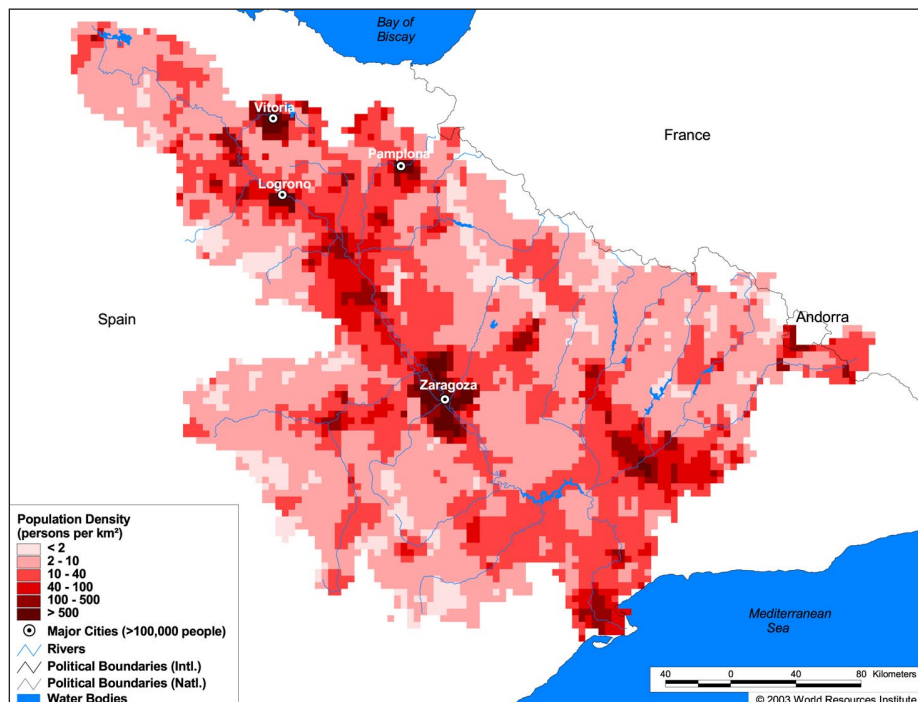
Land Cover and Use Variables

Percent Forest Cover:	5.1
Percent Grassland, Savanna and Shrubland:	22.1
Percent Wetlands:	0.9
Percent Cropland:	58.2
Percent Irrigated Cropland:	10.0
Percent Dryland Area:	65.6
Percent Urban and Industrial Area:	13.7
Percent Loss of Original Forest Cover:	84.8



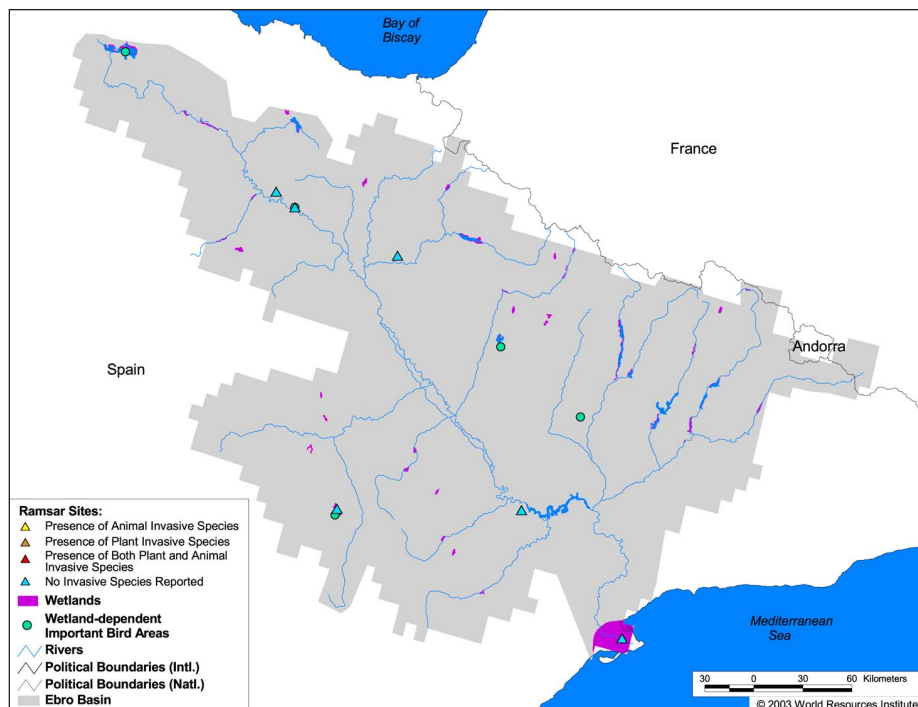
Basin Indicators

Basin Area (sq. km):	82,587
Average Population Density (people per sq. km):	33
Number of Large Cities (>100,000 people):	4
Water Supply per Person (1995)(m ³ /year):	8,235
Degree of River Fragmentation:	High
Number of Dams (>15m high) in Basin:	61
Number of Dams (>150m high) in Basin:	1
Number of Dams (>60m high) under Construction:	5
Number of Dams (>15m high) on Main Stem of River:	8
Number of Dams (>150m high) on Main Stem of River:	0



Biodiversity Information and Indicators

Number of Fish Species:	31
Number of Fish Endemics:	0
Number of Amphibian Species:	21
Number of Ramsar Sites:	6
Number of Wetland-Dependent IBAs:	5
Number of Endemic Bird Areas:	0
Percent Protected Area:	8.2



Ebro Hydrologic Basin Authority: <http://www.chebro.es/>