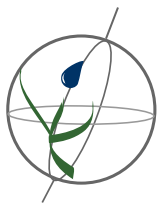


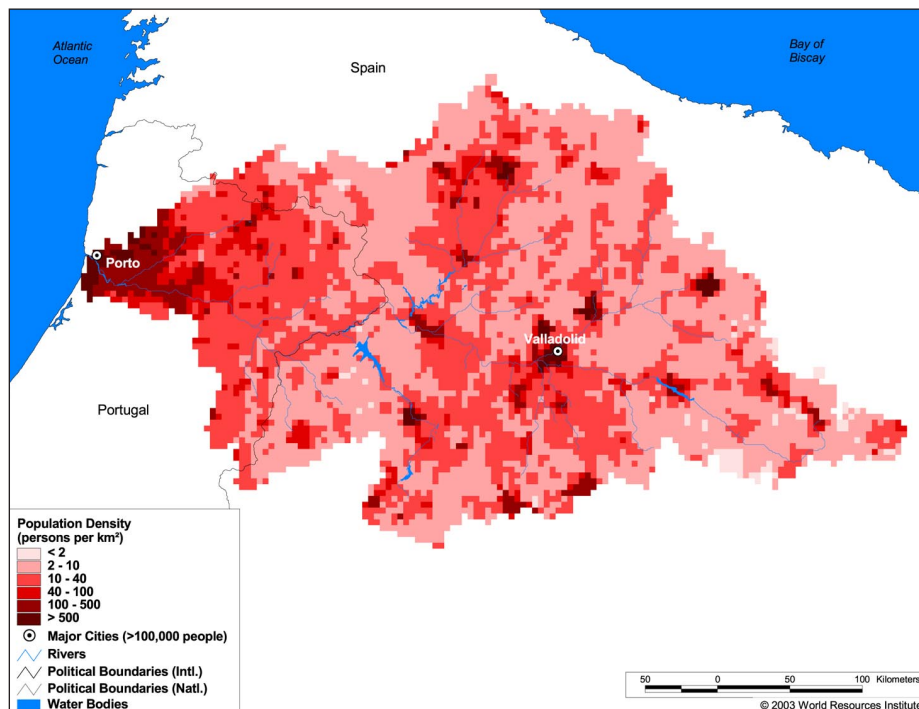
### Land Cover and Use Variables

Percent Forest Cover:	0.6
Percent Grassland, Savanna and Shrubland:	21.5
Percent Wetlands:	0.4
Percent Cropland:	67.4
Percent Irrigated Cropland:	5.6
Percent Dryland Area:	43.2
Percent Urban and Industrial Area:	9.9
Percent Loss of Original Forest Cover:	-



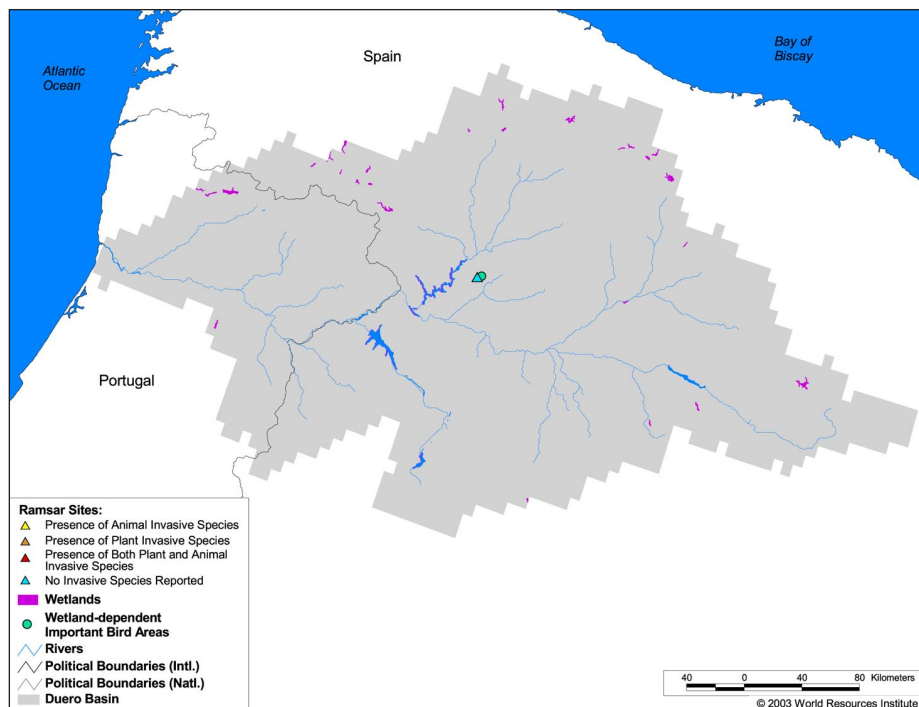
## Basin Indicators

Basin Area (sq. km):	98,258
Average Population Density (people per sq. km):	42
Number of Large Cities (>100,000 people):	2
Water Supply per Person (1995)(m <sup>3</sup> /year):	4,093
Degree of River Fragmentation:	High
Number of Dams (>15m high) in Basin:	61
Number of Dams (>150m high) in Basin:	1
Number of Dams (>60m high) under Construction:	2
Number of Dams (>15m high) on Main Stem of River:	17
Number of Dams (>150m high) on Main Stem of River:	0



## Biodiversity Information and Indicators

Number of Fish Species:	-
Number of Fish Endemics:	-
Number of Amphibian Species:	19
Number of Ramsar Sites:	1
Number of Wetland-Dependent IBAs:	1
Number of Endemic Bird Areas:	-
Percent Protected Area:	-



Duero Hydrologic Basin Authority: <http://www.chduero.es/Webcorp/Blini/default.htm>