

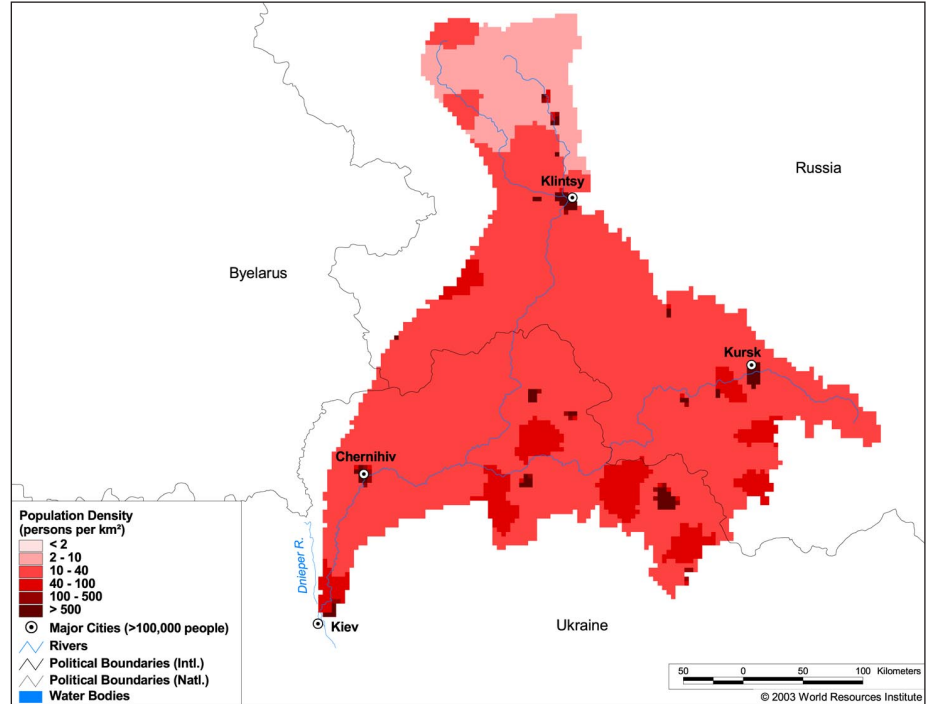
Land Cover and Use Variables

Percent Forest Cover:	3.0
Percent Grassland, Savanna and Shrubland:	0.0
Percent Wetlands:	6.0
Percent Cropland:	88.0
Percent Irrigated Cropland:	0.0
Percent Dryland Area:	-
Percent Urban and Industrial Area:	9.0
Percent Loss of Original Forest Cover:	87.0



Basin Indicators

Basin Area (sq. km):	97,293
Average Population Density (people per sq. km):	51
Number of Large Cities (>100,000 people):	4
Water Supply per Person (1995)(m ³ /year):	1,000-1,700
Degree of River Fragmentation:	-
Number of Dams (>15m high) in Basin:	-
Number of Dams (>150m high) in Basin:	-
Number of Dams (>60m high) under Construction:	0
Number of Dams (>15m high) on Main Stem of River:	0
Number of Dams (>150m high) on Main Stem of River:	0



Biodiversity Information and Indicators

Number of Fish Species:	40
Number of Fish Endemics:	0
Number of Amphibian Species:	2
Number of Ramsar Sites:	0
Number of Wetland-Dependent IBAs:	7
Number of Endemic Bird Areas:	0
Percent Protected Area:	1.0

