

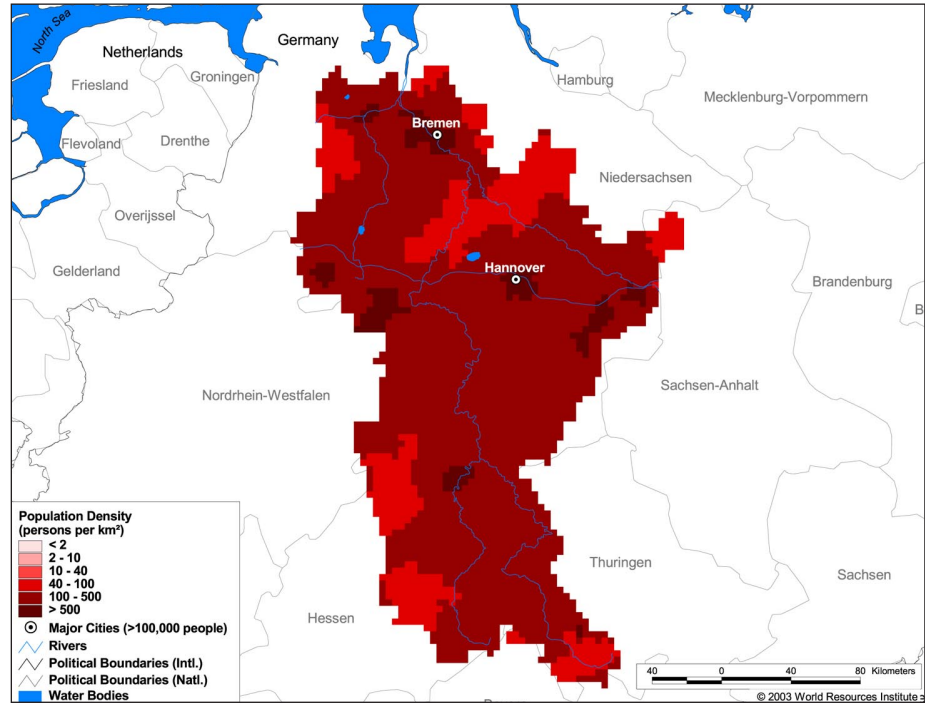
Land Cover and Use Variables

Percent Forest Cover:	1.8
Percent Grassland, Savanna and Shrubland:	1.0
Percent Wetlands:	0.1
Percent Cropland:	78.7
Percent Irrigated Cropland:	1.7
Percent Dryland Area:	0.0
Percent Urban and Industrial Area:	18.3
Percent Loss of Original Forest Cover:	78.2



Basin Indicators

Basin Area (sq. km):	45,138
Average Population Density (people per sq. km):	203
Number of Large Cities (>100,000 people):	2
Water Supply per Person (1995)(m ³ /year):	1,567
Degree of River Fragmentation:	High
Number of Dams (>15m high) in Basin:	8
Number of Dams (>150m high) in Basin:	0
Number of Dams (>60m high) under Construction:	0
Number of Dams (>15m high) on Main Stem of River:	0
Number of Dams (>150m high) on Main Stem of River:	0



Biodiversity Information and Indicators

Number of Fish Species:	48
Number of Fish Endemics:	0
Number of Amphibian Species:	19
Number of Ramsar Sites:	4
Number of Wetland-Dependent IBAs:	7
Number of Endemic Bird Areas:	0
Percent Protected Area:	18.5

