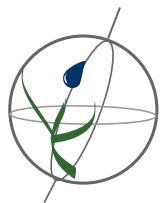


Land Cover and Use Variables

Percent Forest Cover:	7.2
Percent Grassland, Savanna and Shrubland:	0.0
Percent Wetlands:	3.4
Percent Cropland:	84.8
Percent Irrigated Cropland:	0.2
Percent Dryland Area:	0.0
Percent Urban and Industrial Area:	5.5
Percent Loss of Original Forest Cover:	76.4

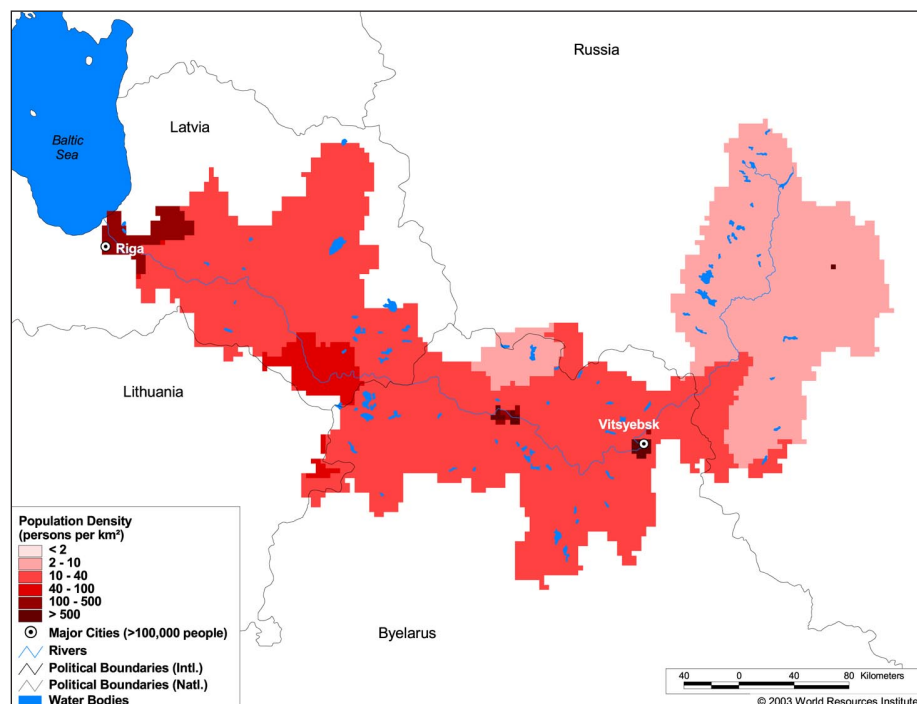


Watersheds of Europe

E03 West Dvina (Daugava)

Basin Indicators

Basin Area (sq. km):	79,389
Average Population Density (people per sq. km):	28
Number of Large Cities (>100,000 people):	2
Water Supply per Person (1995)(m ³ /year):	6,626
Degree of River Fragmentation:	High
Number of Dams (>15m high) in Basin:	-
Number of Dams (>150m high) in Basin:	-
Number of Dams (>60m high) under Construction:	0
Number of Dams (>15m high) on Main Stem of River:	5
Number of Dams (>150m high) on Main Stem of River:	0



Biodiversity Information and Indicators

Number of Fish Species:	50
Number of Fish Endemics:	0
Number of Amphibian Species:	2
Number of Ramsar Sites:	1
Number of Wetland-Dependent IBAs:	10
Number of Endemic Bird Areas:	0
Percent Protected Area:	3.0

