

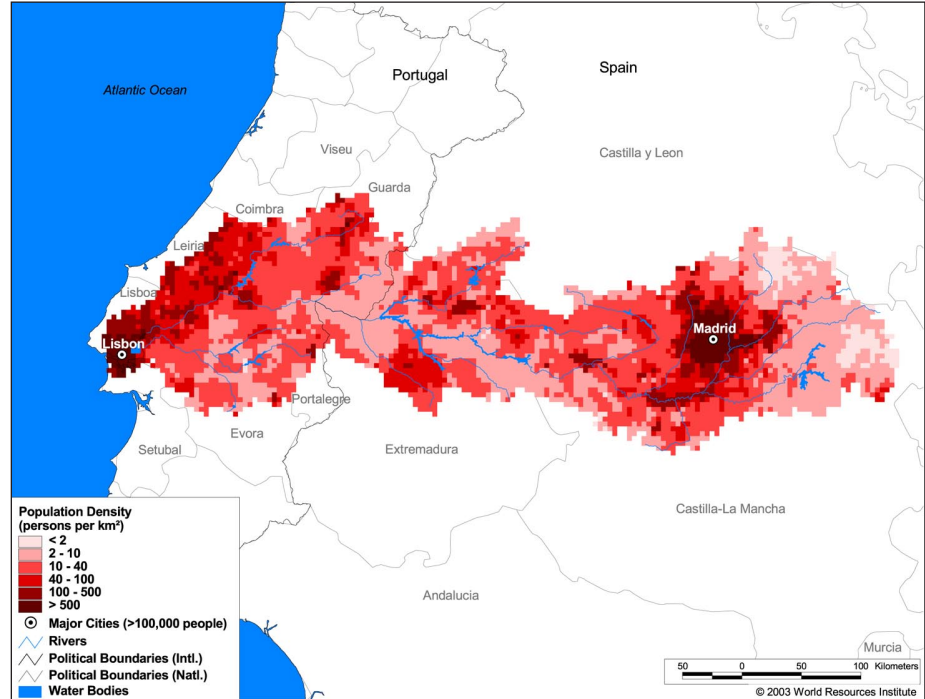
Land Cover and Use Variables

Percent Forest Cover:	0.1
Percent Grassland, Savanna and Shrubland:	34.8
Percent Wetlands:	1.6
Percent Cropland:	46.8
Percent Irrigated Cropland:	5.2
Percent Dryland Area:	55.2
Percent Urban and Industrial Area:	16.6
Percent Loss of Original Forest Cover:	88.9



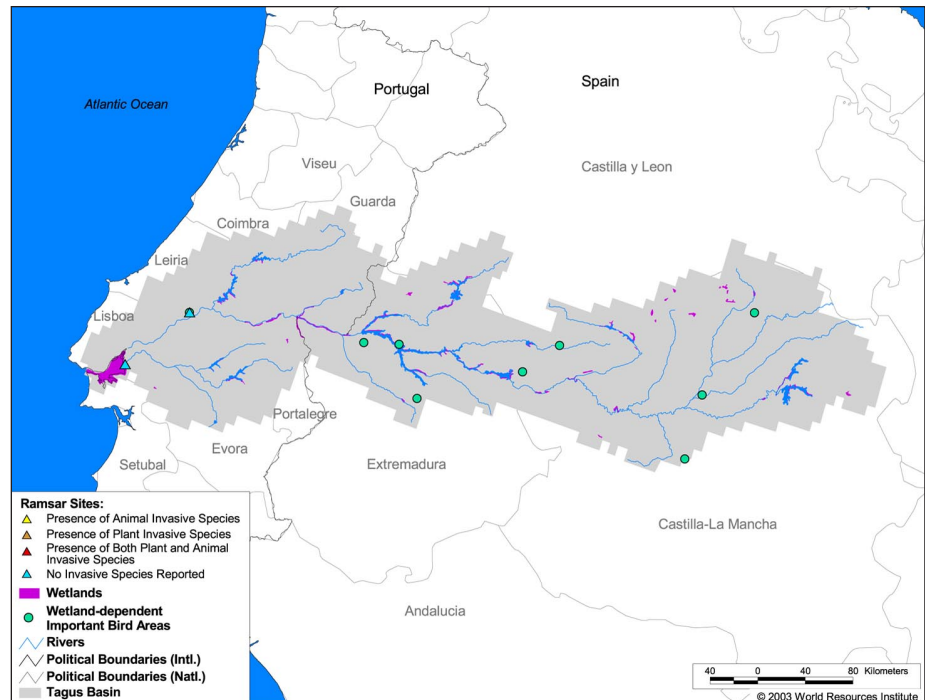
Basin Indicators

Basin Area (sq. km):	78,467
Average Population Density (people per sq. km):	122
Number of Large Cities (>100,000 people):	2
Water Supply per Person (1995)(m ³ /year):	2,248
Degree of River Fragmentation:	High
Number of Dams (>15m high) in Basin:	52
Number of Dams (>150m high) in Basin:	0
Number of Dams (>60m high) under Construction:	0
Number of Dams (>15m high) on Main Stem of River:	12
Number of Dams (>150m high) on Main Stem of River:	0



Biodiversity Information and Indicators

Number of Fish Species:	39
Number of Fish Endemics:	0
Number of Amphibian Species:	17
Number of Ramsar Sites:	2
Number of Wetland-Dependent IBAs:	9
Number of Endemic Bird Areas:	0
Percent Protected Area:	4.3



Tajo Hydrologic Basin Authority (Spain): <http://www.chtajo.es/>