

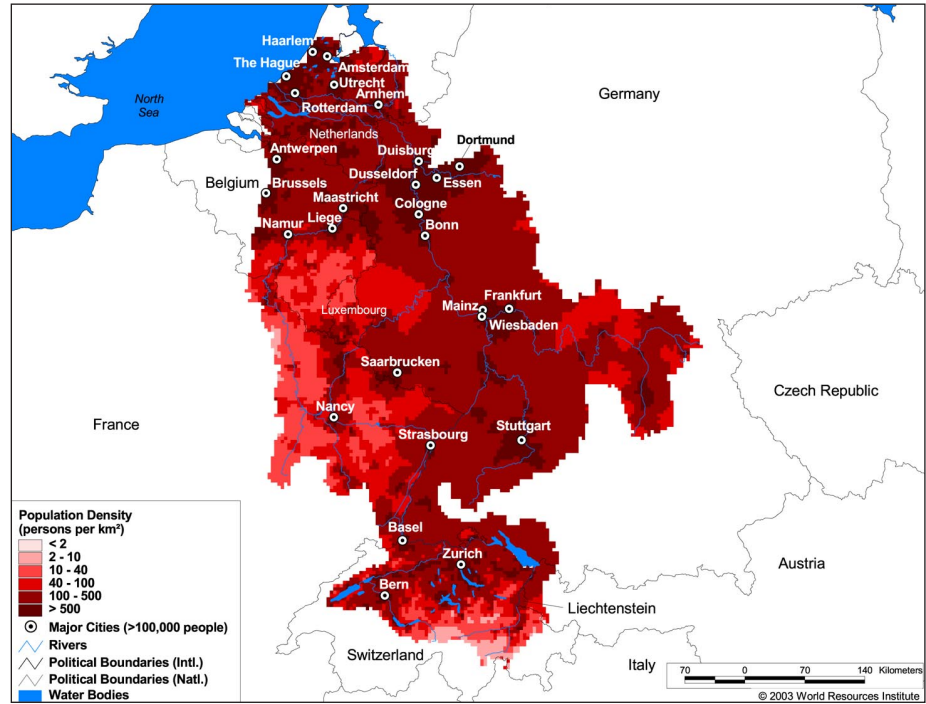
Land Cover and Use Variables

Percent Forest Cover:	6.8
Percent Grassland, Savanna and Shrubland:	1.4
Percent Wetlands:	1.0
Percent Cropland:	64.7
Percent Irrigated Cropland:	3.3
Percent Dryland Area:	0.0
Percent Urban and Industrial Area:	25.7
Percent Loss of Original Forest Cover:	71.1



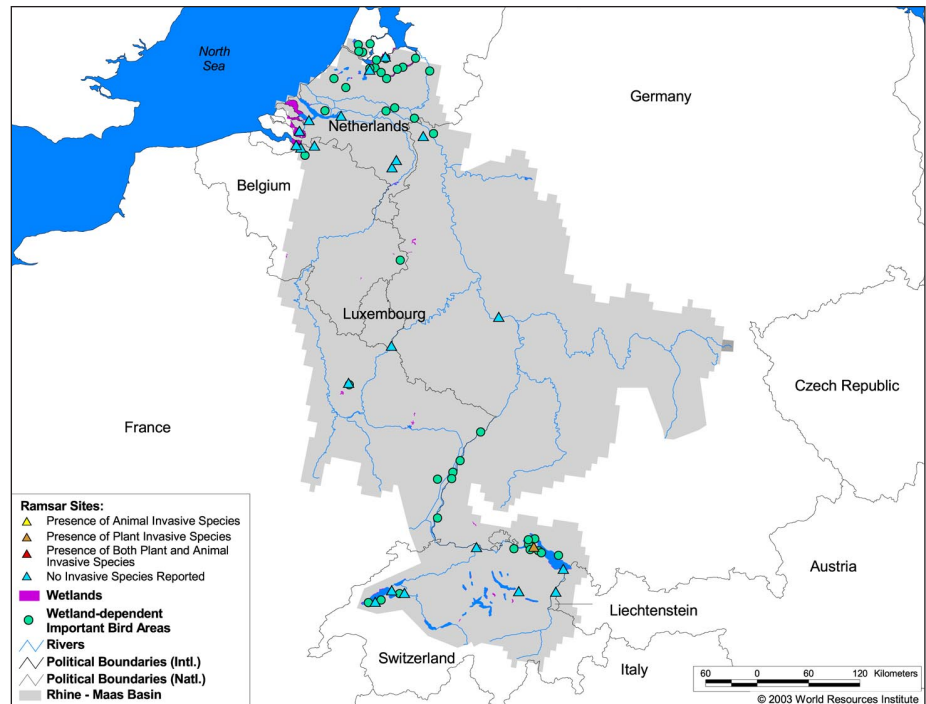
Basin Indicators

Basin Area (sq. km):	198,735
Average Population Density (people per sq. km):	319
Number of Large Cities (>100,000 people):	27
Water Supply per Person (1995)(m ³ /year):	1,396
Degree of River Fragmentation:	Medium
Number of Dams (>15m high) in Basin:	29
Number of Dams (>150m high) in Basin:	0
Number of Dams (>60m high) under Construction:	0
Number of Dams (>15m high) on Main Stem of River:	9
Number of Dams (>150m high) on Main Stem of River:	0



Biodiversity Information and Indicators

Number of Fish Species:	60
Number of Fish Endemics:	0
Number of Amphibian Species:	21
Number of Ramsar Sites:	22
Number of Wetland-Dependent IBAs:	41
Number of Endemic Bird Areas:	0
Percent Protected Area:	18.0



International Commission for the Protection of the Rhine (ICPR): <http://www.iksr.org>
 Commission Internationale pour la Protection de la Meuse (CIPM): <http://cipm-icbm.be>
 Rhine-Meuse Water Authority (France): <http://www.eau-rhin-meuse.fr>