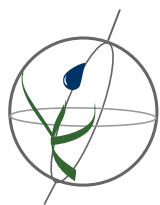
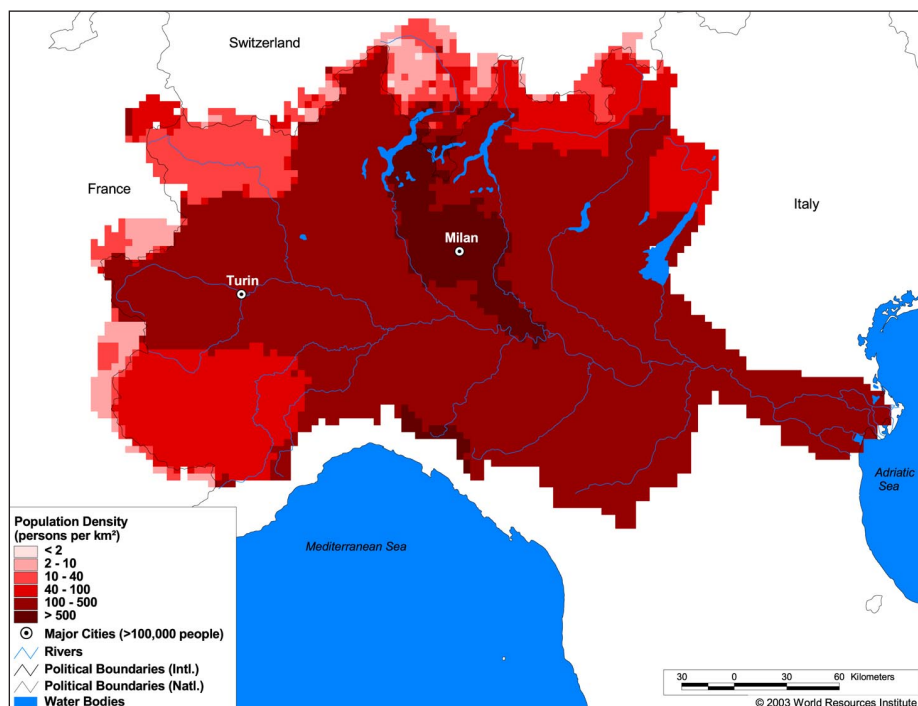


Land Cover and Use Variables

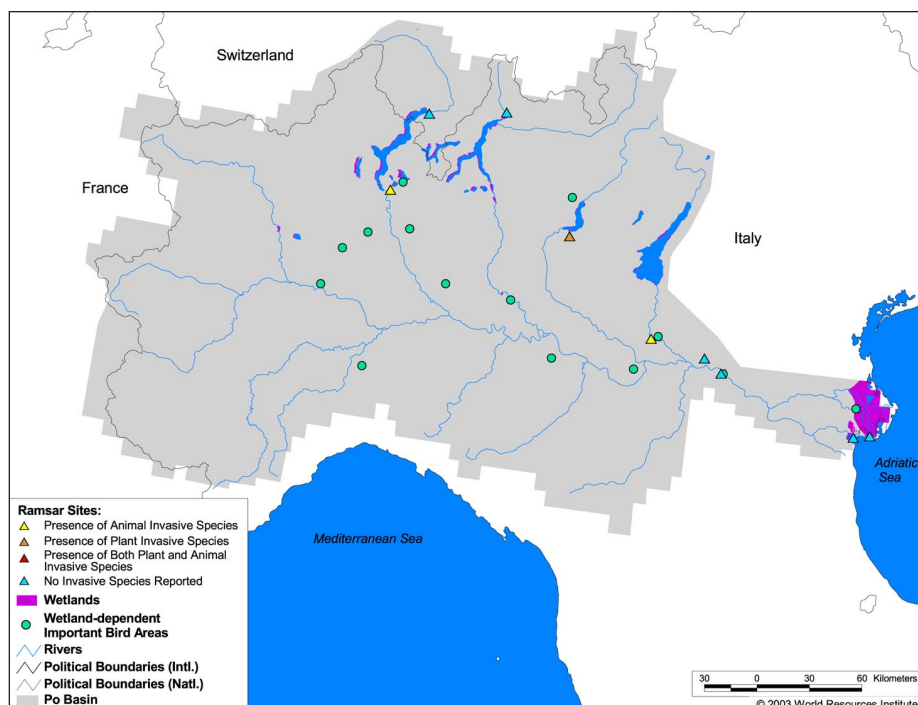
Percent Forest Cover:	13.0
Percent Grassland, Savanna and Shrubland:	12.7
Percent Wetlands:	1.8
Percent Cropland:	50.2
Percent Irrigated Cropland:	16.2
Percent Dryland Area:	0.0
Percent Urban and Industrial Area:	20.0
Percent Loss of Original Forest Cover:	80.5

**Basin Indicators**

Basin Area (sq. km):	76,997
Average Population Density (people per sq. km):	217
Number of Large Cities (>100,000 people):	2
Water Supply per Person (1995)(m ³ /year):	2,731
Degree of River Fragmentation:	-
Number of Dams (>15m high) in Basin:	30
Number of Dams (>150m high) in Basin:	0
Number of Dams (>60m high) under Construction:	1
Number of Dams (>15m high) on Main Stem of River:	1
Number of Dams (>150m high) on Main Stem of River:	0

**Biodiversity Information and Indicators**

Number of Fish Species:	47
Number of Fish Endemics:	0
Number of Amphibian Species:	28
Number of Ramsar Sites:	9
Number of Wetland-Dependent IBAs:	14
Number of Endemic Bird Areas:	0
Percent Protected Area:	9.1

Po River Basin Authority: <http://www.adbpo.it/inglese/testouk.html>