

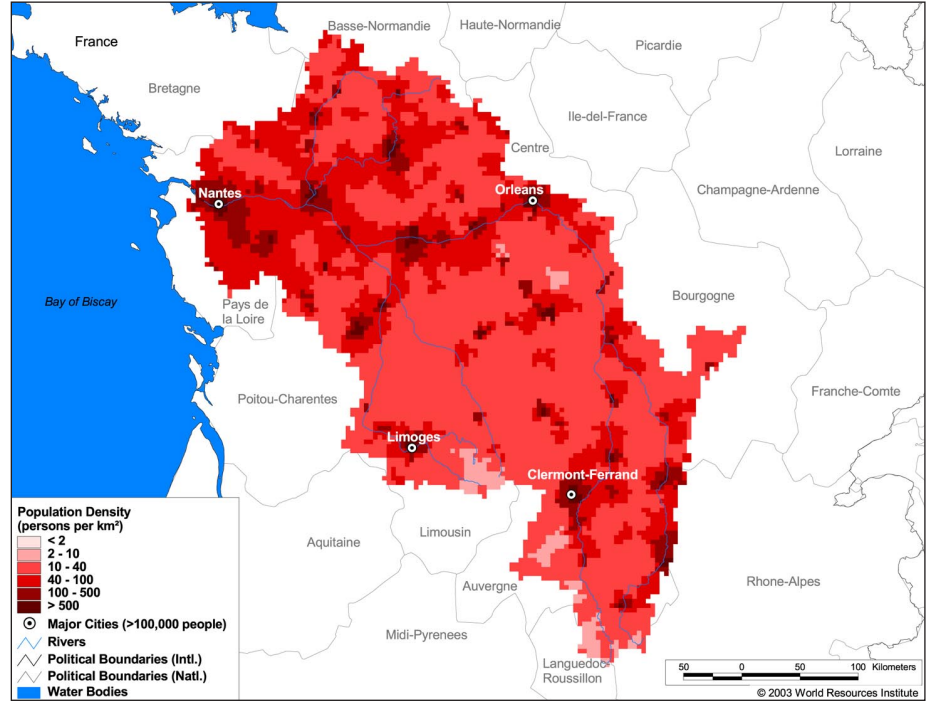
Land Cover and Use Variables

Percent Forest Cover:	1.6
Percent Grassland, Savanna and Shrubland:	0.1
Percent Wetlands:	0.9
Percent Cropland:	83.7
Percent Irrigated Cropland:	0.7
Percent Dryland Area:	0.0
Percent Urban and Industrial Area:	14.3
Percent Loss of Original Forest Cover:	89.4



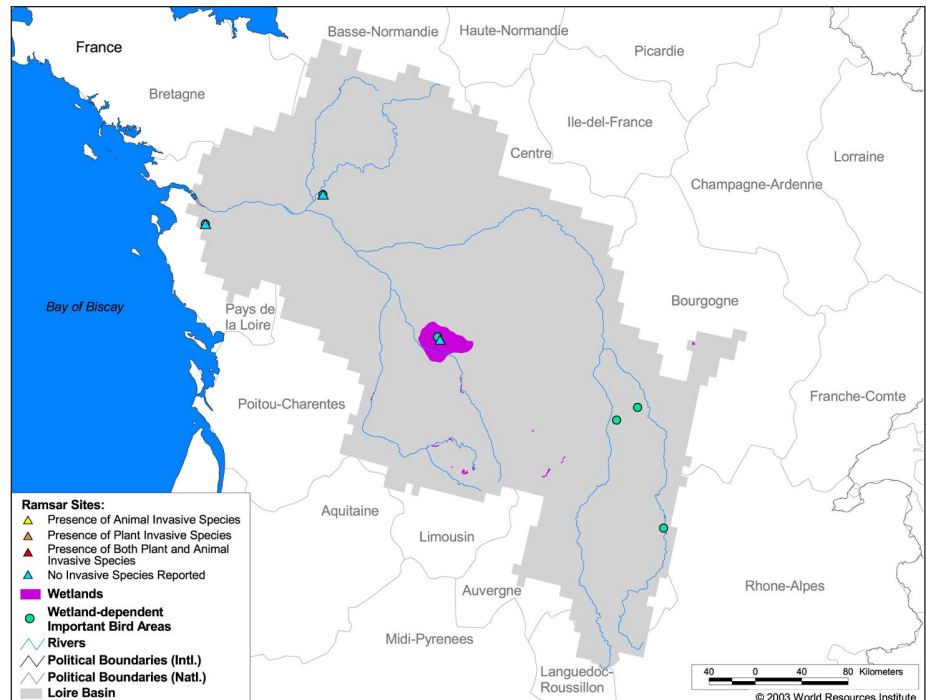
Basin Indicators

Basin Area (sq. km):	115,282
Average Population Density (people per sq. km):	63
Number of Large Cities (>100,000 people):	4
Water Supply per Person (1995)(m ³ /year):	3,386
Degree of River Fragmentation:	Medium
Number of Dams (>15m high) in Basin:	18
Number of Dams (>150m high) in Basin:	0
Number of Dams (>60m high) under Construction:	0
Number of Dams (>15m high) on Main Stem of River:	3
Number of Dams (>150m high) on Main Stem of River:	0



Biodiversity Information and Indicators

Number of Fish Species:	43
Number of Fish Endemics:	0
Number of Amphibian Species:	21
Number of Ramsar Sites:	3
Number of Wetland-Dependent IBAs:	6
Number of Endemic Bird Areas:	0
Percent Protected Area:	9.8



Loire-Brittany Water Authority: <http://www.eau-loire-bretagne.fr>