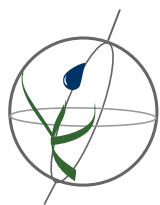


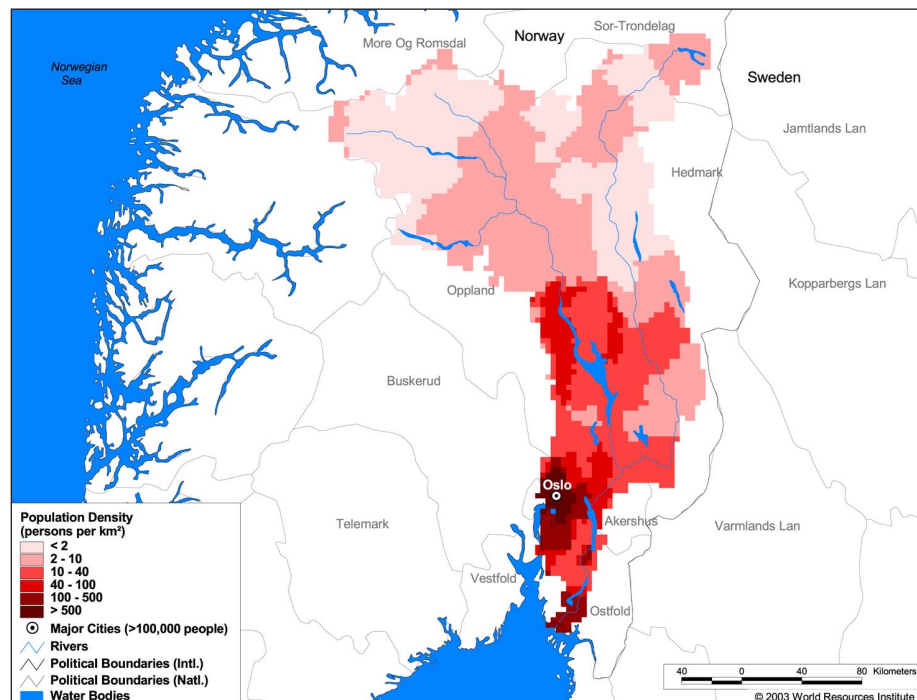
### Land Cover and Use Variables

Percent Forest Cover:	46.0
Percent Grassland, Savanna and Shrubland:	25.0
Percent Wetlands:	1.8
Percent Cropland:	1.3
Percent Irrigated Cropland:	0.7
Percent Dryland Area:	0.0
Percent Urban and Industrial Area:	15.4
Percent Loss of Original Forest Cover:	5.9



### Basin Indicators

Basin Area (sq. km):	41,795
Average Population Density (people per sq. km):	29
Number of Large Cities (>100,000 people):	1
Water Supply per Person (1995)(m <sup>3</sup> /year):	17,907
Degree of River Fragmentation:	High
Number of Dams (>15m high) in Basin:	7
Number of Dams (>150m high) in Basin:	0
Number of Dams (>60m high) under Construction:	0
Number of Dams (>15m high) on Main Stem of River:	4
Number of Dams (>150m high) on Main Stem of River:	0



### Biodiversity Information and Indicators

Number of Fish Species:	31
Number of Fish Endemics:	0
Number of Amphibian Species:	5
Number of Ramsar Sites:	4
Number of Wetland-Dependent IBAs:	4
Number of Endemic Bird Areas:	0
Percent Protected Area:	4.2

