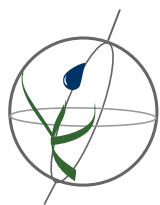
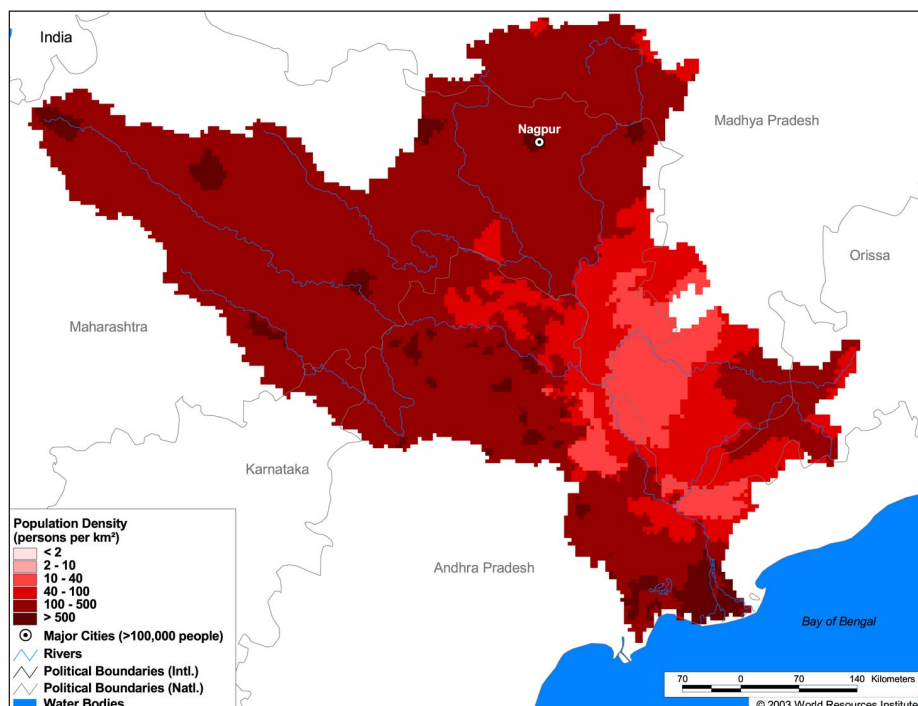


**Land Cover and Use Variables**

Percent Forest Cover:	6.8
Percent Grassland, Savanna and Shrubland:	22.5
Percent Wetlands:	1.2
Percent Cropland:	64.0
Percent Irrigated Cropland:	11.7
Percent Dryland Area:	88.6
Percent Urban and Industrial Area:	6.7
Percent Loss of Original Forest Cover:	76.9

**Basin Indicators**

Basin Area (sq. km):	319,810
Average Population Density (people per sq. km):	202
Number of Large Cities (>100,000 people):	1
Water Supply per Person (1995)(m <sup>3</sup> /year):	1,602
Degree of River Fragmentation:	-
Number of Dams (>15m high) in Basin:	17
Number of Dams (>150m high) in Basin:	0
Number of Dams (>60m high) under Construction:	0
Number of Dams (>15m high) on Main Stem of River:	5
Number of Dams (>150m high) on Main Stem of River:	0

**Biodiversity Information and Indicators**

Number of Fish Species:	-
Number of Fish Endemics:	-
Number of Amphibian Species:	26
Number of Ramsar Sites:	0
Number of Wetland-Dependent IBAs:	-
Number of Endemic Bird Areas:	0
Percent Protected Area:	3.5

