

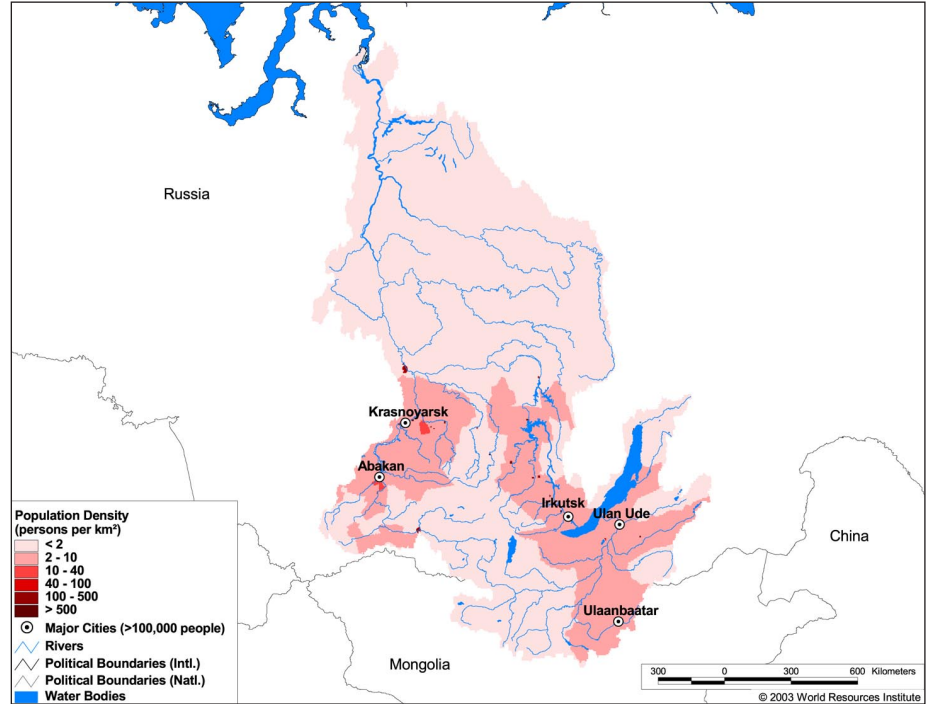
Land Cover and Use Variables

Percent Forest Cover:	39.7
Percent Grassland, Savanna and Shrubland:	32.4
Percent Wetlands:	2.7
Percent Cropland:	12.8
Percent Irrigated Cropland:	0.0
Percent Dryland Area:	16.8
Percent Urban and Industrial Area:	1.3
Percent Loss of Original Forest Cover:	18.1



Basin Indicators

Basin Area (sq. km):	2,554,388
Average Population Density (people per sq. km):	3
Number of Large Cities (>100,000 people):	5
Water Supply per Person (1995)(m ³ /year):	79,083
Degree of River Fragmentation:	High
Number of Dams (>15m high) in Basin:	11
Number of Dams (>150m high) in Basin:	1
Number of Dams (>60m high) under Construction:	1
Number of Dams (>15m high) on Main Stem of River:	3
Number of Dams (>150m high) on Main Stem of River:	1



Biodiversity Information and Indicators

Number of Fish Species:	42
Number of Fish Endemics:	2
Number of Amphibian Species:	-
Number of Ramsar Sites:	4
Number of Wetland-Dependent IBAs:	-
Number of Endemic Bird Areas:	0
Percent Protected Area:	3.3

