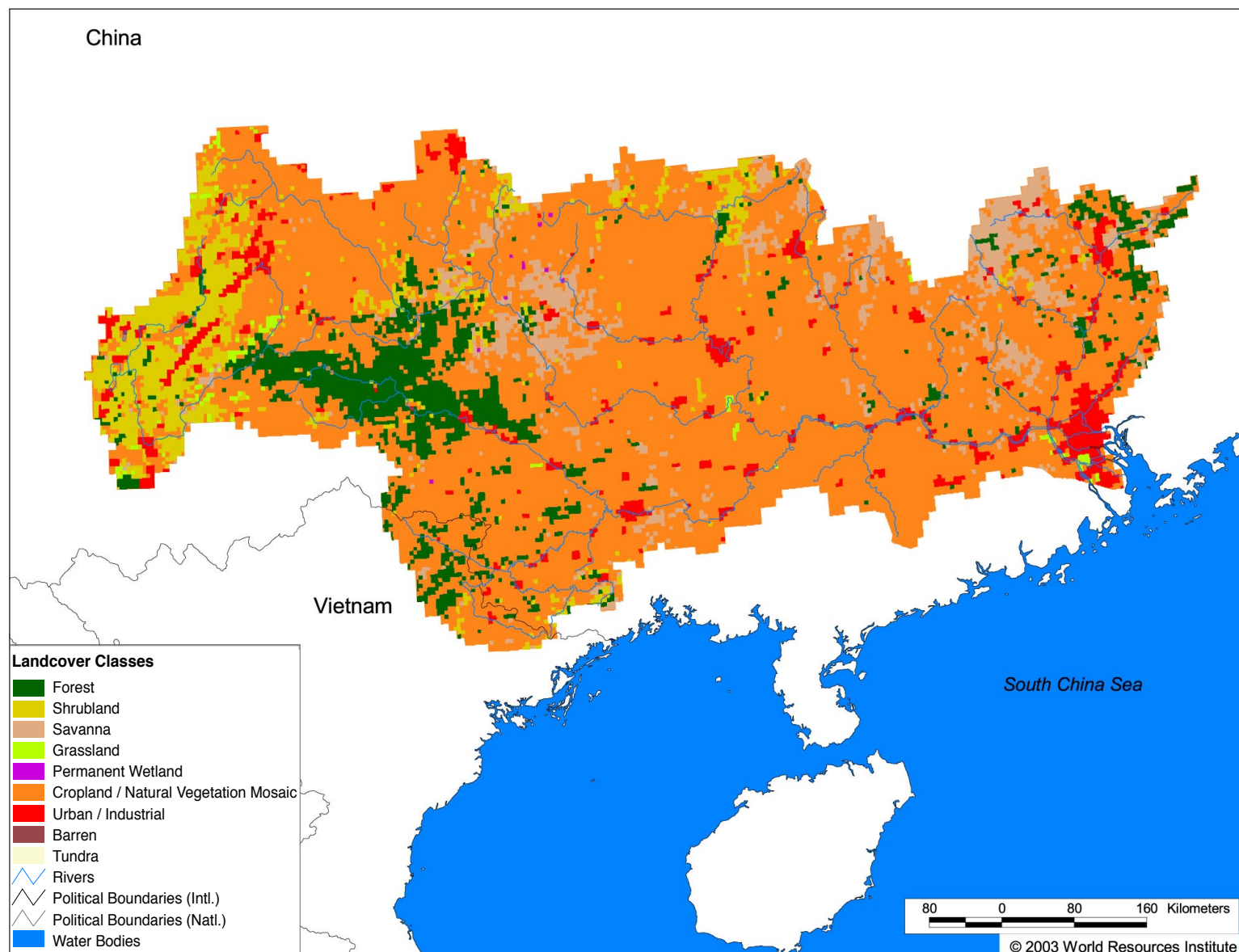


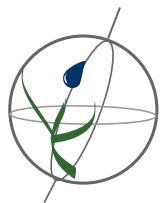
Watersheds of Asia and Oceania

AS27 Xun Jiang (Pearl River)



Land Cover and Use Variables

Percent Forest Cover:	9.6
Percent Grassland, Savanna and Shrubland:	6.1
Percent Wetlands:	1.3
Percent Cropland:	66.5
Percent Irrigated Cropland:	5.2
Percent Dryland Area:	0.0
Percent Urban and Industrial Area:	5.3
Percent Loss of Original Forest Cover:	80.4

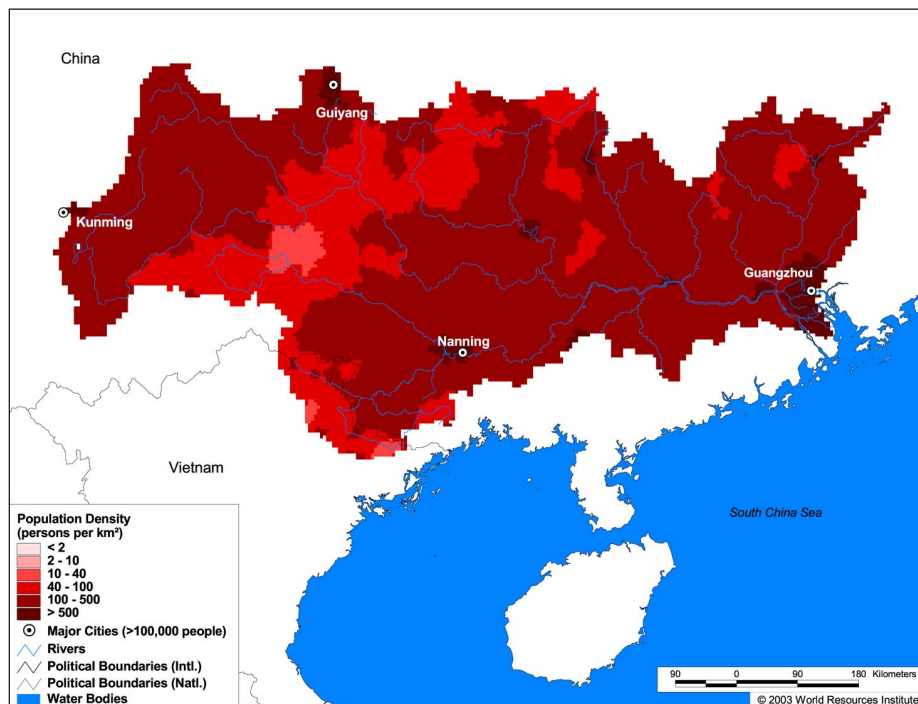


Watersheds of Asia and Oceania

AS27 Xun Jiang (Pearl River)

Basin Indicators

Basin Area (sq. km):	409,480
Average Population Density (people per sq. km):	194
Number of Large Cities (>100,000 people):	4
Water Supply per Person (1995)(m ³ /year):	3,169
Degree of River Fragmentation:	-
Number of Dams (>15m high) in Basin:	31
Number of Dams (>150m high) in Basin:	2
Number of Dams (>60m high) under Construction:	10
Number of Dams (>15m high) on Main Stem of River:	4
Number of Dams (>150m high) on Main Stem of River:	0



Biodiversity Information and Indicators

Number of Fish Species:	280-300
Number of Fish Endemics:	120
Number of Amphibian Species:	127
Number of Ramsar Sites:	0
Number of Wetland-Dependent IBAs:	-
Number of Endemic Bird Areas:	4
Percent Protected Area:	1.1

