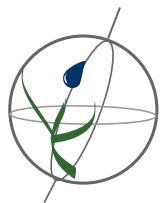


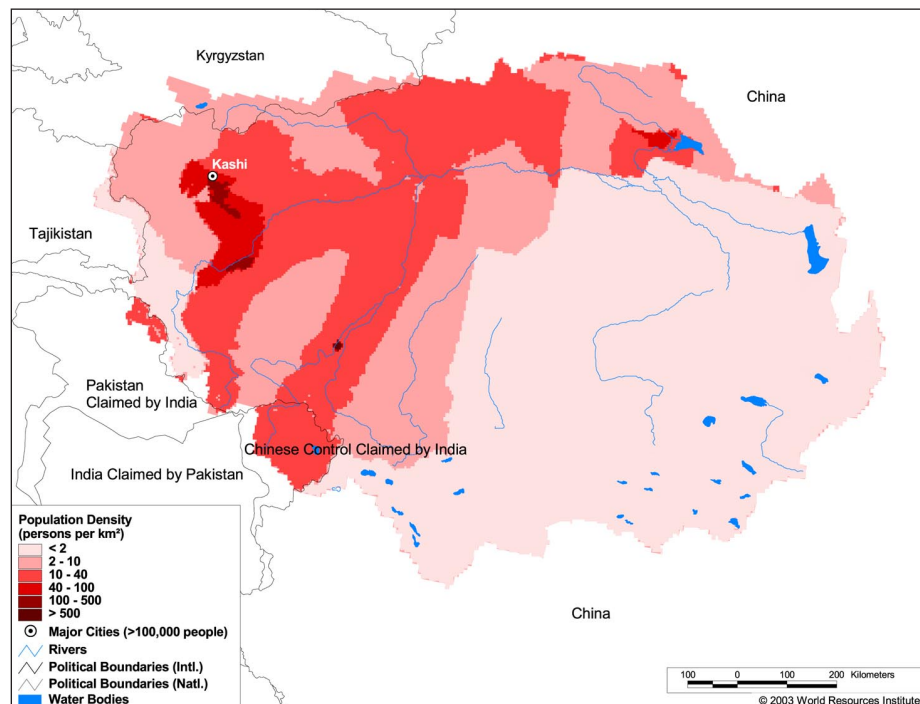
Land Cover and Use Variables

Percent Forest Cover:	0.0
Percent Grassland, Savanna and Shrubland:	35.3
Percent Wetlands:	16.3
Percent Cropland:	2.3
Percent Irrigated Cropland:	0.6
Percent Dryland Area:	38.6
Percent Urban and Industrial Area:	0.3
Percent Loss of Original Forest Cover:	69.3



Basin Indicators

Basin Area (sq. km):	1,152,448
Average Population Density (people per sq. km):	7
Number of Large Cities (>100,000 people):	1
Water Supply per Person (1995)(m ³ /year):	754
Degree of River Fragmentation:	High
Number of Dams (>15m high) in Basin:	0
Number of Dams (>150m high) in Basin:	0
Number of Dams (>60m high) under Construction:	0
Number of Dams (>15m high) on Main Stem of River:	0
Number of Dams (>150m high) on Main Stem of River:	0



Biodiversity Information and Indicators

Number of Fish Species:	14
Number of Fish Endemics:	3
Number of Amphibian Species:	7
Number of Ramsar Sites:	0
Number of Wetland-Dependent IBAs:	-
Number of Endemic Bird Areas:	1
Percent Protected Area:	20.9

