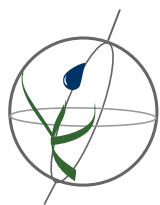


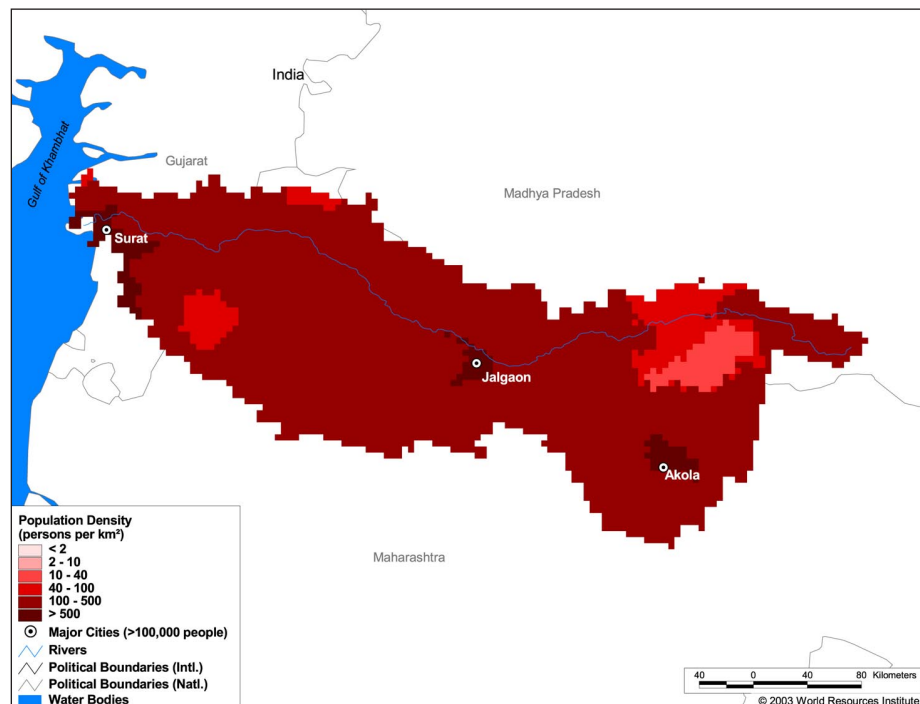
## Land Cover and Use Variables

Percent Forest Cover:	0.2
Percent Grassland, Savanna and Shrubland:	14.7
Percent Wetlands:	0.8
Percent Cropland:	78.3
Percent Irrigated Cropland:	13.3
Percent Dryland Area:	99.6
Percent Urban and Industrial Area:	7.6
Percent Loss of Original Forest Cover:	61.0



### Basin Indicators

Basin Area (sq. km):	74,627
Average Population Density (people per sq. km):	240
Number of Large Cities (>100,000 people):	0
Water Supply per Person (1995)(m <sup>3</sup> /year):	1,107
Degree of River Fragmentation:	-
Number of Dams (>15m high) in Basin:	5
Number of Dams (>150m high) in Basin:	0
Number of Dams (>60m high) under Construction:	1
Number of Dams (>15m high) on Main Stem of River:	1
Number of Dams (>150m high) on Main Stem of River:	0



### Biodiversity Information and Indicators

Number of Fish Species:	-
Number of Fish Endemics:	-
Number of Amphibian Species:	16
Number of Ramsar Sites:	0
Number of Wetland-Dependent IBAs:	-
Number of Endemic Bird Areas:	0
Percent Protected Area:	4.0

