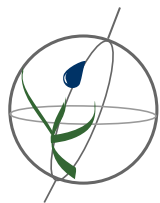


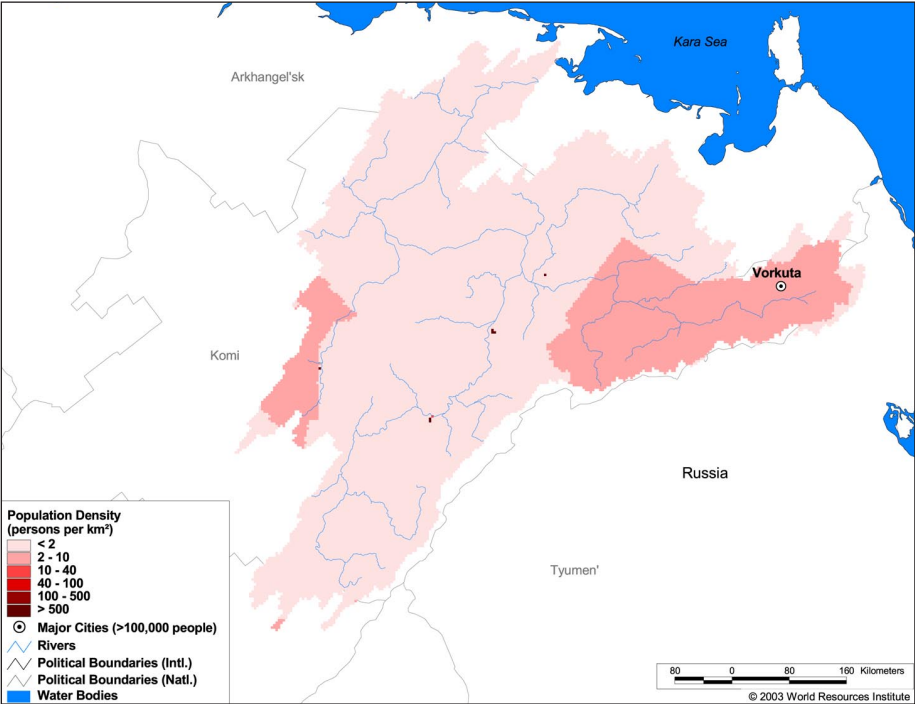
Land Cover and Use Variables

Percent Forest Cover:	49.5
Percent Grassland, Savanna and Shrubland:	45.1
Percent Wetlands:	5.0
Percent Cropland:	0.2
Percent Irrigated Cropland:	0.0
Percent Dryland Area:	0.0
Percent Urban and Industrial Area:	1.2
Percent Loss of Original Forest Cover:	-



Basin Indicators

Basin Area (sq. km):	289,532
Average Population Density (people per sq. km):	2
Number of Large Cities (>100,000 people):	1
Water Supply per Person (1995)(m ³ /year):	215,057
Degree of River Fragmentation:	Low
Number of Dams (>15m high) in Basin:	-
Number of Dams (>150m high) in Basin:	-
Number of Dams (>60m high) under Construction:	0
Number of Dams (>15m high) on Main Stem of River:	-
Number of Dams (>150m high) on Main Stem of River:	-



Biodiversity Information and Indicators

Number of Fish Species:	-
Number of Fish Endemics:	-
Number of Amphibian Species:	-
Number of Ramsar Sites:	0
Number of Wetland-Dependent IBAs:	3
Number of Endemic Bird Areas:	-
Percent Protected Area:	-

