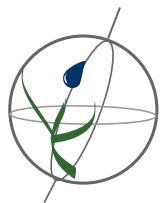


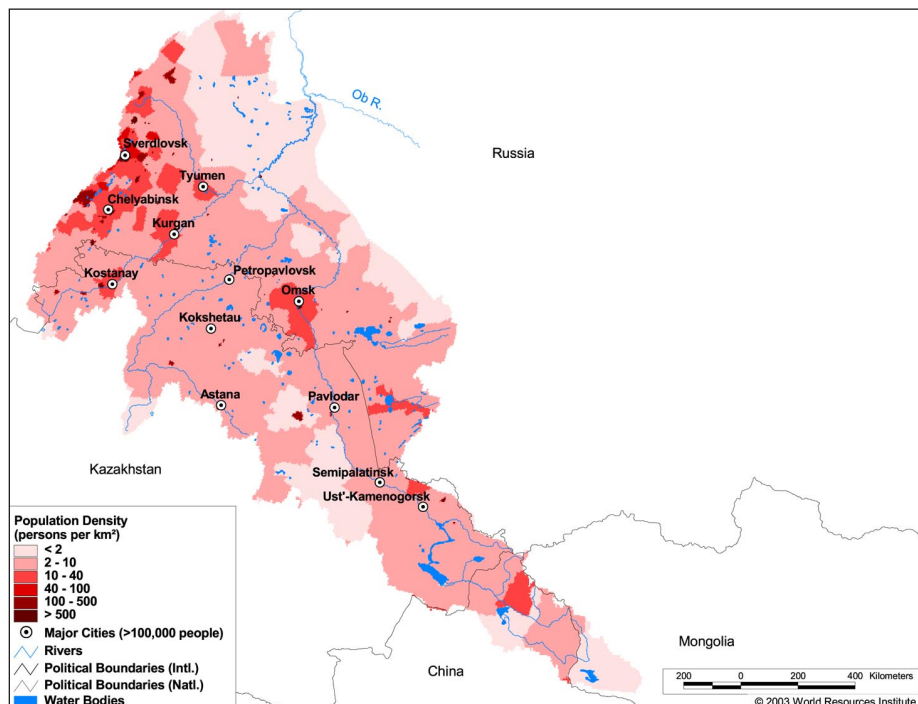
Land Cover and Use Variables

Percent Forest Cover:	17.0
Percent Grassland, Savanna and Shrubland:	14.0
Percent Wetlands:	7.7
Percent Cropland:	51.4
Percent Irrigated Cropland:	3.0
Percent Dryland Area:	-
Percent Urban and Industrial Area:	5.4
Percent Loss of Original Forest Cover:	52.0



Basin Indicators

Basin Area (sq. km):	1,673,470
Average Population Density (people per sq. km):	11
Number of Large Cities (>100,000 people):	12
Water Supply per Person (1995)(m ³ /year):	>10,000
Degree of River Fragmentation:	-
Number of Dams (>15m high) in Basin:	-
Number of Dams (>150m high) in Basin:	-
Number of Dams (>60m high) under Construction:	0
Number of Dams (>15m high) on Main Stem of River:	3
Number of Dams (>150m high) on Main Stem of River:	0



Biodiversity Information and Indicators

Number of Fish Species:	-
Number of Fish Endemics:	-
Number of Amphibian Species:	-
Number of Ramsar Sites:	3
Number of Wetland-Dependent IBAs:	-
Number of Endemic Bird Areas:	0
Percent Protected Area:	1.4

