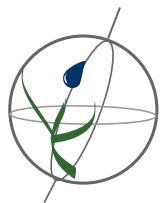


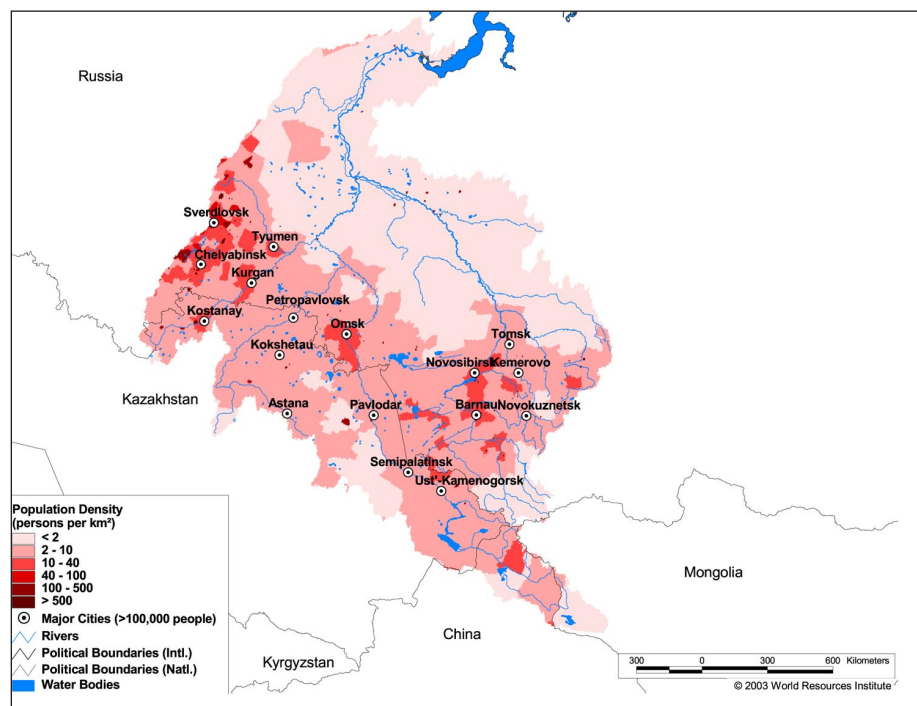
Land Cover and Use Variables

Percent Forest Cover:	33.9
Percent Grassland, Savanna and Shrubland:	16.0
Percent Wetlands:	11.2
Percent Cropland:	36.9
Percent Irrigated Cropland:	0.5
Percent Dryland Area:	63.9
Percent Urban and Industrial Area:	3.0
Percent Loss of Original Forest Cover:	38.4



Basin Indicators

Basin Area (sq. km):	2,972,493
Average Population Density (people per sq. km):	10
Number of Large Cities (>100,000 people):	17
Water Supply per Person (1995)(m ³ /year):	14,937
Degree of River Fragmentation:	Medium
Number of Dams (>15m high) in Basin:	-
Number of Dams (>150m high) in Basin:	-
Number of Dams (>60m high) under Construction:	0
Number of Dams (>15m high) on Main Stem of River:	1
Number of Dams (>150m high) on Main Stem of River:	0



Biodiversity Information and Indicators

Number of Fish Species:	43
Number of Fish Endemics:	0
Number of Amphibian Species:	-
Number of Ramsar Sites:	6
Number of Wetland-Dependent IBAs:	-
Number of Endemic Bird Areas:	0
Percent Protected Area:	1.9

