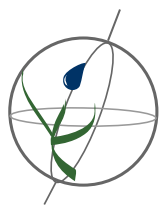
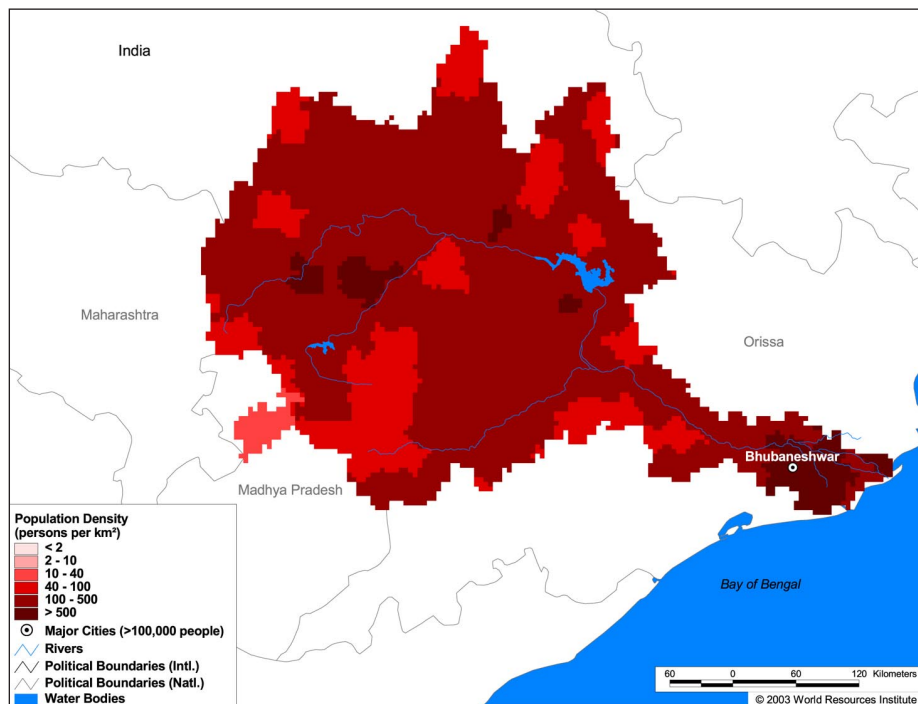


Land Cover and Use Variables

Percent Forest Cover:	8.1
Percent Grassland, Savanna and Shrubland:	26.7
Percent Wetlands:	0.2
Percent Cropland:	59.5
Percent Irrigated Cropland:	17.4
Percent Dryland Area:	17.3
Percent Urban and Industrial Area:	4.9
Percent Loss of Original Forest Cover:	79.4

**Basin Indicators**

Basin Area (sq. km):	145,816
Average Population Density (people per sq. km):	201
Number of Large Cities (>100,000 people):	1
Water Supply per Person (1995)(m ³ /year):	2,171
Degree of River Fragmentation:	-
Number of Dams (>15m high) in Basin:	10
Number of Dams (>150m high) in Basin:	0
Number of Dams (>60m high) under Construction:	1
Number of Dams (>15m high) on Main Stem of River:	4
Number of Dams (>150m high) on Main Stem of River:	0

**Biodiversity Information and Indicators**

Number of Fish Species:	-
Number of Fish Endemics:	-
Number of Amphibian Species:	22
Number of Ramsar Sites:	0
Number of Wetland-Dependent IBAs:	-
Number of Endemic Bird Areas:	0
Percent Protected Area:	3.6

