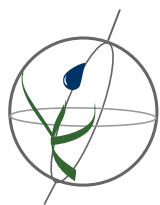


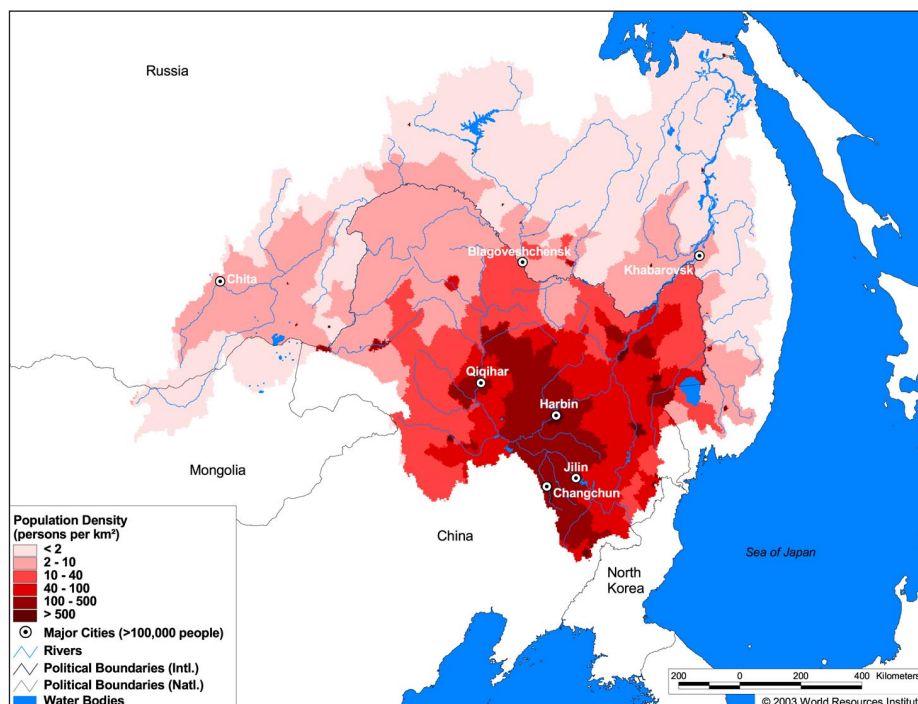
Land Cover and Use Variables

Percent Forest Cover:	53.8
Percent Grassland, Savanna and Shrubland:	8.8
Percent Wetlands:	4.4
Percent Cropland:	18.4
Percent Irrigated Cropland:	0.8
Percent Dryland Area:	34.2
Percent Urban and Industrial Area:	2.6
Percent Loss of Original Forest Cover:	33.4



Basin Indicators

Basin Area (sq. km):	1,929,955
Average Population Density (people per sq. km):	33
Number of Large Cities (>100,000 people):	7
Water Supply per Person (1995)(m ³ /year):	4,917
Degree of River Fragmentation:	Medium
Number of Dams (>15m high) in Basin:	14
Number of Dams (>150m high) in Basin:	0
Number of Dams (>60m high) under Construction:	4
Number of Dams (>15m high) on Main Stem of River:	-
Number of Dams (>150m high) on Main Stem of River:	-



Biodiversity Information and Indicators

Number of Fish Species:	120
Number of Fish Endemics:	6
Number of Amphibian Species:	14
Number of Ramsar Sites:	11
Number of Wetland-Dependent IBAs:	-
Number of Endemic Bird Areas:	0
Percent Protected Area:	1.6

