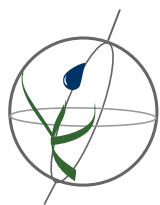
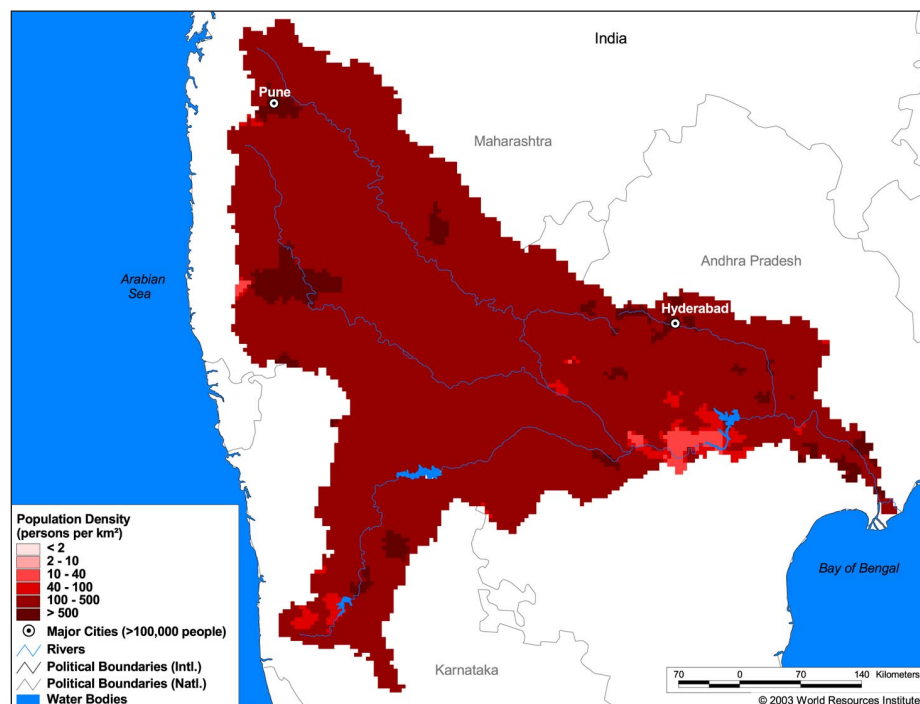


Land Cover and Use Variables

Percent Forest Cover:	2.8
Percent Grassland, Savanna and Shrubland:	22.7
Percent Wetlands:	16.2
Percent Cropland:	66.4
Percent Irrigated Cropland:	16.2
Percent Dryland Area:	61.2
Percent Urban and Industrial Area:	8.8
Percent Loss of Original Forest Cover:	80.2

**Basin Indicators**

Basin Area (sq. km):	226,037
Average Population Density (people per sq. km):	265
Number of Large Cities (>100,000 people):	2
Water Supply per Person (1995)(m ³ /year):	786
Degree of River Fragmentation:	-
Number of Dams (>15m high) in Basin:	28
Number of Dams (>150m high) in Basin:	0
Number of Dams (>60m high) under Construction:	2
Number of Dams (>15m high) on Main Stem of River:	8
Number of Dams (>150m high) on Main Stem of River:	0

**Biodiversity Information and Indicators**

Number of Fish Species:	-
Number of Fish Endemics:	-
Number of Amphibian Species:	58
Number of Ramsar Sites:	0
Number of Wetland-Dependent IBAs:	-
Number of Endemic Bird Areas:	1
Percent Protected Area:	4.2

