

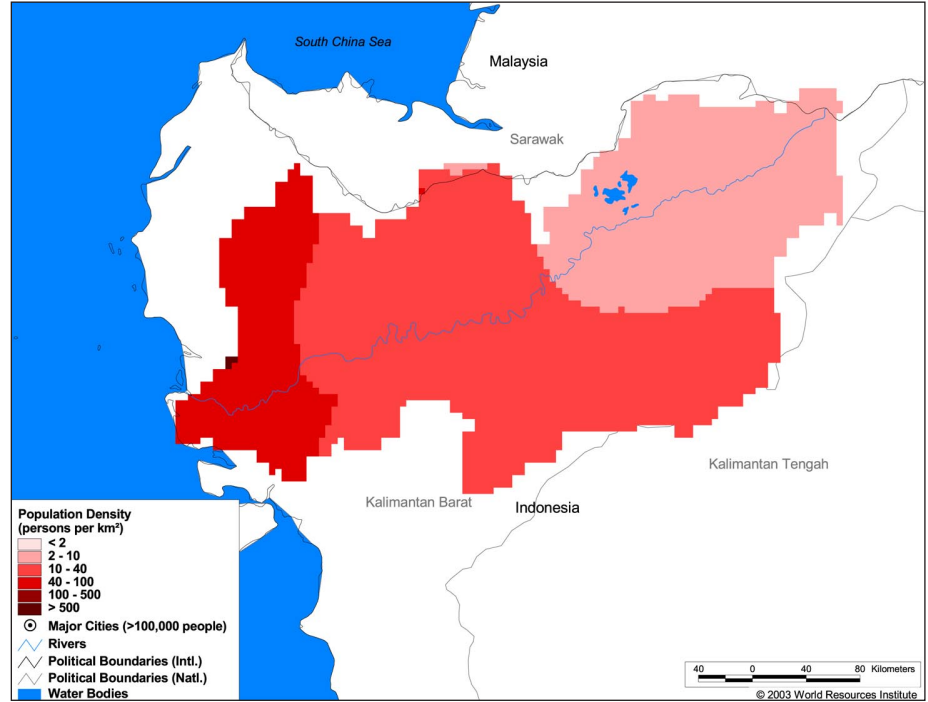
Land Cover and Use Variables

Percent Forest Cover:	64.8
Percent Grassland, Savanna and Shrubland:	0.2
Percent Wetlands:	1.7
Percent Cropland:	33.2
Percent Irrigated Cropland:	0.0
Percent Dryland Area:	0.0
Percent Urban and Industrial Area:	0.3
Percent Loss of Original Forest Cover:	46.5



Basin Indicators

Basin Area (sq. km):	88,781
Average Population Density (people per sq. km):	20
Number of Large Cities (>100,000 people):	0
Water Supply per Person (1995)(m ³ /year):	105,159
Degree of River Fragmentation:	-
Number of Dams (>15m high) in Basin:	0
Number of Dams (>150m high) in Basin:	0
Number of Dams (>60m high) under Construction:	0
Number of Dams (>15m high) on Main Stem of River:	0
Number of Dams (>150m high) on Main Stem of River:	0



Biodiversity Information and Indicators

Number of Fish Species:	320
Number of Fish Endemics:	35
Number of Amphibian Species:	84
Number of Ramsar Sites:	1
Number of Wetland-Dependent IBAs:	-
Number of Endemic Bird Areas:	1
Percent Protected Area:	5.9

